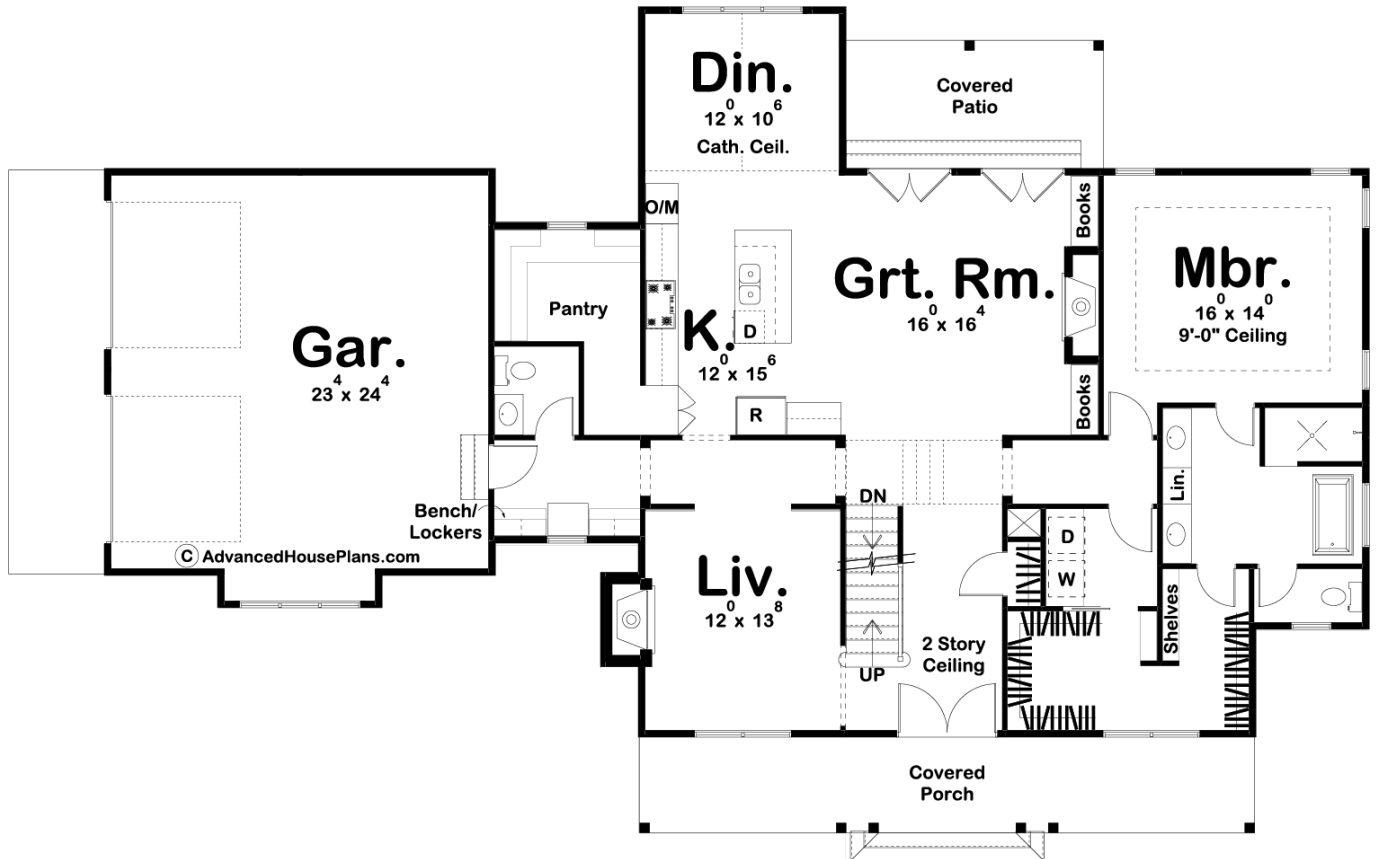
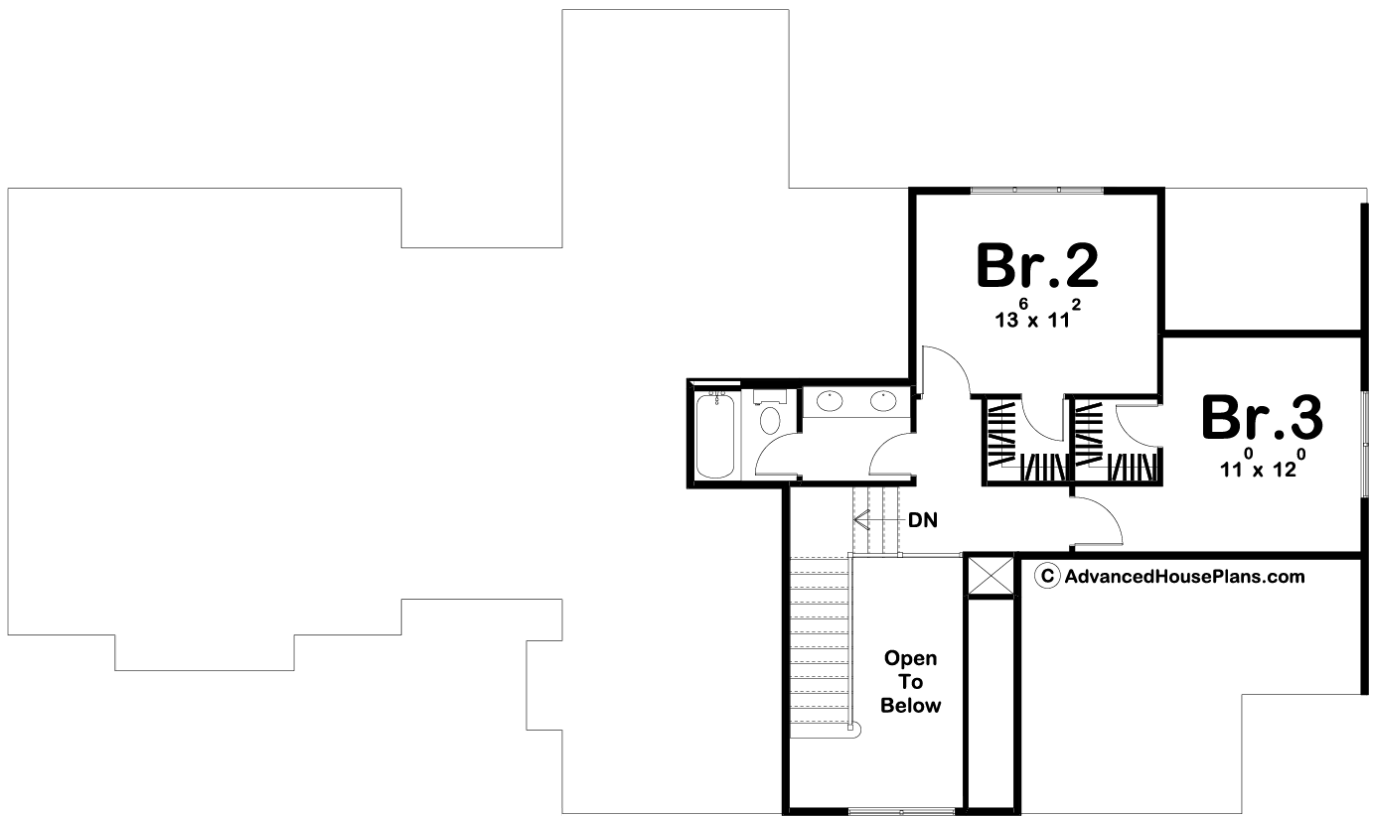




29643 - Wrigley Farms Data Sheet

2334 SQ FT	3 BEDS	3 BATHS	2 BAYS	84' 0" WIDE	51' 0" DEEP
---------------	-----------	------------	-----------	----------------	----------------





Construction Specs

Layout

Bedrooms	3
Bathrooms	3
Garage Bays	2

Square Footage

Main Level	1809 Sq. Ft.
Second Level	525 Sq. Ft.
Garage	566 Sq. Ft.
Total Finished Area	2334 Sq. Ft.

Exterior Dimensions

Width	84' 0"
Depth	51' 0"
Ridge Height	31' 0"
<i>Calculated from main floor line</i>	

Default Construction Stats

Stats are unique to the individual plan.

Foundation Type	Basement
Exterior Wall Construction	2x4
Roof Pitches	12/12 Primary, 6/12 Secondary
Foundation Wall Height	9'
Main Wall Height	9'
Second Wall Height	8'

Plan Description

Modern Farmhouse styling, accented by board and batten siding and a front covered porch, conveys a welcoming appearance to this efficiently designed, 1.5-story home plan. Entry through the front covered porch reveals an open living room that is warmed by a fireplace. Further, into the house, you will find an open arrangement of the great room, dining room, and kitchen. The great room is warmed by a fireplace that is flanked by built-in bookshelves and brightened by double doors that lead to the covered patio. The kitchen itself includes a breakfast island and a large walk-in pantry. The main-floor master suite is entered through an entry cove and features a 9-foot-high boxed ceiling. Its bath area features his and her vanities, walk-in shower, compartmented toilet and a walk-in closet that accesses the laundry room. On the second level, two bedrooms each enjoy their own walk-in closets and share a conveniently located bathroom. As always any Advanced House Plans home plan can be customized to fit your needs with our alteration department. Whether you need to add another garage stall, change the front elevation, stretch the home larger or just make the home plan more affordable for your budget we can do that and more for you at Ahp.