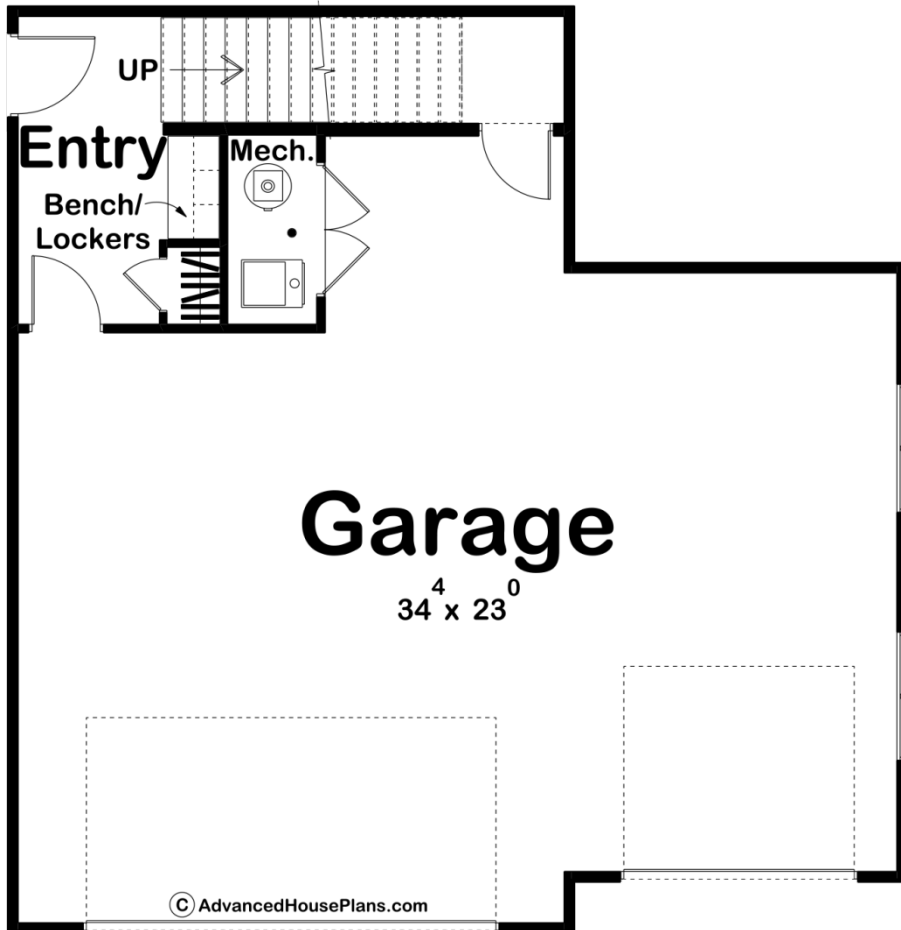
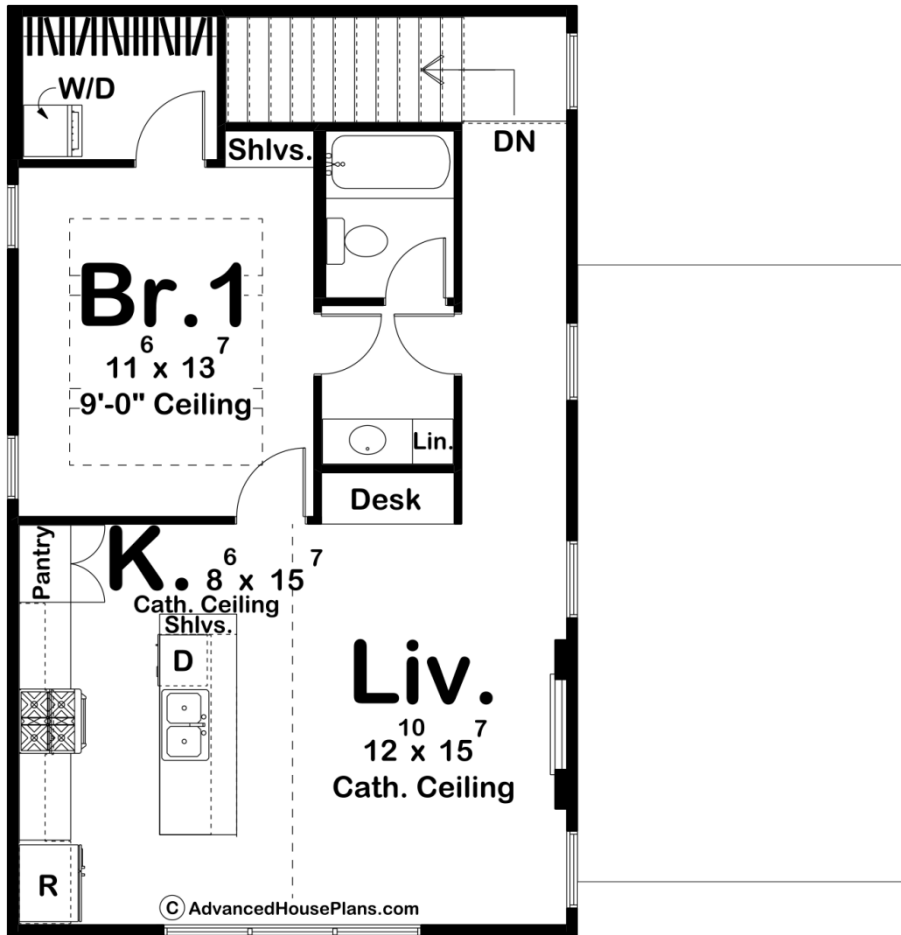




30269 - Wood River Data Sheet

912 SQ FT	1 BEDS	1 BATHS	3 BAYS	35' 0" WIDE	36' 0" DEEP
--------------	-----------	------------	-----------	----------------	----------------





Construction Specs

Layout

Bedrooms	1
Bathrooms	1
Garage Bays	3

Square Footage

Main Level	175 Sq. Ft.
Second Level	737 Sq. Ft.
Garage	899 Sq. Ft.
Total Finished Area	912 Sq. Ft.

Exterior Dimensions

Width	35' 0"
Depth	36' 0"

Default Construction Stats

Stats are unique to the individual plan.

Foundation Type	Slab
-----------------	------

Exterior Wall Construction	2x4
Roof Pitches	Primary 12/12, Secondary 4/12, 6/12
Main Wall Height	9'
Second Wall Height	8'

Plan Description

The Wood River plan is a gorgeous modern farmhouse style carriage house plan, perfect for a young couple, empty nesters, or even someone looking to build on their own. With a beautiful white exterior and a mix of textures including stucco and vinyl siding, wood and dark accents, and a gorgeous pitched roof, this home would fit well into any neighborhood. The three-car garage allows for plenty of space for cars, storage, an at-home gym, workshop, or anything desired. You can be welcomed in the garage by a gorgeous entryway and additional storage area under the stairs. Head upstairs to find the living quarters. A lengthy hallway into the living room allows for the space to feel bigger than it is. An open concept kitchen and living room area with a large kitchen island makes this space perfect for entertaining. Just off the kitchen is where you can find the bedroom with a walk-in closet and laundry unit inside. The Hollywood bathroom is shared with the occupants and any guests as it is a hallway bath, with an entrance from either side of the hallway.