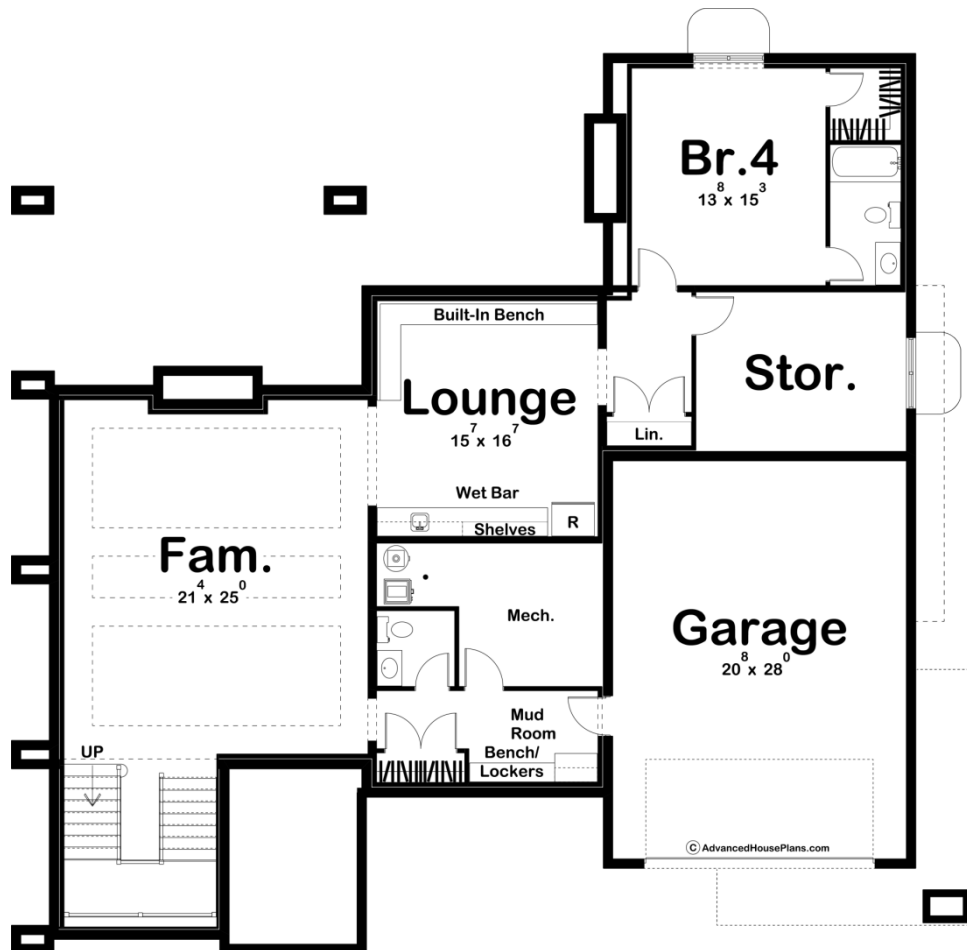
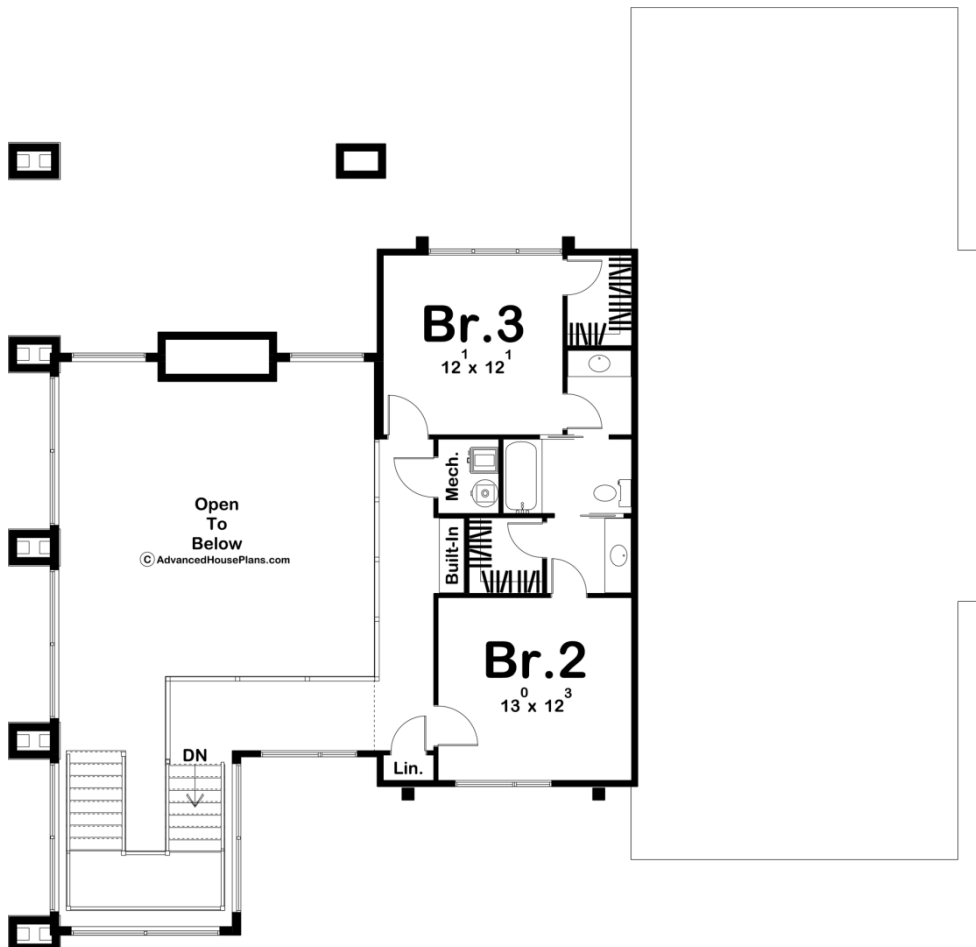
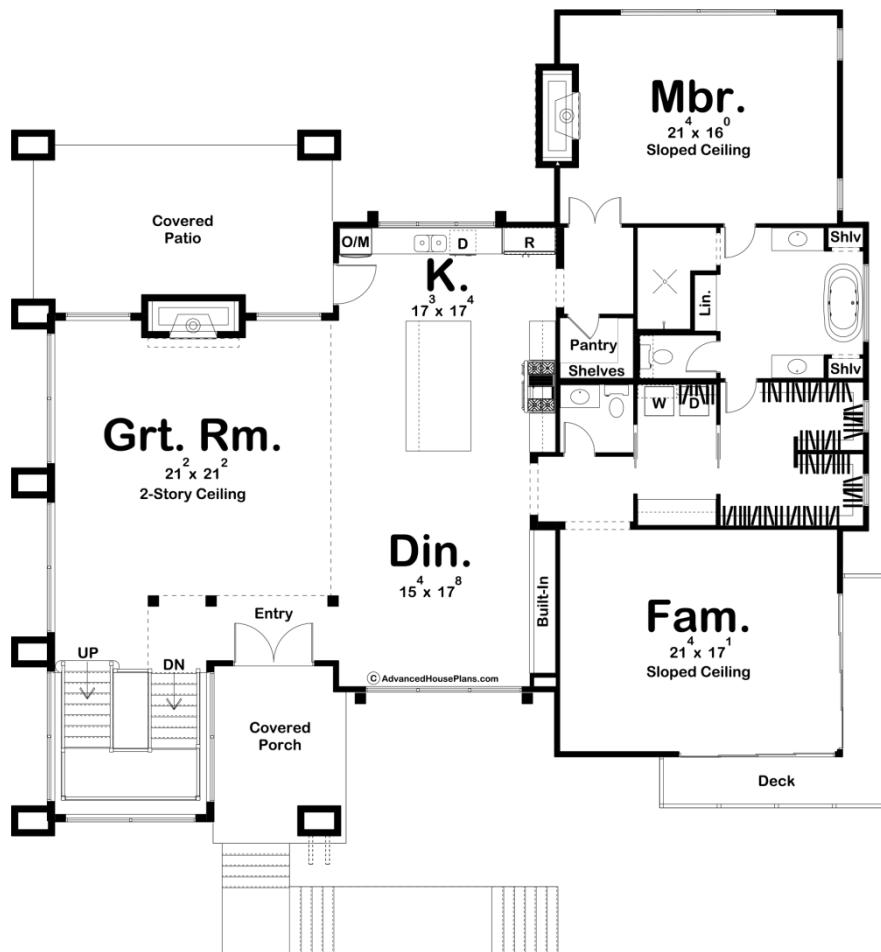




29931 - Winter Park Data Sheet

4718 SQ FT	4 BEDS	5 BATHS	2 BAYS	67' 8" WIDE	63' 4" DEEP
---------------	-----------	------------	-----------	----------------	----------------





Construction Specs

Layout	
Bedrooms	4
Bathrooms	5
Garage Bays	2
Square Footage	
Main Level	2641 Sq. Ft.
Second Level	684 Sq. Ft.
Basement Level	1393 Sq. Ft.
Garage	645 Sq. Ft.
Total Finished Area	4718 Sq. Ft.
Exterior Dimensions	
Width	67' 8"
Depth	63' 4"
Default Construction Stats	
<i>Stats are unique to the individual plan.</i>	
Foundation Type	Basement
Exterior Wall Construction	2x4
Roof Pitches	2/12 Primary
Foundation Wall Height	9'
Main Wall Height	10'
Second Wall Height	9'

## Plan Description

The Winter Park plan is an extravagant modern mountain plan. Single sloped rooflines, cedar siding, and an abundance of windows create a magnificent curb appeal. On the lower level of the home, you'll find a family room with a decorative ceiling. Adjacent to the family room is a lounge with a wet bar and a built-in bench. A bedroom, bathroom and a storage area are also located on this level. Just up the stairs, the main level features a great room with a 2 story ceiling. Large windows surround the great room allowing you to take in the panoramic views. The kitchen, dining room, and great room flow seamlessly in an open layout. The kitchen includes a large island and a walk-in pantry. A family room has large sliding doors that lead out to a deck. The master suite includes his/her vanities, an enclosed toilet area, and a large walk-in closet with access to the home's laundry room. The second level includes 2 additional bedrooms and a bathroom.