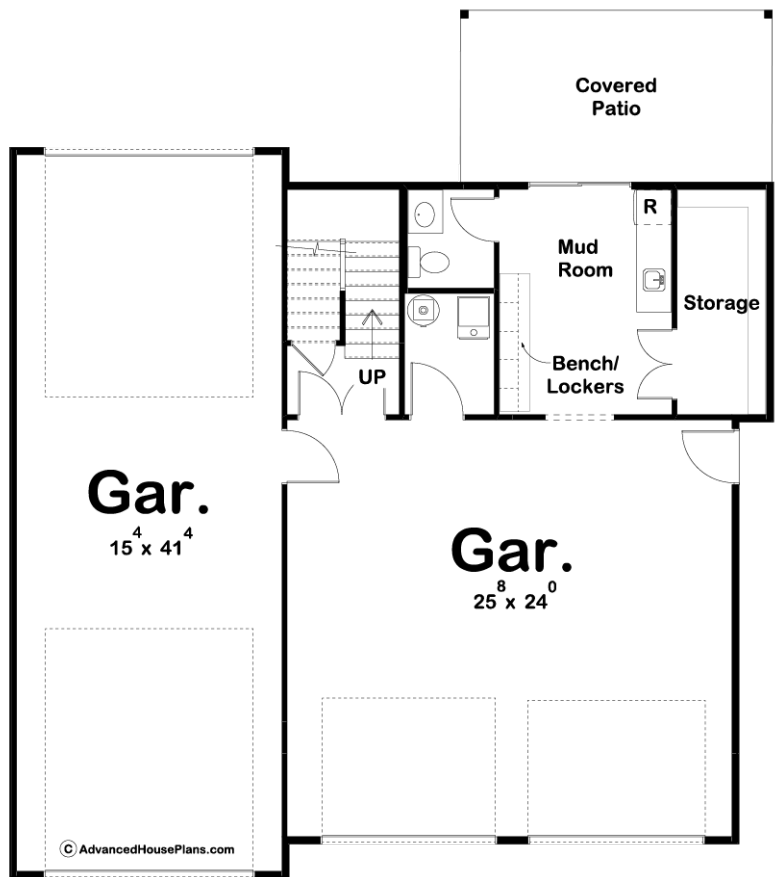
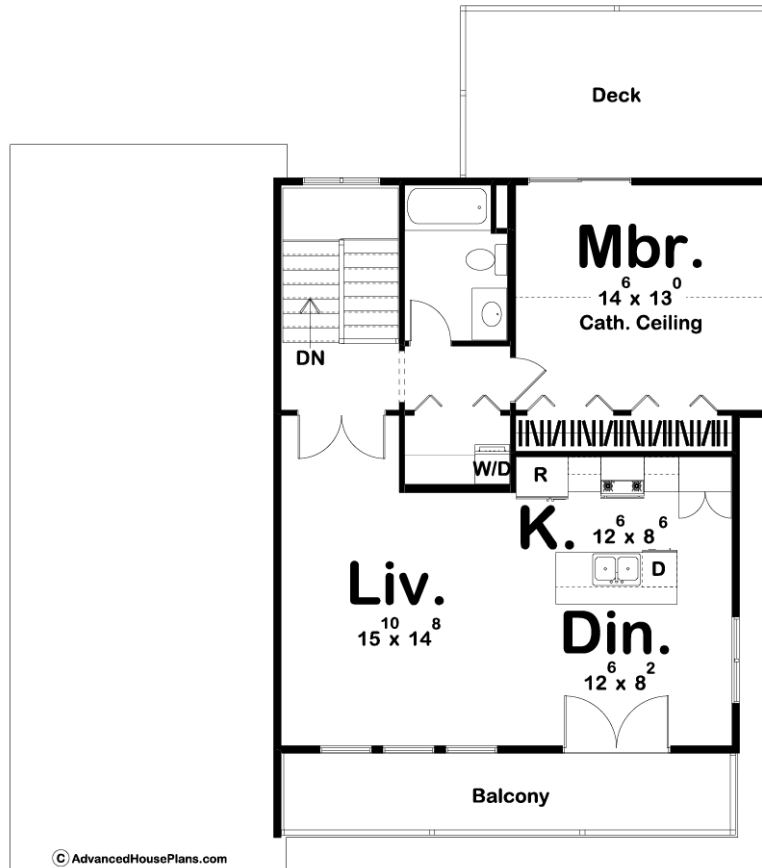




### 29733 - Windsor Data Sheet

1144 SQ FT	1 BEDS	2 BATHS	3 BAYS	44' 0" WIDE	50' 0" DEEP
---------------	-----------	------------	-----------	----------------	----------------





## Construction Specs

### Layout

Bedrooms	1
Bathrooms	2
Garage Bays	3

### Square Footage

Main Level	295 Sq. Ft.
Second Level	849 Sq. Ft.
Garage	1310 Sq. Ft.
Total Finished Area	1144 Sq. Ft.

### Exterior Dimensions

Width	44' 0"
Depth	50' 0"

### Default Construction Stats

*Stats are unique to the individual plan.*

Foundation Type	Slab
-----------------	------

Exterior Wall Construction	2x4
Roof Pitches	6/12 Primary, 10/12 Secondary
Main Wall Height	9'
Second Wall Height	9'

## Plan Description

Whether you are looking for a guest house or a place to park your RV, the Windsor is the perfect plan for you. The craftsman exterior gives this apartment garage a rustic feel. On the main level, you'll find a 2 car garage and a pull through RV garage. Also on the main floor is a wet bar that has a bench and lockers for storage. On the upper level of this garage, you will find an efficient apartment that has a full kitchen. The kitchen includes an island with a flush snack bar. Enjoy your outdoor space with a large balcony off of the front of the apartment.