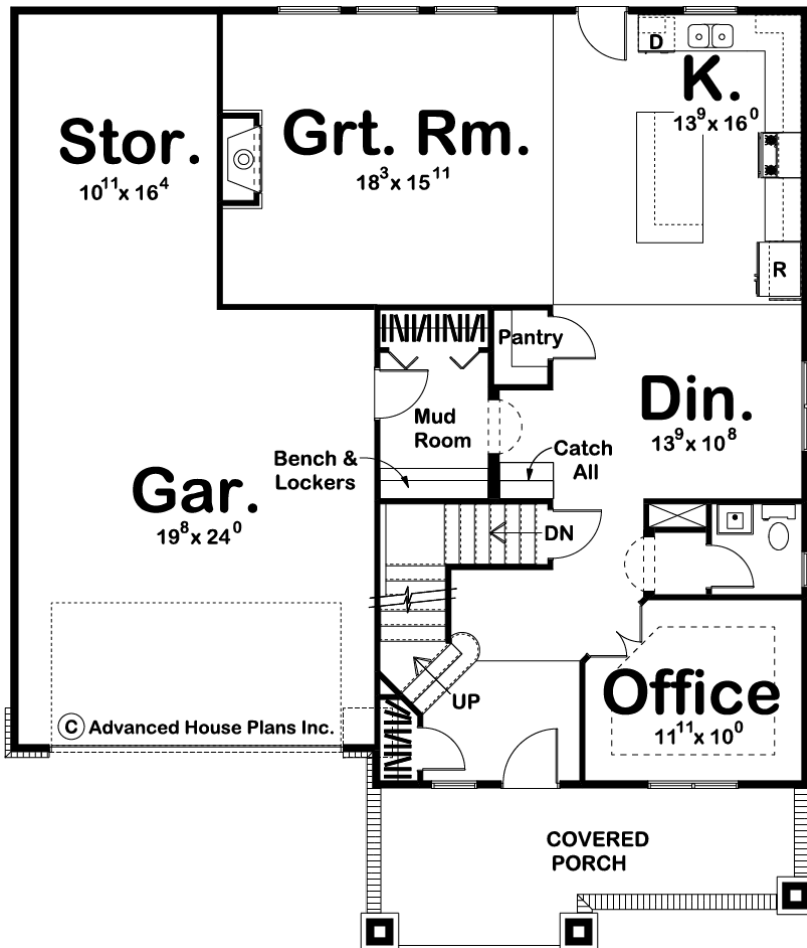
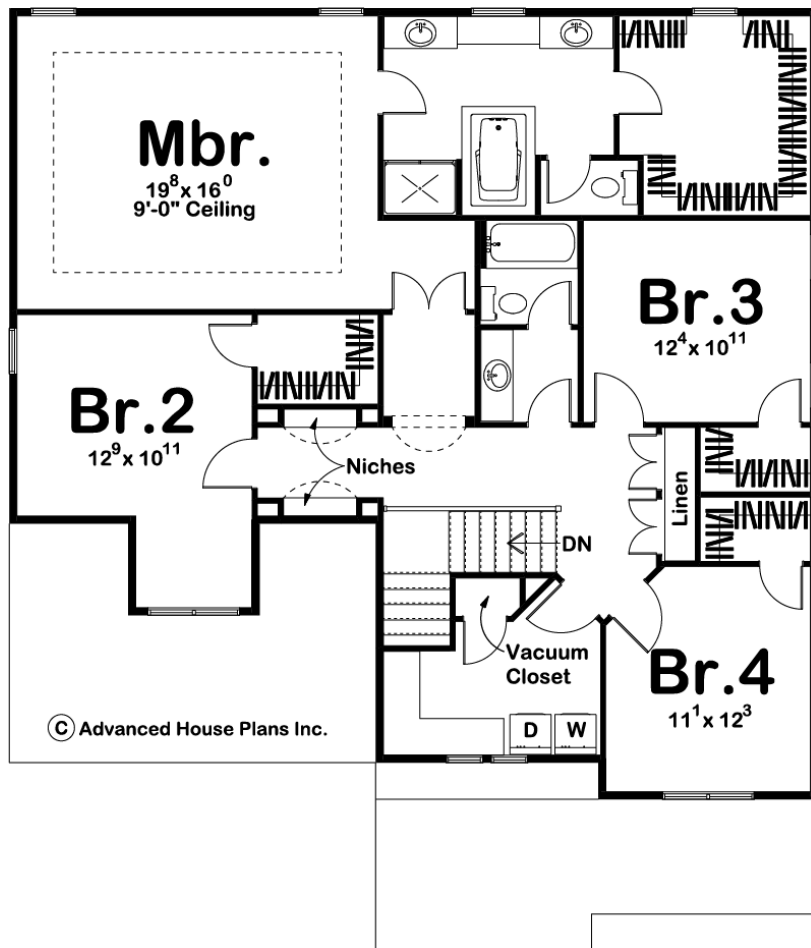




**29300 - Windrush Data Sheet**

2732 SQ FT	4 BEDS	3 BATHS	2 BAYS	44' 0" WIDE	52' 0" DEEP
---------------	-----------	------------	-----------	----------------	----------------





## Construction Specs

### Layout

Bedrooms	4
Bathrooms	3
Garage Bays	2

### Square Footage

Main Level	1176 Sq. Ft.
Second Level	1556 Sq. Ft.
Garage	677 Sq. Ft.
Total Finished Area	2732 Sq. Ft.

### Exterior Dimensions

Width	44' 0"
Depth	52' 0"
Ridge Height	34' 0"
<i>Calculated from main floor line</i>	

## Default Construction Stats

*Stats are unique to the individual plan.*

Foundation Type	Basement
Exterior Wall Construction	2x4
Roof Pitches	8/12 Primary, 12/12 Secondary
Foundation Wall Height	9'
Main Wall Height	9'
Second Wall Height	8'

## Plan Description

A cluster of gables, tastefully arranged above a stout front porch, harken the sense of simpler times in this family-friendly 2-story house plan. An uncomplicated, cost-efficient foundation "footprint" enhances the design's overall appeal. Inside, the entry hall with convenient coat closet presents an adjacent office and powder bath. Farther in, the dining area uniquely accesses a walk-in pantry and handy catch-all, while maintaining an open arrangement with the island kitchen. Also open to the kitchen is the great room, with fireplace and sunny views to the outdoors. A practical mud room with bench, lockers and closet, accesses the 2-car garage that is extended with a generous storage area to the rear. Upstairs, a sprawling master suite includes a pampering bath area with his-and-her vanities, soaking tub, shower, compartmented toilet and large walk-in closet with window. All secondary bedrooms have walk-in closets and share a central hall bath. The second-level landing and hallway features display niches and a sizeable linen closet. A laundry room, with ample counter space and a vacuum closet, conveniently serves all bedrooms.