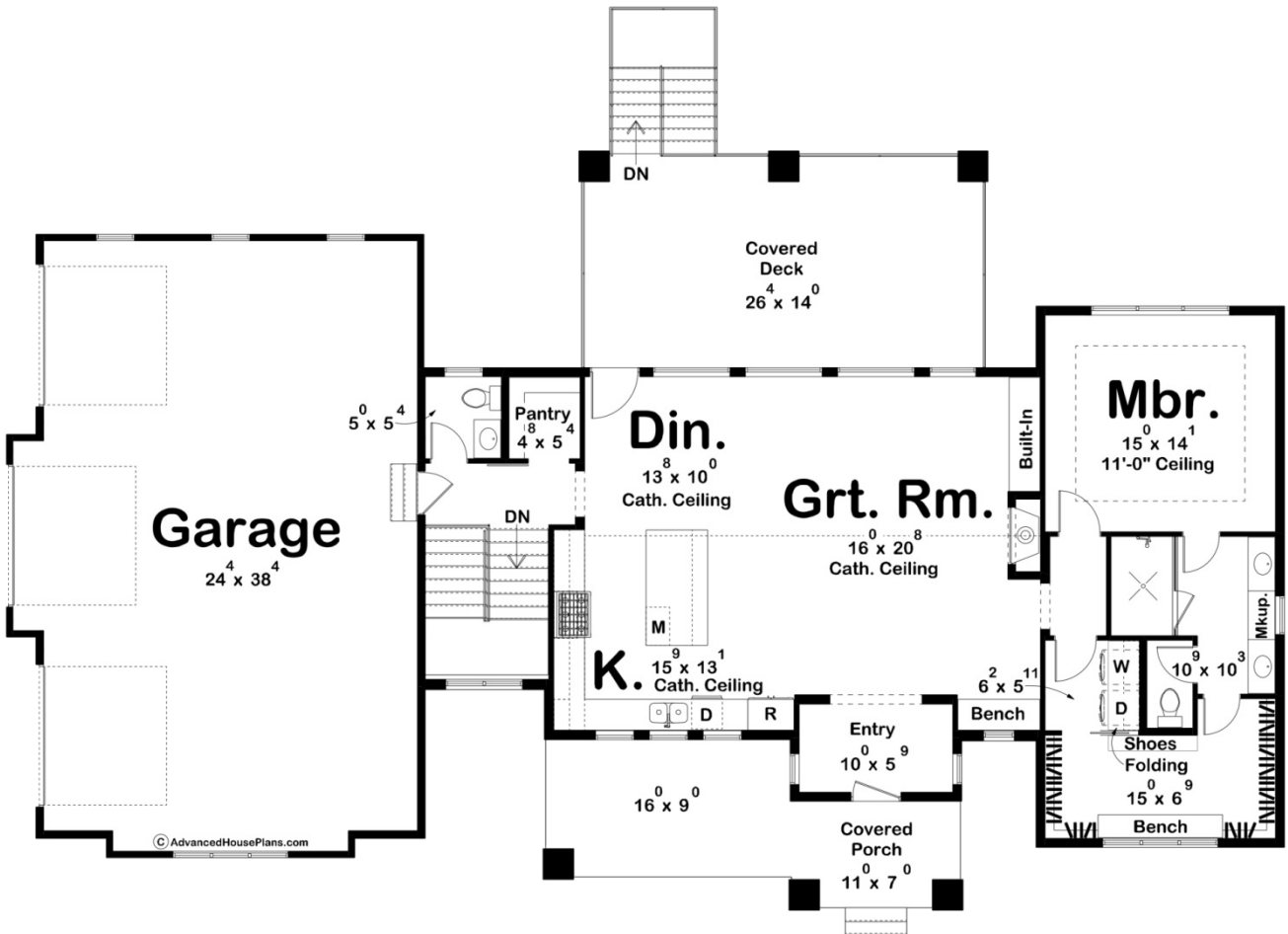
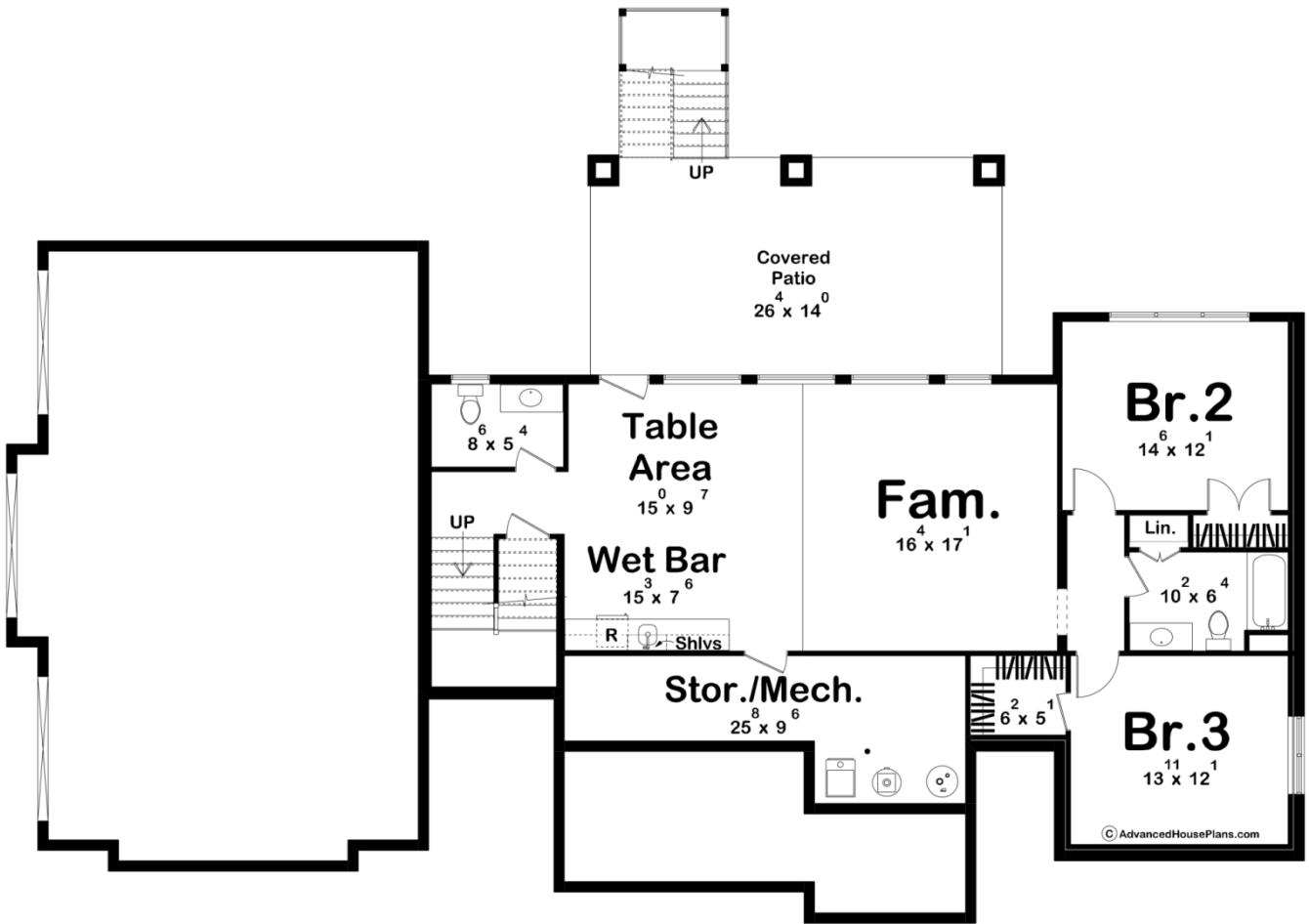




**30451 - Whistling Lake Data Sheet**

1545 SQ FT	1 BEDS	2 BATHS	3 BAYS	83' 0" WIDE	58' 6" DEEP
---------------	-----------	------------	-----------	----------------	----------------





## Construction Specs

### Layout

Bedrooms	1
Bathrooms	2
Garage Bays	3

### Square Footage

Main Level	1545 Sq. Ft.
Covered Area	589 Sq. Ft.
Garage	1014 Sq. Ft.
Total Finished Area	1545 Sq. Ft.

### Exterior Dimensions

Width	83' 0"
Depth	58' 6"

### Default Construction Stats

*Stats are unique to the individual plan.*

Foundation Type	Walkout
-----------------	---------

Exterior Wall Construction	2x4
Roof Pitches	Primary 10/12, Secondary 8/12
Foundation Wall Height	9'
Main Wall Height	10'

## Plan Description

Introducing the Whistling Lake, our newest Beach-Lake Style House Plan. This charming 1-story walkout house features a welcoming facade with a cozy covered porch and a 3-car garage discreetly tucked away on the side. Upon entering, you'll find a dedicated entryway that opens up into an expansive open-concept space, encompassing the great room, kitchen, and dining area. The main floor includes one bedroom and two bathrooms, with the master bedroom boasting an ensuite bathroom and a walk-in closet. Downstairs, the home offers an additional 1,203 sq. ft. of living space, which includes two more bedrooms, two bathrooms, and an open-concept family room complete with a wet bar. A large storage area provides ample space for keeping belongings organized. Whistling Lake perfectly blends elegance and functionality, making it an ideal choice for those looking to enjoy the beauty of a beach or lake setting while relishing all the comforts of modern living.