

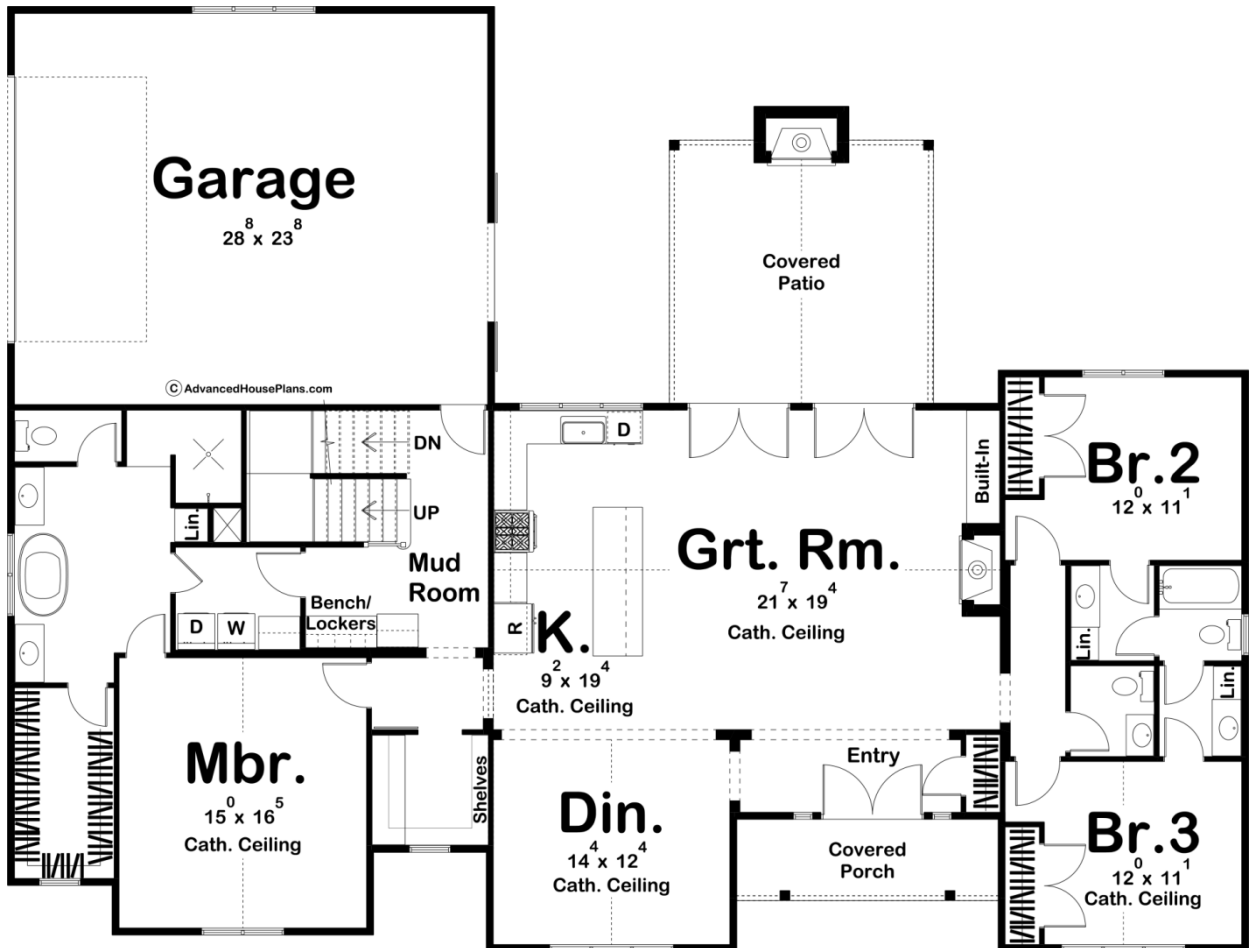
# ADVANCED

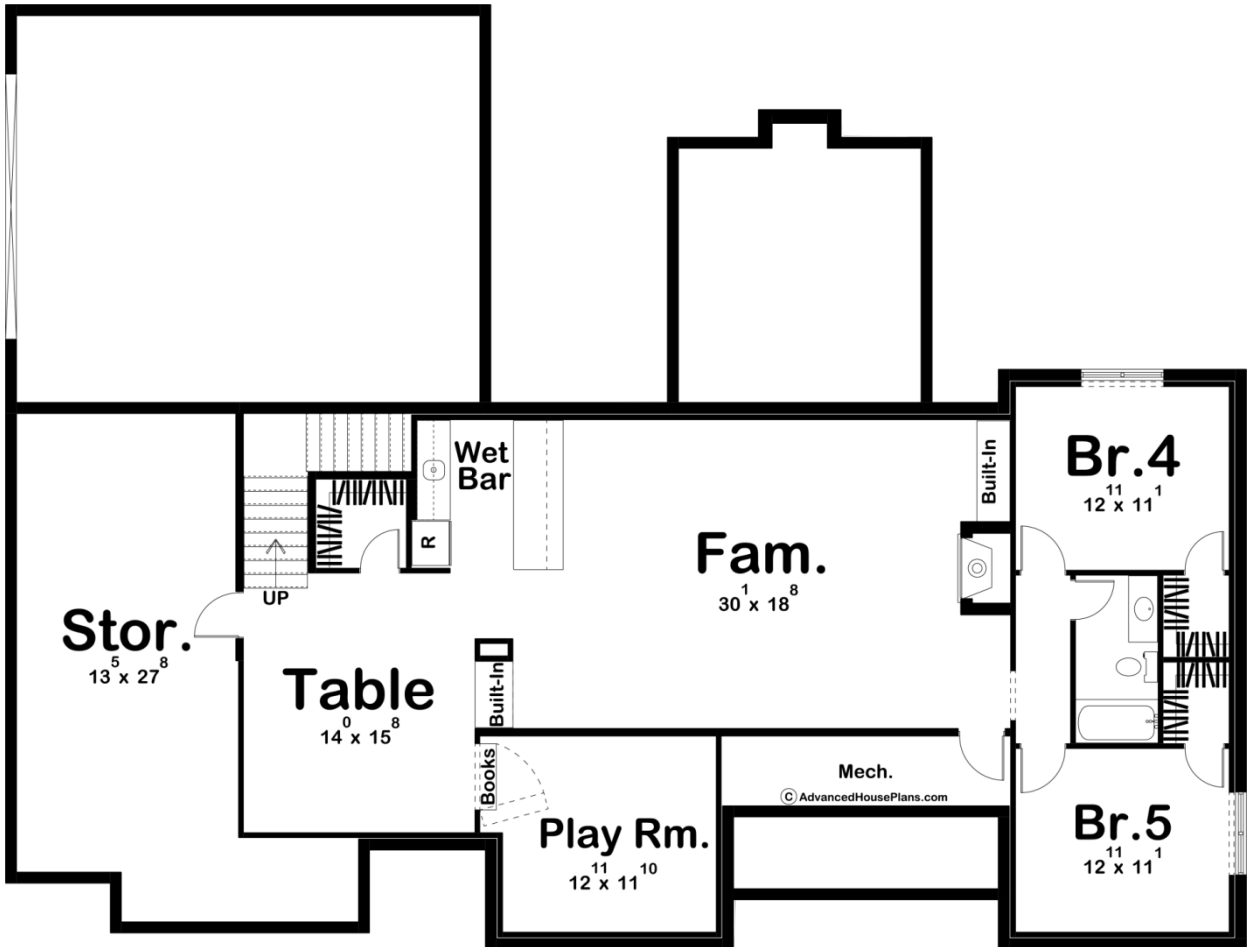
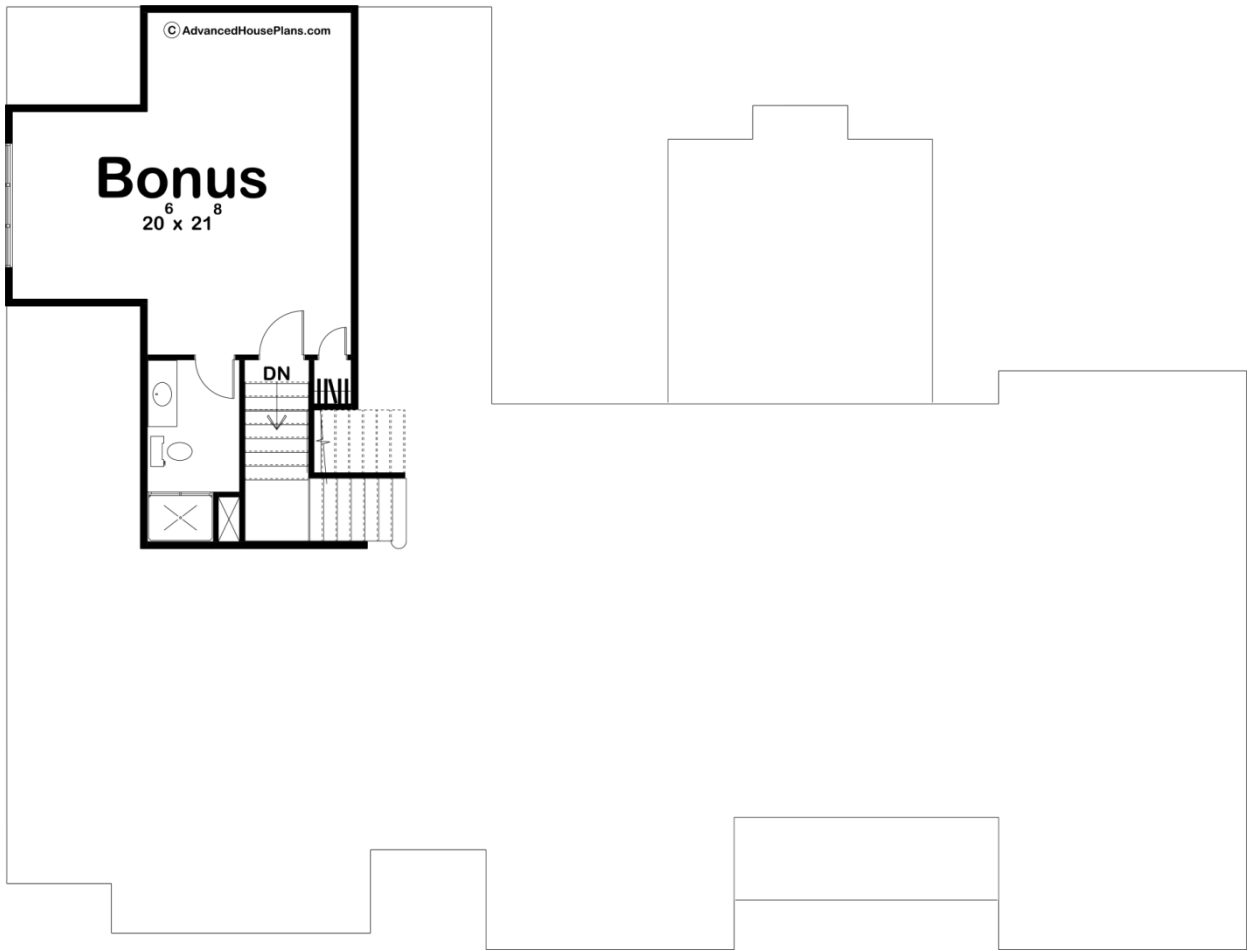
HOUSE PLANS



## 29819 - Wellwood Data Sheet

2296 SQ FT	3 BEDS	3 BATHS	2 BAYS	75' 0" WIDE	57' 0" DEEP
---------------	-----------	------------	-----------	----------------	----------------





Construction Specs

## Layout

Bedrooms	3
Bathrooms	3
Garage Bays	2

## Square Footage

Main Level	2296 Sq. Ft.
Garage	703 Sq. Ft.
Total Finished Area	2296 Sq. Ft.

## Exterior Dimensions

Width	75' 0"
Depth	57' 0"
Ridge Height <i>Calculated from main floor line</i>	22' 0"

## Default Construction Stats

*Stats are unique to the individual plan.*

Foundation Type	Basement
Exterior Wall Construction	2x4
Roof Pitches	10/12 Primary, 12/12 8/12 Secondary
Foundation Wall Height	9'
Main Wall Height	9'
Second Wall Height	8'

## Plan Description

Our Wellwood plan is a beautiful modern farmhouse ranch plan. The exterior of this home combines board and batten siding with wood accents to give it great curb appeal. Just inside the entry, you'll be blown away by the open living area. The great room lies under a soaring great room and is warmed by a fireplace with a built-in bookshelf. Double french doors lead to a covered patio with an outdoor fireplace. The kitchen includes a large island with a snack bar and a walk-in pantry. On the left side of the home, the master suite also lies under a cathedral ceiling and includes a walk-in closet, his/her vanities, and a soaking tub. There are 2 bedrooms on the right side of the home. A bonus room above the garage adds 458 sq. ft. and would make a great guest suite or a home office. An optional finished basement adds 1563 sq ft and includes a table room, a play room, 2 additional bedrooms, a wet bar and a large storage area.