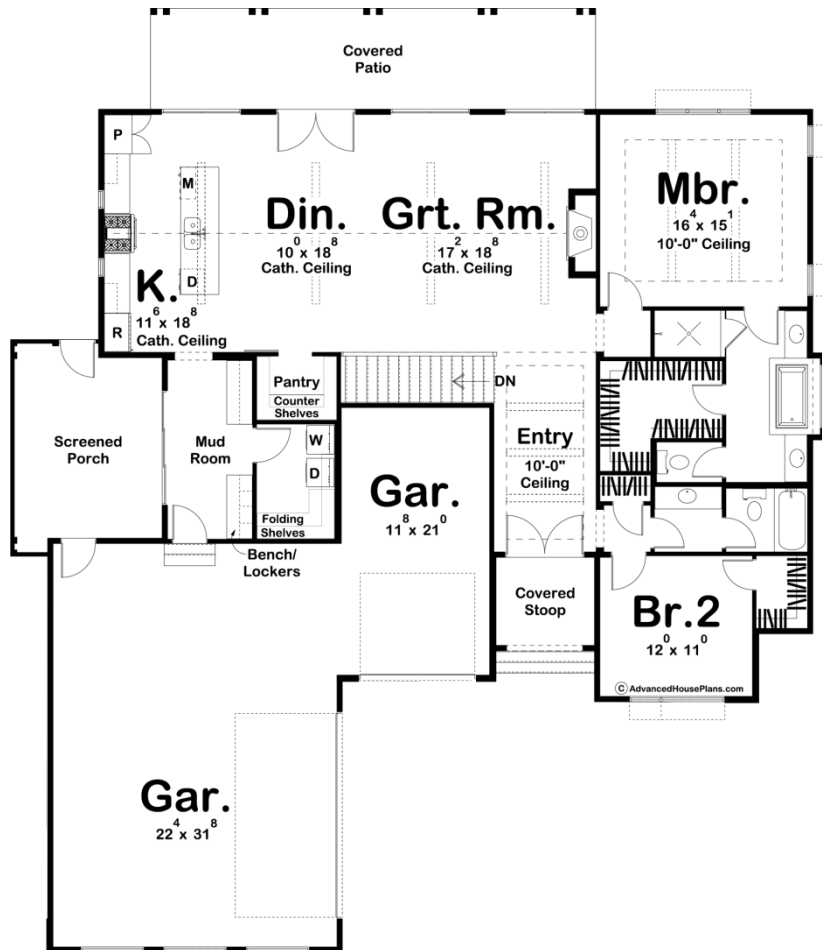




**30130 - Ventura Data Sheet**

1902 SQ FT	2 BEDS	2 BATHS	3 BAYS	64' 0" WIDE	74' 0" DEEP
---------------	-----------	------------	-----------	----------------	----------------



**Construction Specs**

Layout

Bedrooms

Bathrooms	2
-----------	---

Garage Bays	3
-------------	---

### Square Footage

Main Level	1902 Sq. Ft.
------------	--------------

Covered Area	546 Sq. Ft.
--------------	-------------

Garage	992 Sq. Ft.
--------	-------------

Total Finished Area	1902 Sq. Ft.
---------------------	--------------

### Exterior Dimensions

Width	64' 0"
-------	--------

Depth	74' 0"
-------	--------

Ridge Height	27'
<i>Calculated from main floor line</i>	

### Default Construction Stats

*Stats are unique to the individual plan.*

Foundation Type	Basement
-----------------	----------

Exterior Wall Construction	2x4
----------------------------	-----

Roof Pitches	8/12 Primary, 4/12 Secondary
--------------	------------------------------

Foundation Wall Height	9'
------------------------	----

Main Wall Height	9'
------------------	----

## Plan Description

This beautifully configured Modern House plan offers amenities that are usually found in much larger home designs. On the outside, dark gray siding with wood accents and a covered porch put on a striking display of curb appeal. Just inside, you'll be amazed at the open floor plan including a magnificent great room, which is warmed by a fireplace and flows into a dining room and large kitchen. The kitchen boasts plenty of counter space in addition to the spacious island. Just beyond the dining area, a covered patio extends entertaining options. The master suite enjoys a luxurious bath, complete with compartmented toilet, walk-in shower, dual vanities, and a large walk-in closet. On the other side of this house plan, the large 3 car garage accesses the home through a convenient mud room complete with a bench, lockers, and a catch-all.