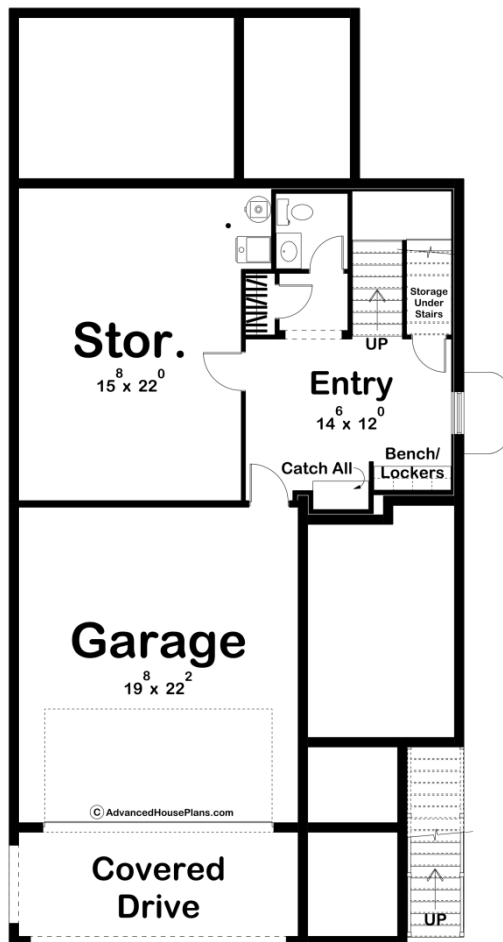
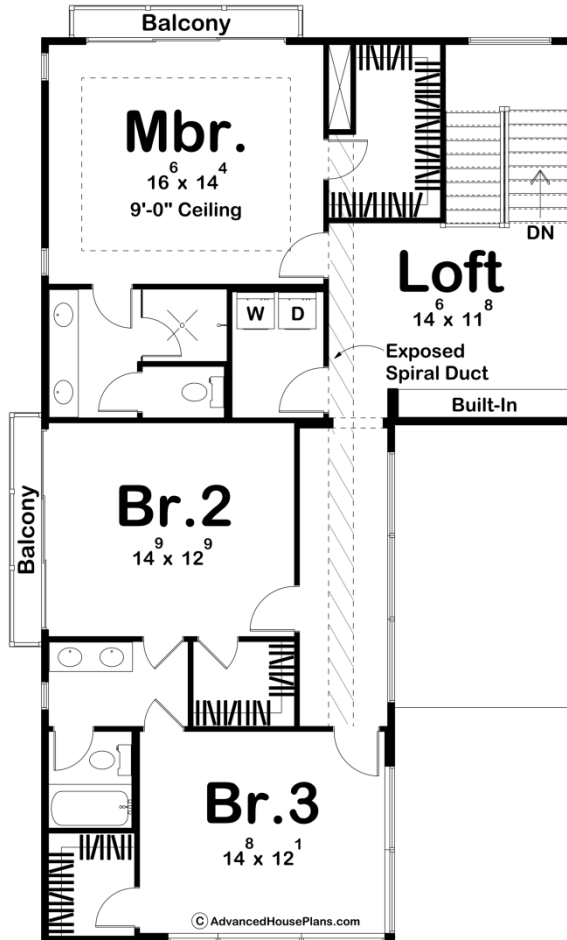
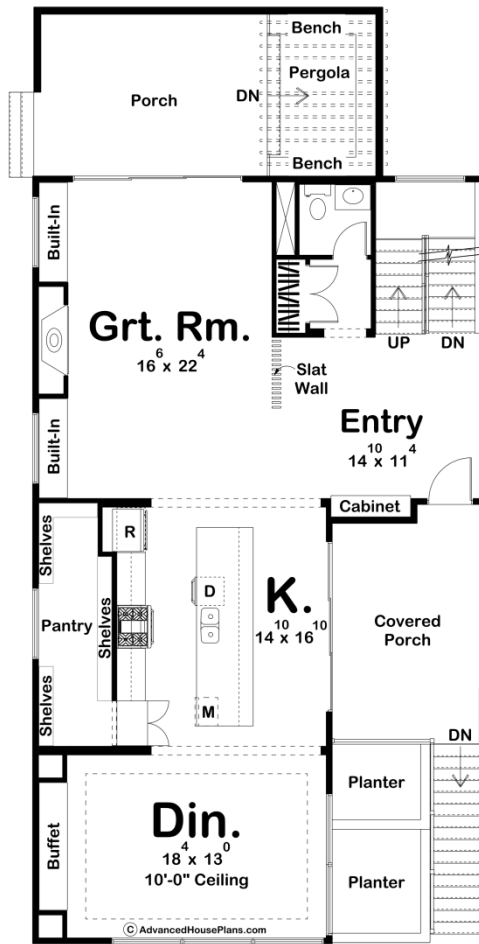




30218 - Union Square Data Sheet

2920 SQ FT	3 BEDS	4 BATHS	2 BAYS	32' 0" WIDE	66' 0" DEEP
---------------	-----------	------------	-----------	----------------	----------------





Layout

Bedrooms	3
Bathrooms	4
Garage Bays	2

Square Footage

Main Level	1388 Sq. Ft.
Second Level	1299 Sq. Ft.
Basement Level	233 Sq. Ft.
Covered Area	175 Sq. Ft.
Garage	437 Sq. Ft.
Total Finished Area	2920 Sq. Ft.

Exterior Dimensions

Width	32' 0"
Depth	66' 0"
Ridge Height <i>Calculated from main floor line</i>	25' 7"

Default Construction Stats

Stats are unique to the individual plan.

Foundation Type	Basement
Exterior Wall Construction	2x4
Roof Pitches	Flat
Foundation Wall Height	10'
Main Wall Height	10'
Second Wall Height	9'

Plan Description

The Union Square plan is a cozy modern style house plan that is perfect from coast to coast. As soon as you enter the property, you're greeted with gorgeous views and a beautifully structured entryway. A bench and lockers acts as a mudroom as well as a catch all after walking in from the garage, but with it being on the foundation level, any messes here are unnoticeable to guests. Take a walk up the stairs to experience the main level of this plan. Complete with an open floor plan, the kitchen, great room, and dining room on this level make it a great space for entertaining while not disturbing those who may be in bedrooms. A large walk-in pantry can be found behind the kitchen, as well as built-in shelves in the great, allowing the plan to have the maximum amount of space. The second level of the Union Square plan is complete with three bedrooms, the master, as well as two additional bedrooms, all with walk-in closets. Both bedrooms share a bathroom, while the master suite has a large walk-in, with two vanities. Two

balconies on this level, in the master suite and bedroom two, as well as a loft in the center create a fun area for families to unwind at the end of the day yet enjoy privacy or quiet time.