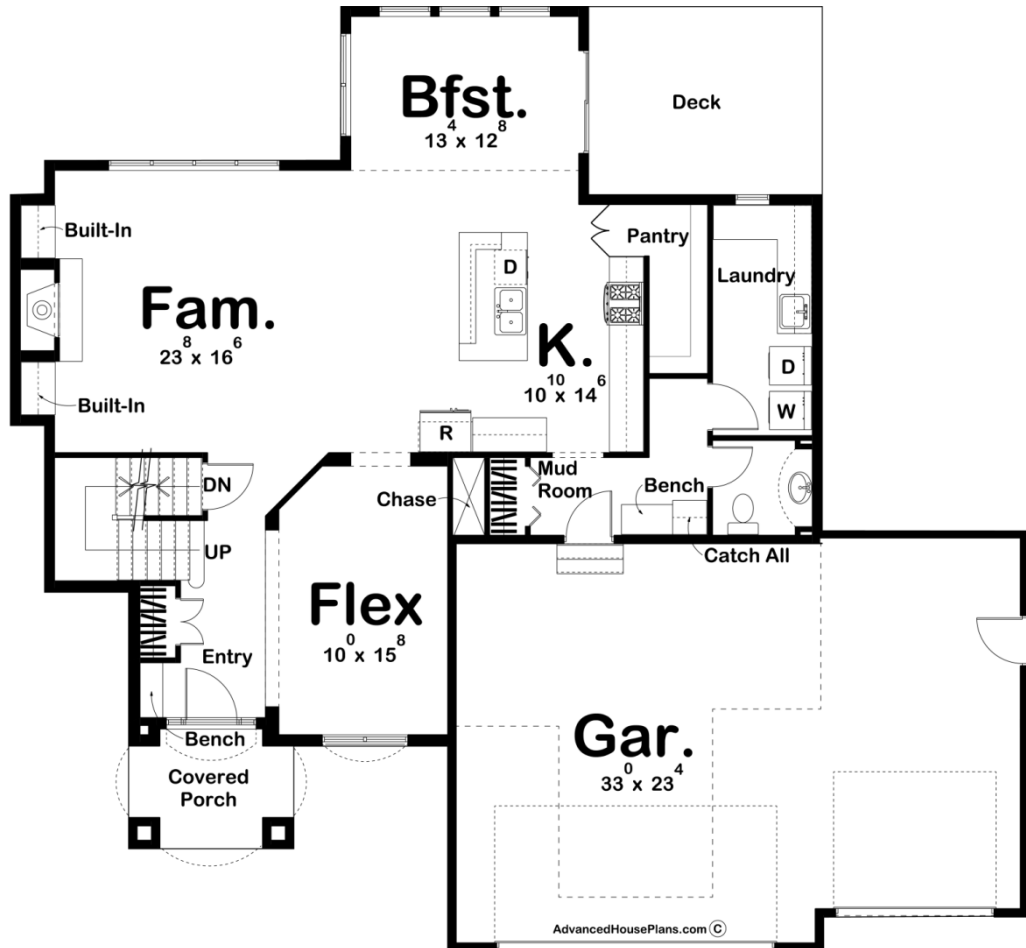
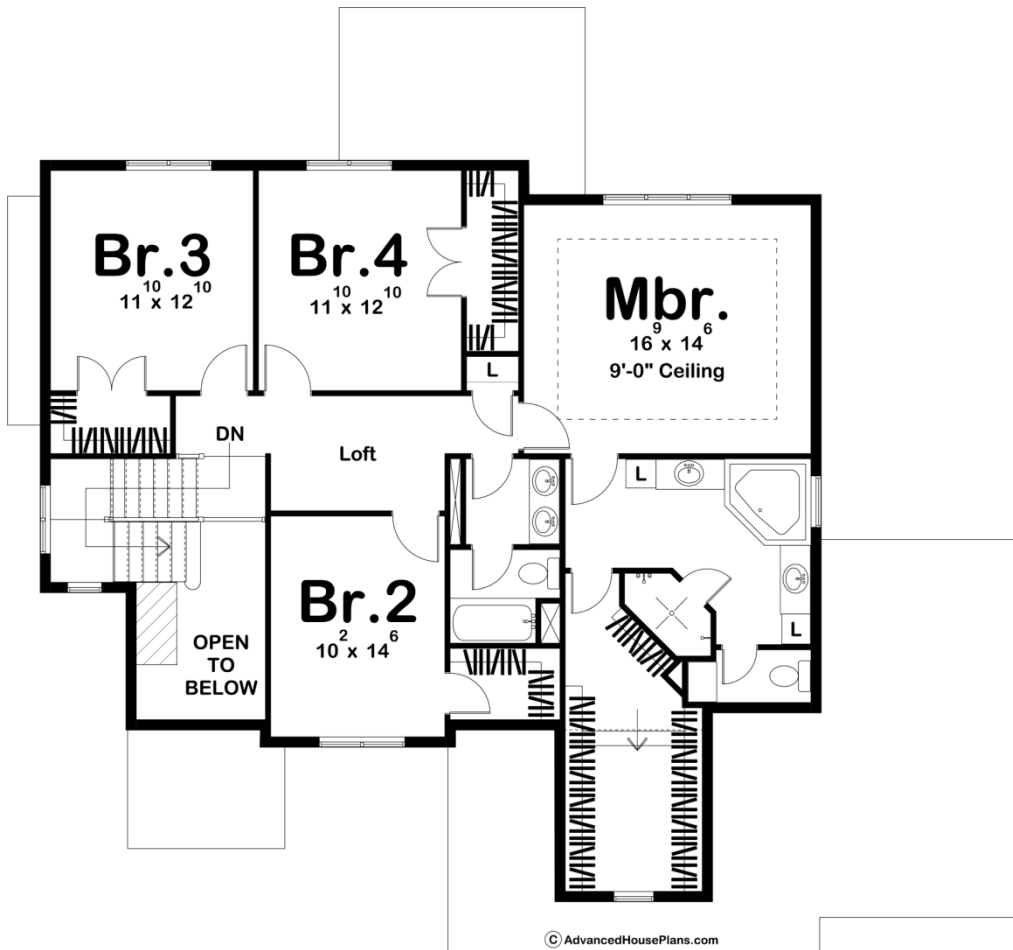




**29035 - Tuscan Data Sheet**

|               |           |            |           |                |                |
|---------------|-----------|------------|-----------|----------------|----------------|
| 2723<br>SQ FT | 4<br>BEDS | 3<br>BATHS | 3<br>BAYS | 60' 0"<br>WIDE | 55' 0"<br>DEEP |
|---------------|-----------|------------|-----------|----------------|----------------|





## Construction Specs

### Layout

|             |   |
|-------------|---|
| Bedrooms    | 4 |
| Bathrooms   | 3 |
| Garage Bays | 3 |

### Square Footage

|                     |              |
|---------------------|--------------|
| Main Level          | 1360 Sq. Ft. |
| Second Level        | 1363 Sq. Ft. |
| Garage              | 777 Sq. Ft.  |
| Total Finished Area | 2723 Sq. Ft. |

### Exterior Dimensions

|  |        |
|--|--------|
| Width                                  | 60' 0" |
| Depth                                  | 55' 0" |
| Ridge Height                           | 27'    |
| <i>Calculated from main floor line</i> |        |

## Default Construction Stats

*Stats are unique to the individual plan.*

|                            |          |
|----------------------------|----------|
| Foundation Type            | Basement |
| Exterior Wall Construction | 2x4      |
| Roof Pitches               | 6/12     |
| Foundation Wall Height     | 9'       |
| Main Wall Height           | 9'       |
| Second Wall Height         | 8'       |

## Plan Description

29035 TuscanDay-to-day family living is considered throughout the design of this 2-story Mediterranean house plan. A tall covered porch grants entry, where a bench and coat closet stand ready to assist with the on's-and-off's of shoes and jackets. Tasteful columns and ceiling details define the boundaries of the dining area and adjacent servery alcove. Further inside, the great room, with corner fireplace, opens to the kitchen and sunny breakfast area, which is brightened by high transom windows and has direct access to a rear covered deck. The kitchen is graced by an abundance of work space, as well as a sizeable walk-in pantry. Just off the kitchen, the 3-car garage accesses the home through a practical utility space that includes a mud room with coat closet and bench, powder bath and laundry room with counter space and soaking sink. On the second level, a spacious master suite offers pampering amenities in the bath, including an angled soaking tub and shower, his-and-her vanities, compartmented toilet and spacious walk-in closet. A hall bath serves the secondary bedrooms, which all have generous closet space and are brightened by natural light.