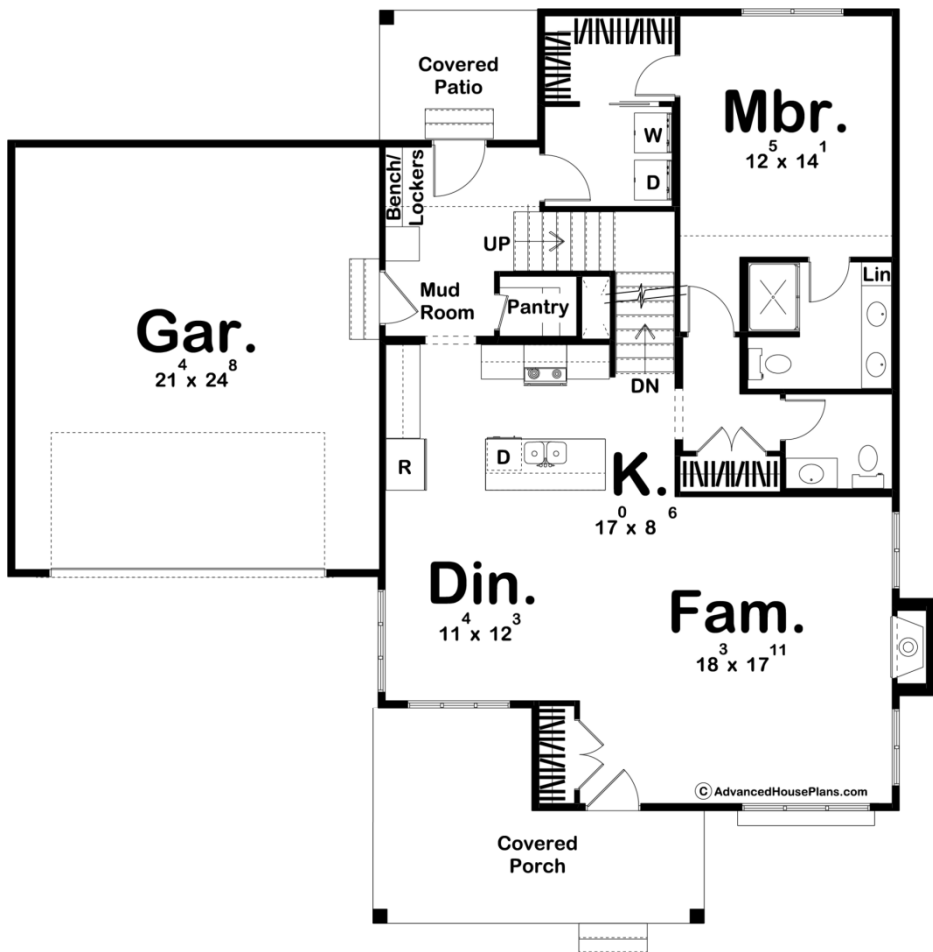
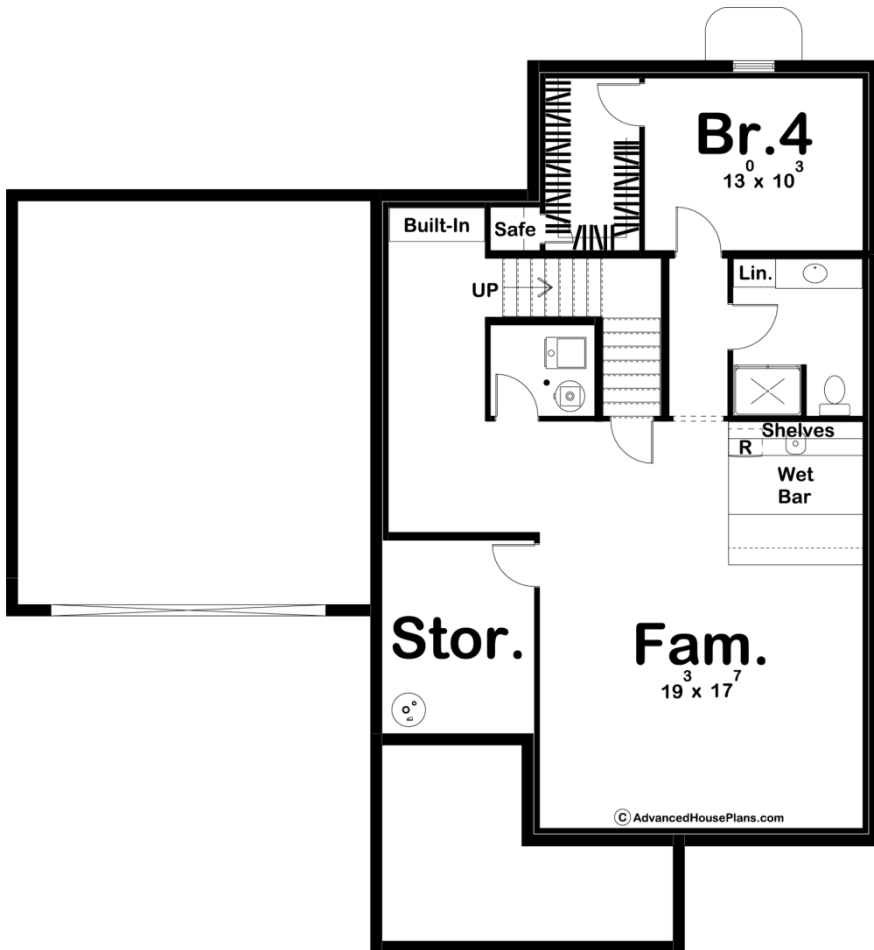
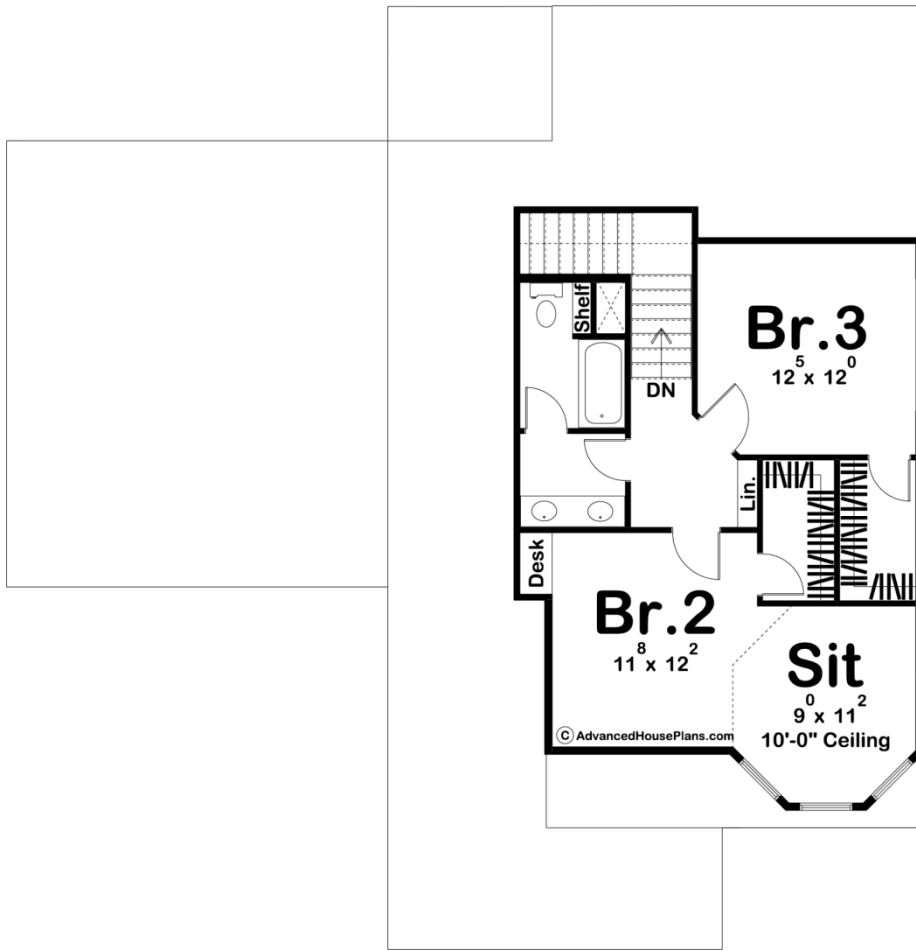




**29862 - Tobias Data Sheet**

1932 SQ FT	3 BEDS	3 BATHS	2 BAYS	52' 0" WIDE	54' 0" DEEP
---------------	-----------	------------	-----------	----------------	----------------





Construction Specs

## Layout

Bedrooms	3
Bathrooms	3
Garage Bays	2

## Square Footage

Main Level	1290 Sq. Ft.
Second Level	642 Sq. Ft.
Garage	549 Sq. Ft.
Total Finished Area	1932 Sq. Ft.

## Exterior Dimensions

Width	52' 0"
Depth	54' 0"

## Default Construction Stats

*Stats are unique to the individual plan.*

Foundation Type	Basement
Exterior Wall Construction	2x4
Roof Pitches	10/12 Primary, 3/12 18/12 Secondary
Foundation Wall Height	9'
Main Wall Height	8'
Second Wall Height	8'

## Plan Description

The Tobias plan combines old-world Victorian charm with modern amenities. The exterior of the home has excellent curb appeal with a beautiful tower and decorative wood accents. Inside the home, you'll find a well thought out floor plan. The dining room, kitchen, and family room flow together seamlessly in an open concept layout. The family room is warmed by a fireplace and lets in great natural light through its large windows. The kitchen includes an island with a snack bar and a walk-in pantry. Located on the main floor for convenience is the master suite. The master bathroom has dual vanities and a walk-in shower. The master closet has easy access to the laundry room for your ultimate convenience. Upstairs, you'll find 2 bedrooms each with its own walk-in closet. Bedroom 2 features a large sitting room and a built-in desk. Bedrooms 2 and 3 share a centrally located hall bathroom with dual vanities. An optional finished basement adds 1029 sq ft and includes an additional bedroom, an additional bathroom, a large family room, and a wet bar.