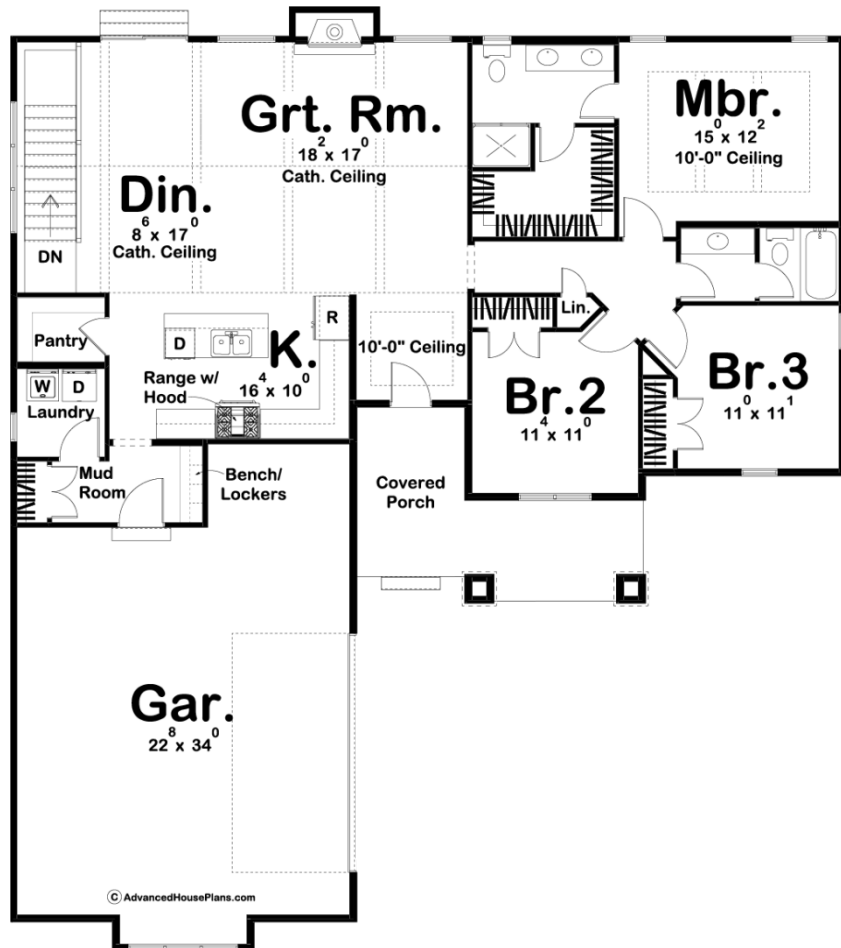




**29692 - Thornton Data Sheet**

1693 SQ FT	3 BEDS	2 BATHS	2 BAYS	57' 0" WIDE	64' 0" DEEP
---------------	-----------	------------	-----------	----------------	----------------



**Construction Specs**

Layout

Bedrooms

Bathrooms	2
-----------	---

Garage Bays	2
-------------	---

### Square Footage

Main Level	1693 Sq. Ft.
------------	--------------

Garage	698 Sq. Ft.
--------	-------------

Total Finished Area	1693 Sq. Ft.
---------------------	--------------

### Exterior Dimensions

Width	57' 0"
-------	--------

Depth	64' 0"
-------	--------

### Default Construction Stats

*Stats are unique to the individual plan.*

Foundation Type	Basement
-----------------	----------

Exterior Wall Construction	2x4
----------------------------	-----

Roof Pitches	8/12 Primary, 4/12 Secondary
--------------	------------------------------

Foundation Wall Height	9'
------------------------	----

Main Wall Height	9'
------------------	----

## Plan Description

An appealing blend of textures enhances the exterior of this Craftsman style 1-story house plan. Once inside you will find a beautifully arranged open floor plan. The great room is warmed by a fireplace and has a cathedral ceiling with exposed beams. Cooking will be a breeze in the kitchen that includes a large island with a breakfast bar and a walk-in pantry. The master suite includes his/her vanities and a walk-in closet. Bedrooms 2 and 3 share a conveniently located bathroom in the hall. The 2 car garage accesses the home through a mud room complete with bench and lockers.