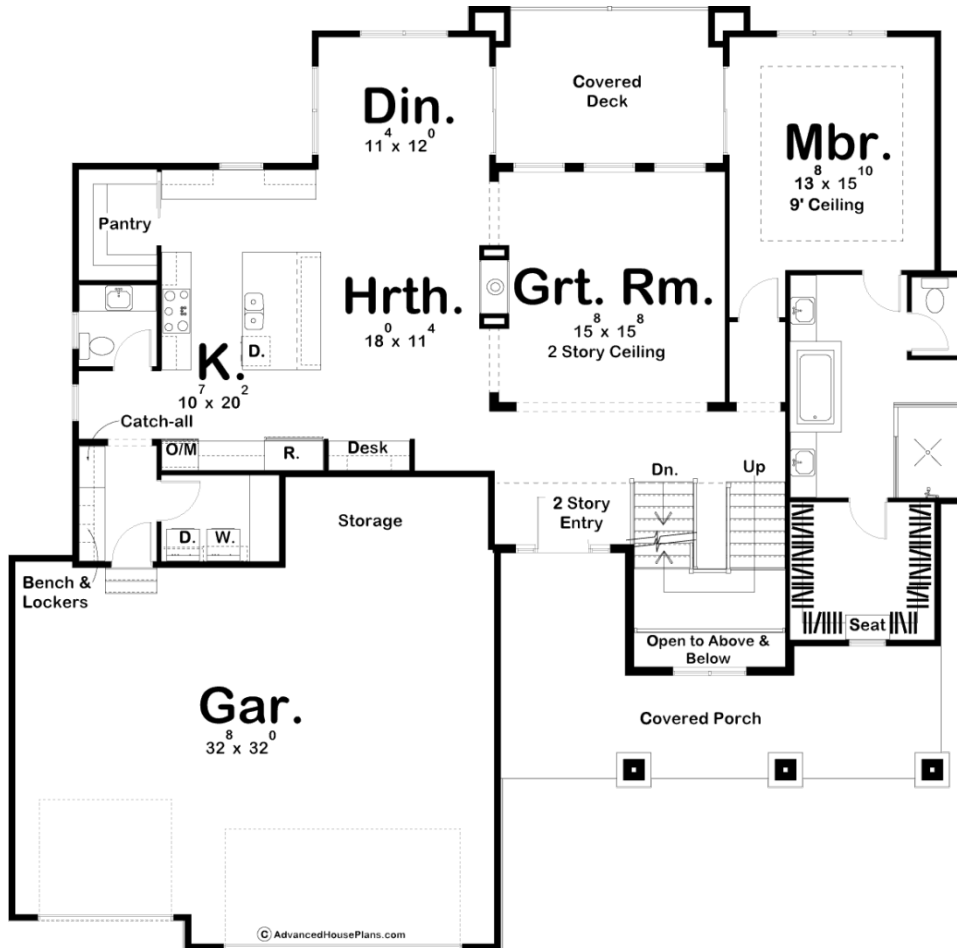
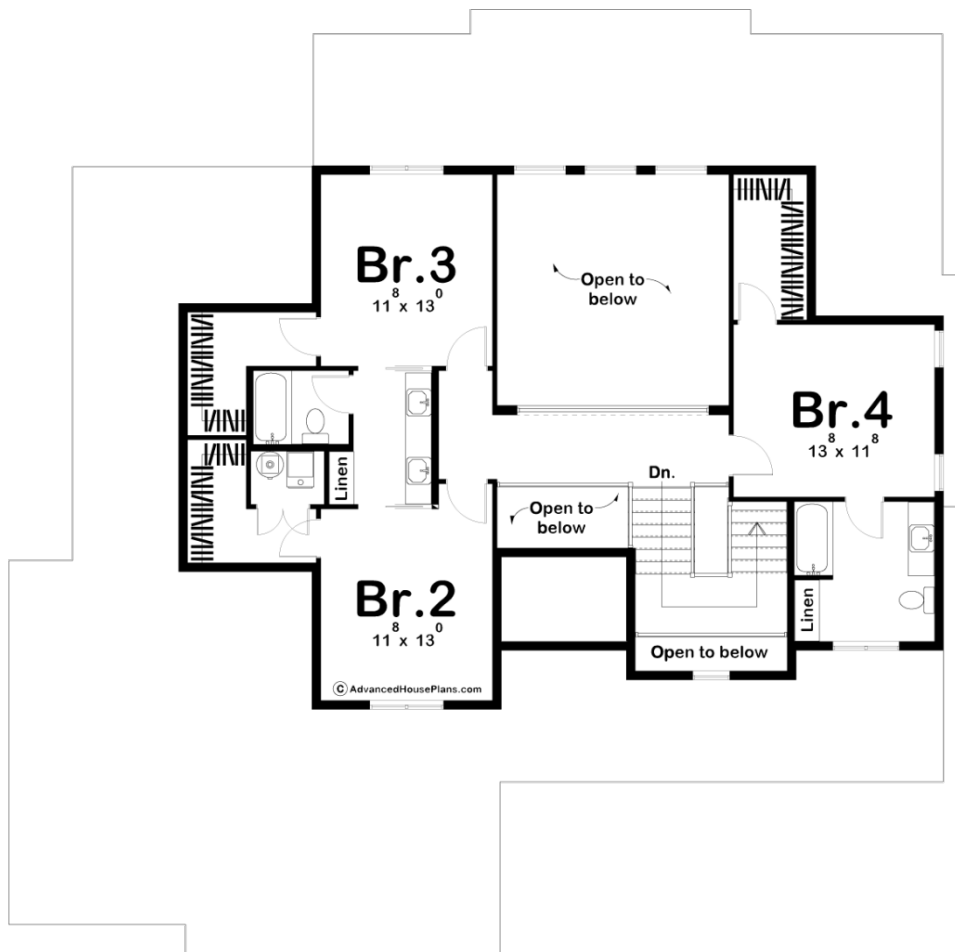




29372 - Texas Hillside Data Sheet

2955 SQ FT	4 BEDS	4 BATHS	3 BAYS	65' 0" WIDE	64' 0" DEEP
---------------	-----------	------------	-----------	----------------	----------------





Construction Specs

Layout

Bedrooms	4
Bathrooms	4
Garage Bays	3

Square Footage

Main Level	1898 Sq. Ft.
Second Level	1057 Sq. Ft.
Garage	933 Sq. Ft.
Total Finished Area	2955 Sq. Ft.

Exterior Dimensions

Width	65' 0"
Depth	64' 0"
Ridge Height	29' 0"
<i>Calculated from main floor line</i>	

Default Construction Stats

Stats are unique to the individual plan.

Foundation Type	Basement
Exterior Wall Construction	2x4
Roof Pitches	Primary 6/12, Secondary 4/12
Foundation Wall Height	9'
Main Wall Height	9'
Second Wall Height	8'

Plan Description

Stone shrouded details enhance the solid character of this family-friendly 1.5-story house plan. Grand impressions are made on the inside, beneath the entry and great room's 2-story-high ceiling. The great room, with views to the rear through a covered deck, shares a see-thru fireplace with the hearth room. The kitchen, open to the hearth room and dining area, boasts generous counter space, a work island, built-in desk, and walk-in pantry. The home's 3-car garage is accessed from the kitchen through a mudroom/utility area, complete with laundry, powder bath, bench, lockers, and a handy catch-all. The master suite rests quietly away from the hustle and bustle of the main-floor living areas. Its bath is well appointed with his and her vanities, compartmented toilet, spacious shower and roomy walk-in closet with built-in dressing seat. Upstairs, the three secondary bedrooms enjoy their own privacy. Each bedroom includes a walk-in closet. Bedrooms 2 and 3 share a Jack-n- Jill bath with compartmented toilet and tub. Bedroom 4 benefits from access to its own bath. Additional intriguing points of this house plan include views from second-story balconies to the great room and entry area below, as well as open views above and below from the U-shaped stairway.