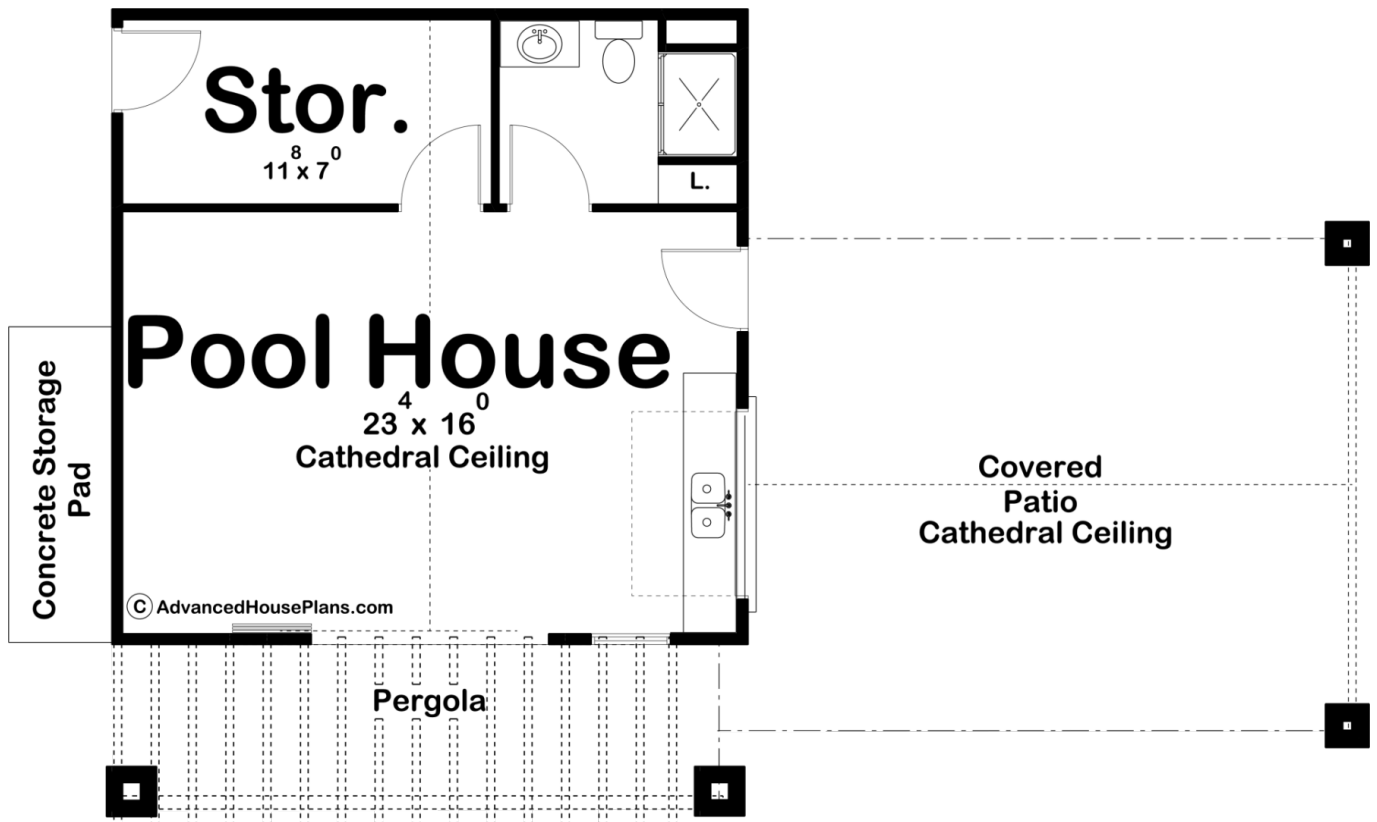




**29571 - Teton Data Sheet**

576 SQ FT	0 BEDS	1 BATHS	0 BAYS	48' 0" WIDE	31' 0" DEEP
--------------	-----------	------------	-----------	----------------	----------------



**Construction Specs**

Layout

Bathrooms

## Square Footage

Main Level	576 Sq. Ft.
Covered Area	480 Sq. Ft.
Total Finished Area	576 Sq. Ft.

## Exterior Dimensions

Width	48' 0"
Depth	31' 0"

## Default Construction Stats

*Stats are unique to the individual plan.*

Foundation Type	Slab
Exterior Wall Construction	2x4

## Plan Description

The Teton plan is a contemporary pool house with plenty of indoor and outdoor space. The covered patio is great for entertaining at any time of the day. Under the cathedral ceiling lies enough space for any size backyard BBQ. On the inside lies counter space with a double sink for all your prepping needs. This plan provides enough space for all types of furniture in the living area. It also includes a 3/4 bath with a linen cabinet. This pool house plan provides everything you need including a storage space for all pool equipment, plus access to it from the inside and outside. Don't forget about the attached pergola outside the front sliding door. Be sure to check out our other pool houses. As always any of our plans at Advanced House Plans can be customized to fit your needs with our alteration department. Whether you need to change the front elevation style, stretch it larger or just make the plan more affordable for your budget we can do that and more for you at Ahp.