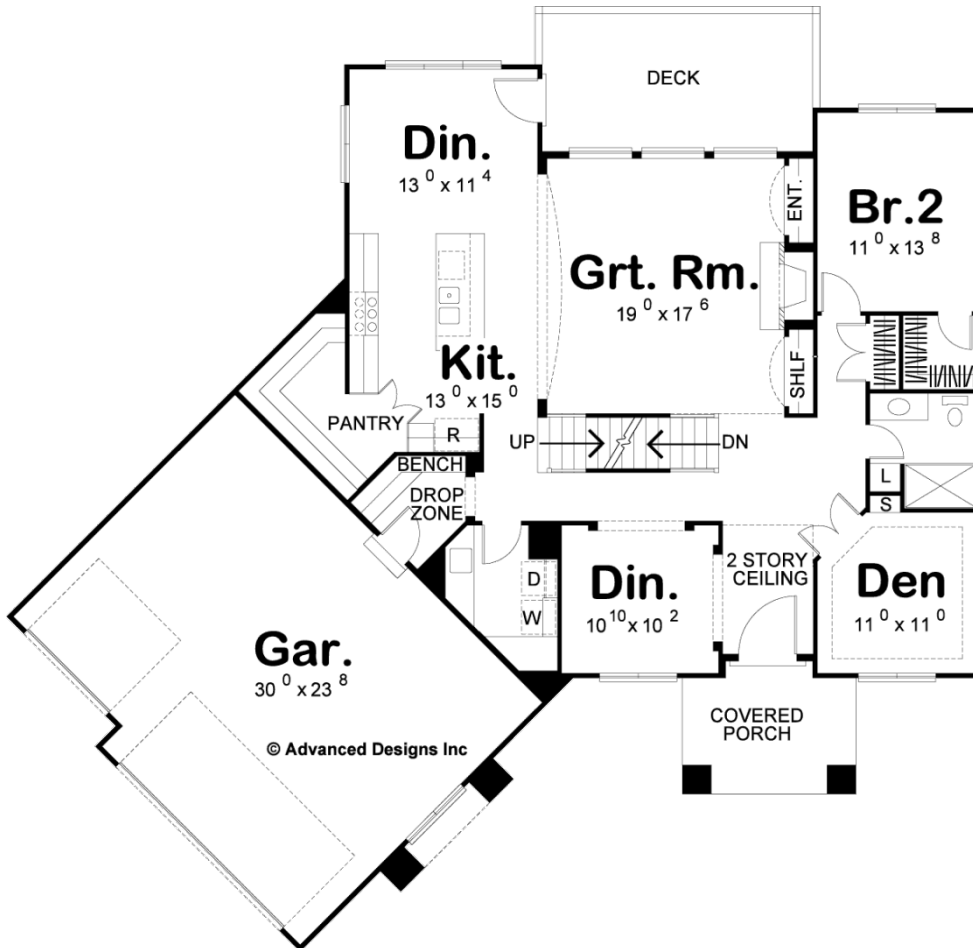
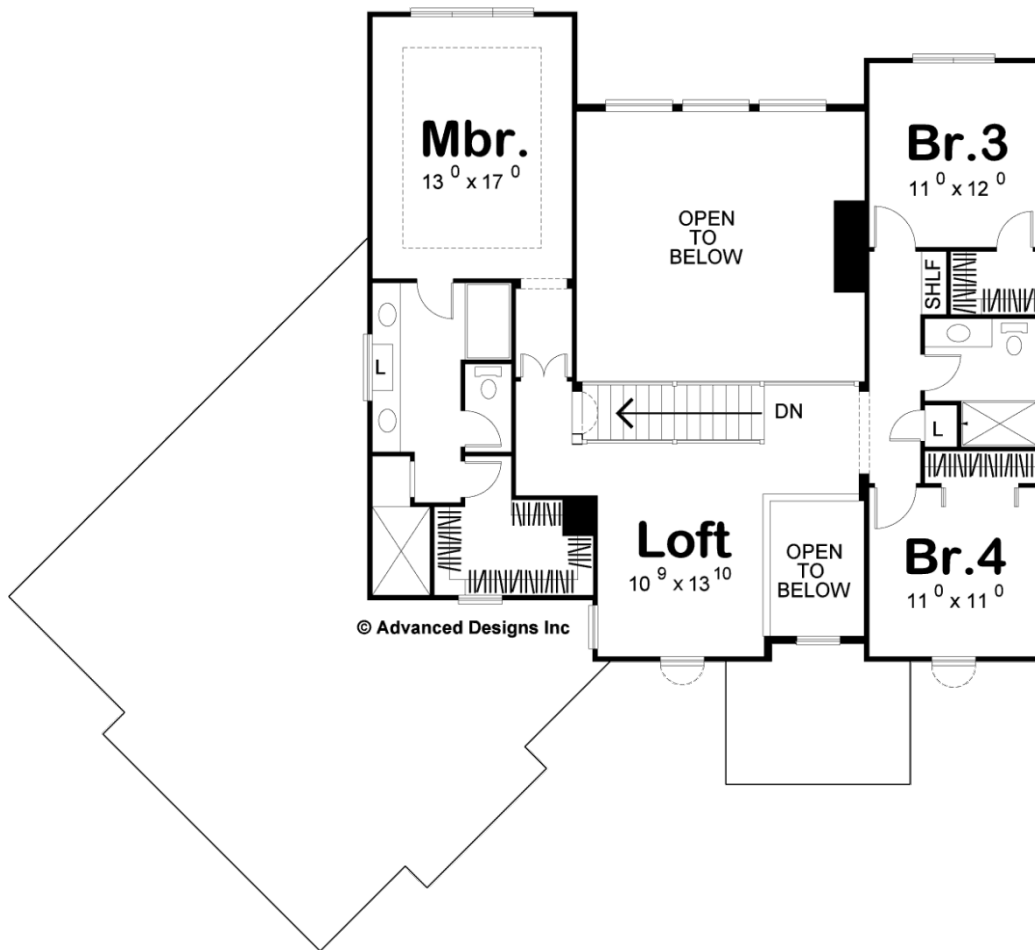




**29036 - Tempe Data Sheet**

3012 SQ FT	4 BEDS	3 BATHS	3 BAYS	68' 0" WIDE	66' 0" DEEP
---------------	-----------	------------	-----------	----------------	----------------





## Construction Specs

### Layout

Bedrooms	4
Bathrooms	3
Garage Bays	3

### Square Footage

Main Level	1700 Sq. Ft.
Second Level	1312 Sq. Ft.
Garage	731 Sq. Ft.
Total Finished Area	3012 Sq. Ft.

### Exterior Dimensions

Width	68' 0"
Depth	66' 0"

### Default Construction Stats

*Stats are unique to the individual plan.*

Foundation Type	Basement
-----------------	----------

Exterior Wall Construction	2x4
Roof Pitches	6/12
Foundation Wall Height	9'
Main Wall Height	9'
Second Wall Height	9'

## Plan Description

29036 TempeA blend of intriguing textures beneath shallow rooflines give this beautiful 2-story house plan an unmistakably Mediterranean flair. The front covered porch provides access to a 2-story-high entry hall that is flanked by a den and formal dining room. A beautifully appointed 2-story-high great room is situated to the rear. Its soaring fireplace is showcased by a built-in entertainment center and bookcase, and the entire space is brightened by a trio of large windows that look out onto the home's rear deck. A bright dining area and kitchen openly interact with the great room. The kitchen features an island work area and a roomy walk-in pantry. Just off the kitchen lies the laundry room and convenient drop zone area that accesses the angled 3-car-garage. A privately situated bedroom resides away from the main living areas and has the use of a nearby hall bath, complete with shower. Upstairs, the master suite is situated for privacy away from the secondary bedrooms. It's generously sized bath area includes his-and-her vanities, soaking tub, compartmented toilet, walk-in shower, and walk-in closet. Bedrooms 3 and 4 are brightened by plenty of natural light and they share a central hall bath. A loft area provides a comfortable space for reading, homework or hobbies, and offers elevated views to the main floor below.