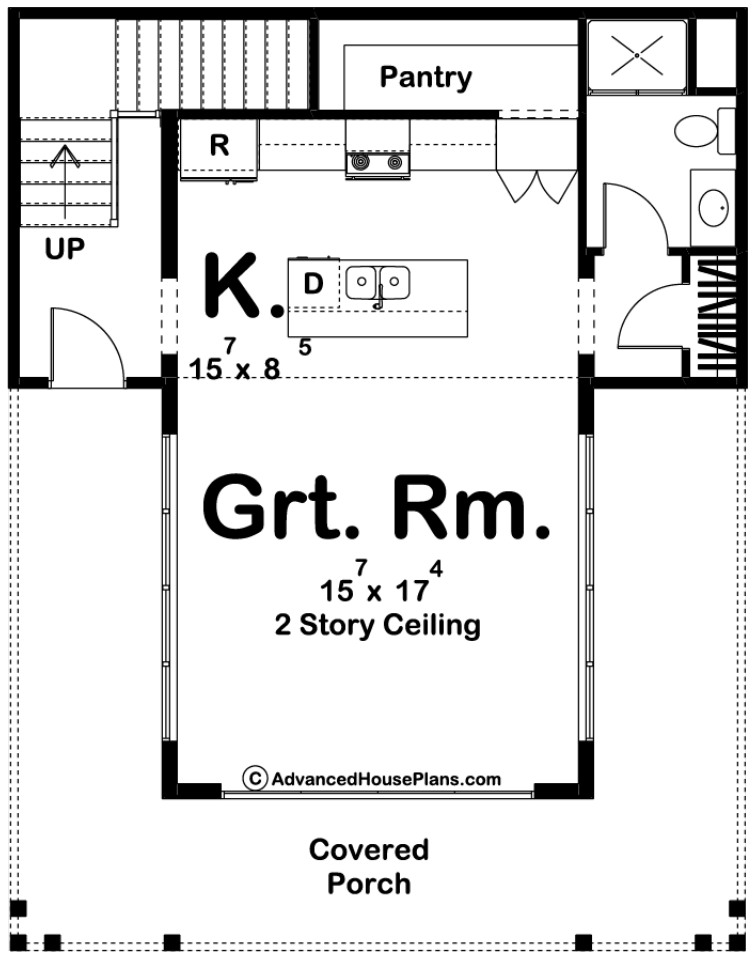
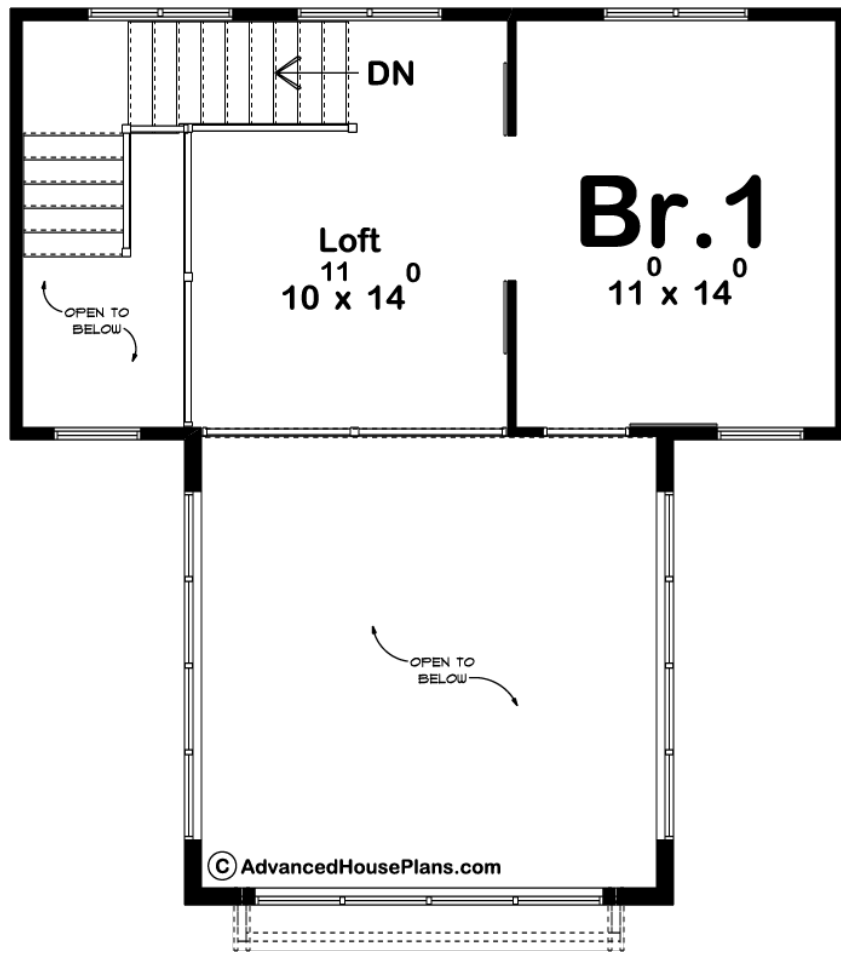




### 29548 - Teagan Data Sheet

999 SQ FT	1 BEDS	1 BATHS	0 BAYS	29' 0" WIDE	37' 0" DEEP
--------------	-----------	------------	-----------	----------------	----------------





## Construction Specs

### Layout

Bedrooms	1
Bathrooms	1

### Square Footage

Main Level	687 Sq. Ft.
Second Level	312 Sq. Ft.
Total Finished Area	999 Sq. Ft.

### Exterior Dimensions

Width	29' 0"
Depth	37' 0"
Ridge Height	24' 0"
<i>Calculated from main floor line</i>	

### Default Construction Stats

*Stats are unique to the individual plan.*

Foundation Type	Slab
-----------------	------

Exterior Wall Construction	2x4
Roof Pitches	Primary 6/12, Secondary 3/12 4/12
Main Wall Height	9'
Second Wall Height	8'

## Plan Description

This cabin has impressive curb appeal with a large covered porch and lots of windows for excellent views, daylighting, and natural ventilation. Teagan includes a great room with a 2 story ceiling and an open kitchen. The kitchen includes a full-size refrigerator, range, island and breakfast bar. The second level includes a nice size loft with a view down into the great room and a bedroom. This plan, like all of our house, garage, and shed plans, can be modified to meet your specific needs!