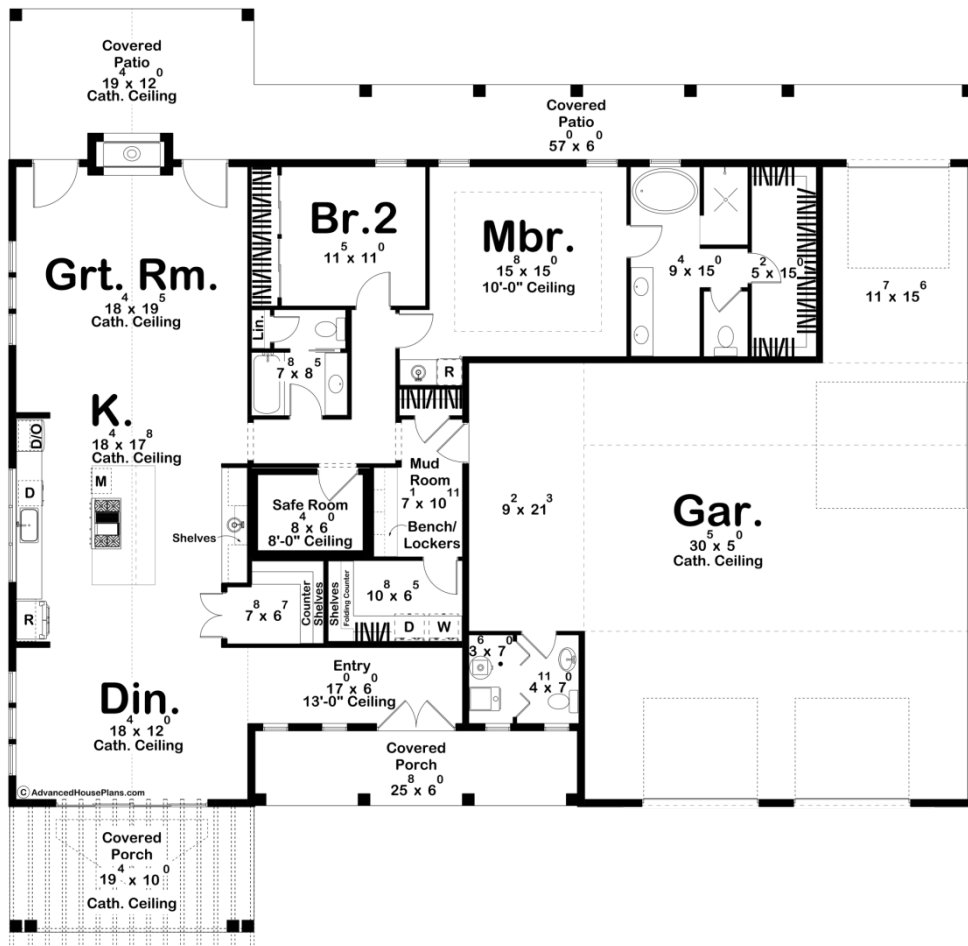




**30651 - Summerset Data Sheet**

2199 SQ FT	2 BEDS	3 BATHS	4 BAYS	76' 4" WIDE	73' 0" DEEP
---------------	-----------	------------	-----------	----------------	----------------



**Construction Specs**

**Layout**

Bedrooms

Bathrooms	3
Garage Bays	4
<b>Square Footage</b>	
Main Level	2199 Sq. Ft.
Covered Area	930 Sq. Ft.
Garage	1481 Sq. Ft.
Total Finished Area	2199 Sq. Ft.
<b>Exterior Dimensions</b>	
Width	76' 4"
Depth	73' 0"
Ridge Height <i>Calculated from main floor line</i>	20' 11"
<b>Default Construction Stats</b> <i>Stats are unique to the individual plan.</i>	
Foundation Type	Slab
Exterior Wall Construction	2x4
Roof Pitches	Primary 3/12, Secondary 8/12
Main Wall Height	9'

## Plan Description

Introducing the Summerset, this charming Barndominium house plan features a welcoming front covered porch adorned with decorative beams, perfect for enjoying peaceful evenings. At the rear, a spacious patio overlooks a serene dock and pond, ideal for relaxation or entertaining. The large garage includes an RV bay and convenient bathroom, making it perfect for adventurous lifestyles. Inside, you'll find two cozy bedrooms, with the master suite offering a luxurious bathroom complete with a freestanding tub, double vanity, and shower. The open-concept dining, kitchen, and great room boast impressive floor-to-ceiling windows, flooding the space with natural light and providing stunning views of the surrounding landscape. This design beautifully blends modern comfort with rustic charm.