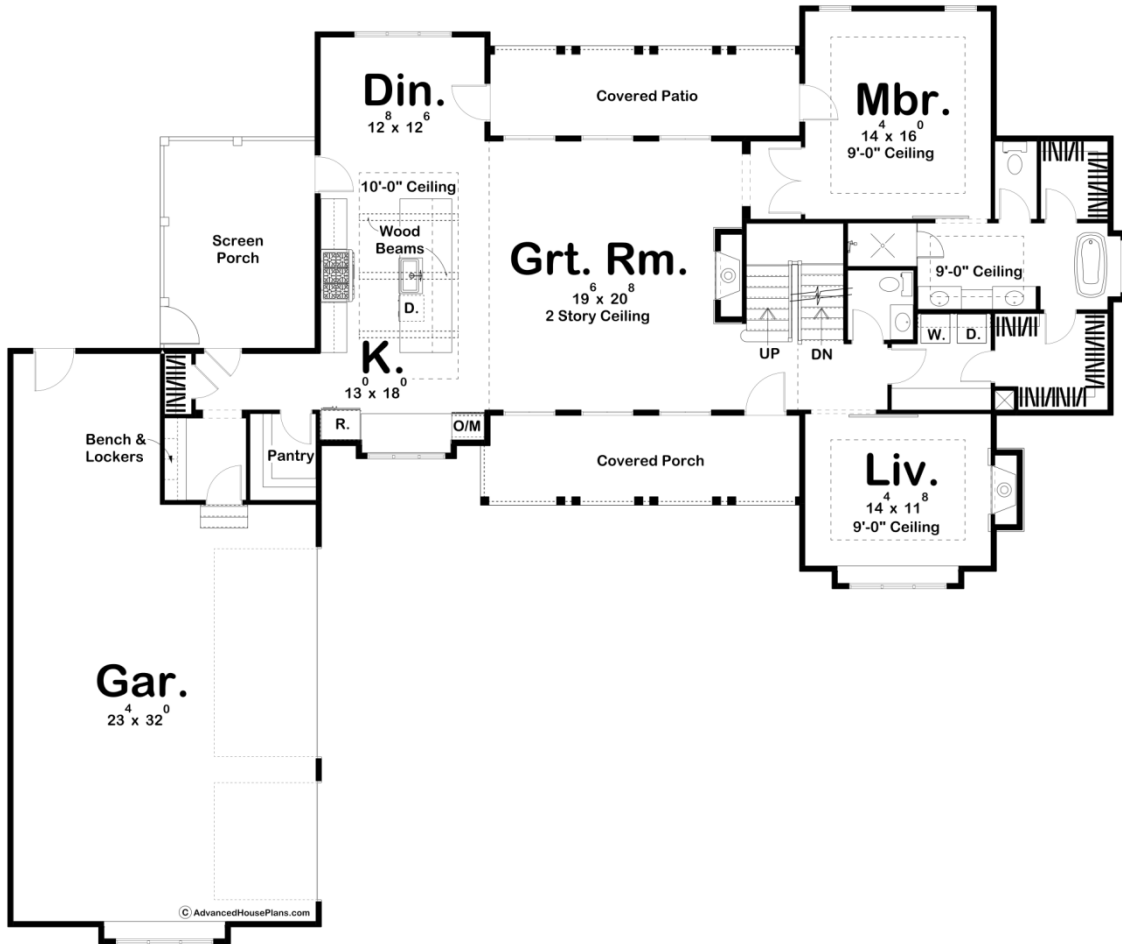
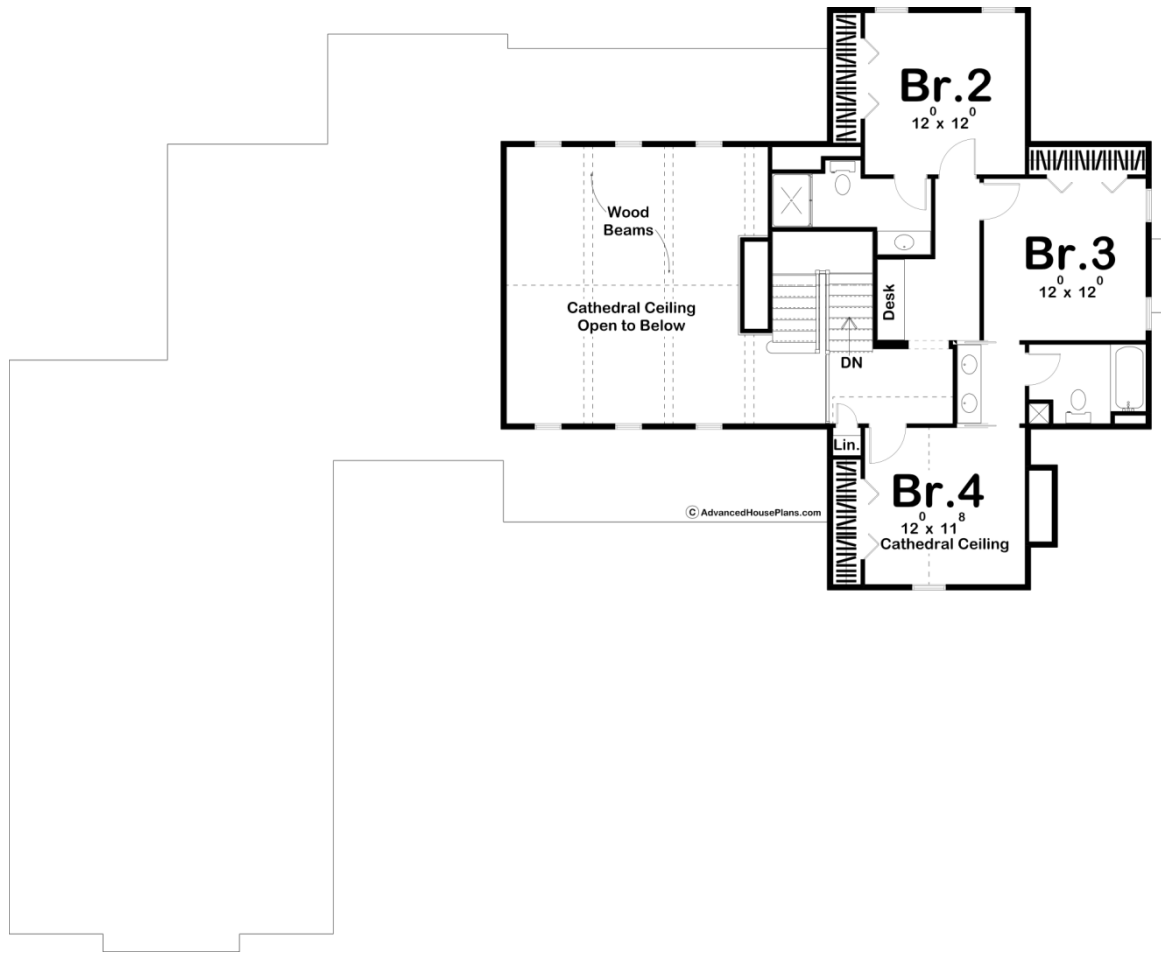




29386 - Summerfield Data Sheet

2768 SQ FT	4 BEDS	4 BATHS	3 BAYS	86' 0" WIDE	72' 0" DEEP
---------------	-----------	------------	-----------	----------------	----------------





## Construction Specs

### Layout

Bedrooms	4
Bathrooms	4
Garage Bays	3

### Square Footage

Main Level	1926 Sq. Ft.
Second Level	842 Sq. Ft.
Garage	917 Sq. Ft.
Total Finished Area	2768 Sq. Ft.

### Exterior Dimensions

Width	86' 0"
Depth	72' 0"
Ridge Height	30' 0"
<i>Calculated from main floor line</i>	

## Default Construction Stats

*Stats are unique to the individual plan.*

Foundation Type	Basement
Exterior Wall Construction	2x4
Roof Pitches	12/12 primary
Foundation Wall Height	9'
Main Wall Height	9'
Second Wall Height	8'

## Plan Description

The great expanses of this L-shaped, 1.5-story, Modern Farmhouse plan are highlighted by three separate outdoor living areas -- a covered front porch, covered patio, and screen porch. Inside, immediate impressions are made by a soaring 2-story-high, wood-beamed cathedral ceiling in the great room. A trio of tall windows complements both the front and rear walls of the great room, offering views through the front porch and rear patio. The kitchen, with expansive work island, lies beneath its own beamed ceiling and is open to the dining area. Away from the living areas, the main floor's master suite features his and her walk-in closets, and his and her vanities in the bath. The suite can be entered either through an alcove off the great room or through a more circuitous route from the laundry area. Upstairs, bedroom 2 enjoys its own bath, while bedrooms 3 and 4 share a Jack-n-Jill bath. Bedroom 4 receives an added sense of space from a tall cathedral ceiling. Back on the main level, the generously proportioned 3-car garage includes ample space for a workshop. It accesses the home through a mudroom, complete with bench, lockers and a coat closet.