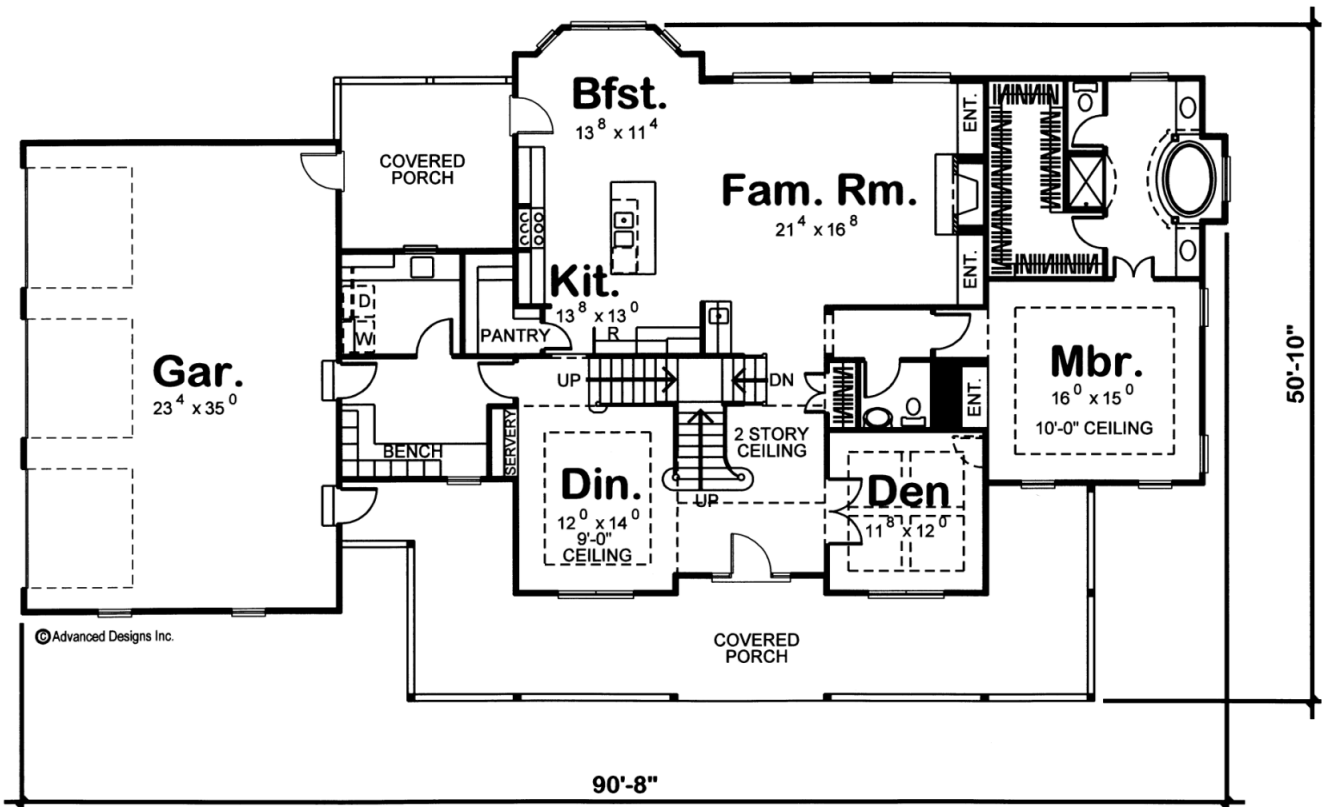
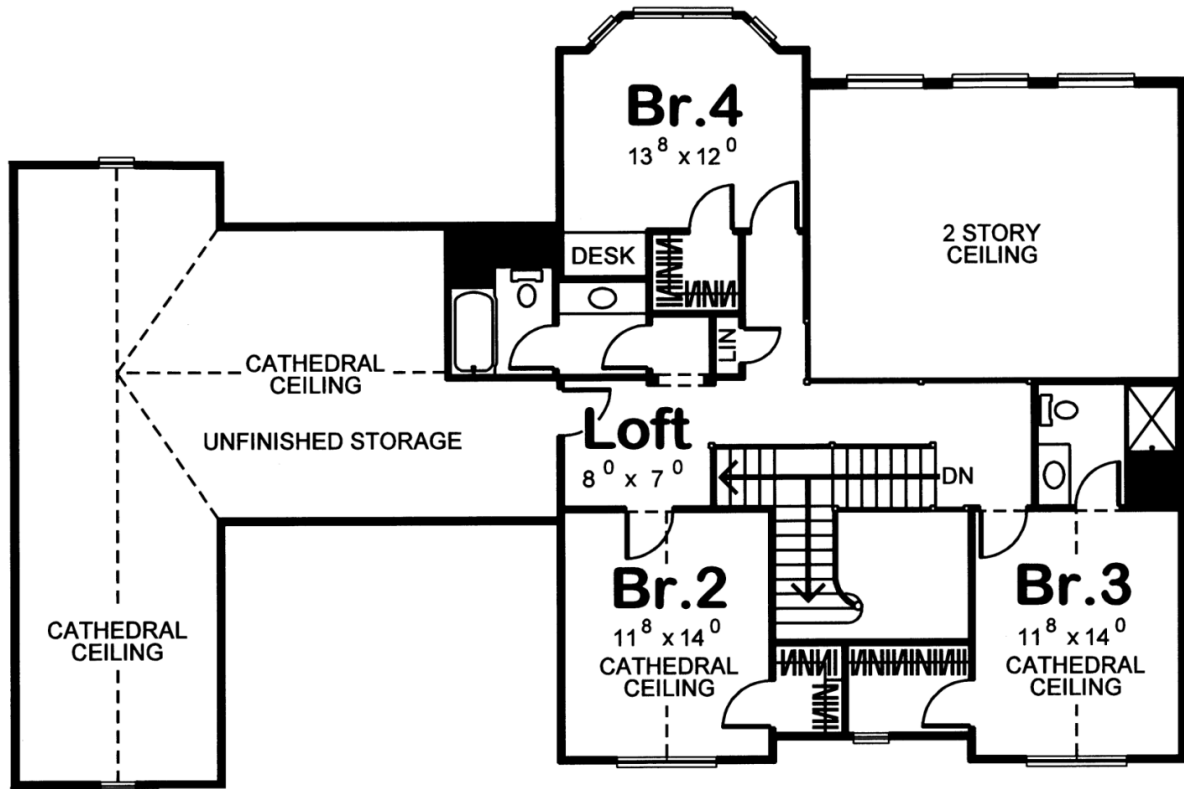




**29150 - Stratfield Data Sheet**

3153 SQ FT	4 BEDS	4 BATHS	3 BAYS	90' 0" WIDE	51' 0" DEEP
---------------	-----------	------------	-----------	----------------	----------------





## Construction Specs

### Layout

Bedrooms	4
Bathrooms	4
Garage Bays	3

### Square Footage

Main Level	2168 Sq. Ft.
Second Level	985 Sq. Ft.
Garage	856 Sq. Ft.
Total Finished Area	3153 Sq. Ft.

### Exterior Dimensions

Width	90' 0"
Depth	51' 0"
Ridge Height	30'
<i>Calculated from main floor line</i>	

## Default Construction Stats

*Stats are unique to the individual plan.*

Foundation Type	Basement
Exterior Wall Construction	2x4
Roof Pitches	10/12
Foundation Wall Height	9'
Main Wall Height	9'
Second Wall Height	8'

## Plan Description

An inviting covered porch embraces the front of this country-style, 1.5-story house plan. Once inside, guests are greeted by a 2-story-high entry area, flanked by the formal dining room and den. A few steps farther inside reveal views of the family room, with its soaring 2-story-high ceiling, fireplace and built-in entertainment center. Open to the breakfast area and kitchen, this active family living area is brightened by a bank of windows to the rear. The island kitchen offers plenty of workspace and includes a walk-in pantry. The adjoining bayed breakfast area accesses a covered rear porch for open-air dining options. On the opposite side of this design's floor plan, a sizeable master suite lies hidden away for privacy. It's bath area includes his and her vanities, soaking tub, shower, compartmented toilet and walk-in closet.

Upstairs, all three secondary bedrooms enjoy walk-in closets. Bedroom 3 has its own bath, while bedrooms 2 and 4 share a conveniently located hall bath, just off the central loft area. An expanse of unfinished storage, beneath cathedral ceilings, offers unlimited options for future use. Back on the main floor, the 3-car garage has three convenient access points to the home, one of which is through the mudroom, complete with benches and storage cubbies. This practical area accesses the laundry, which includes counter space and a soaking sink.