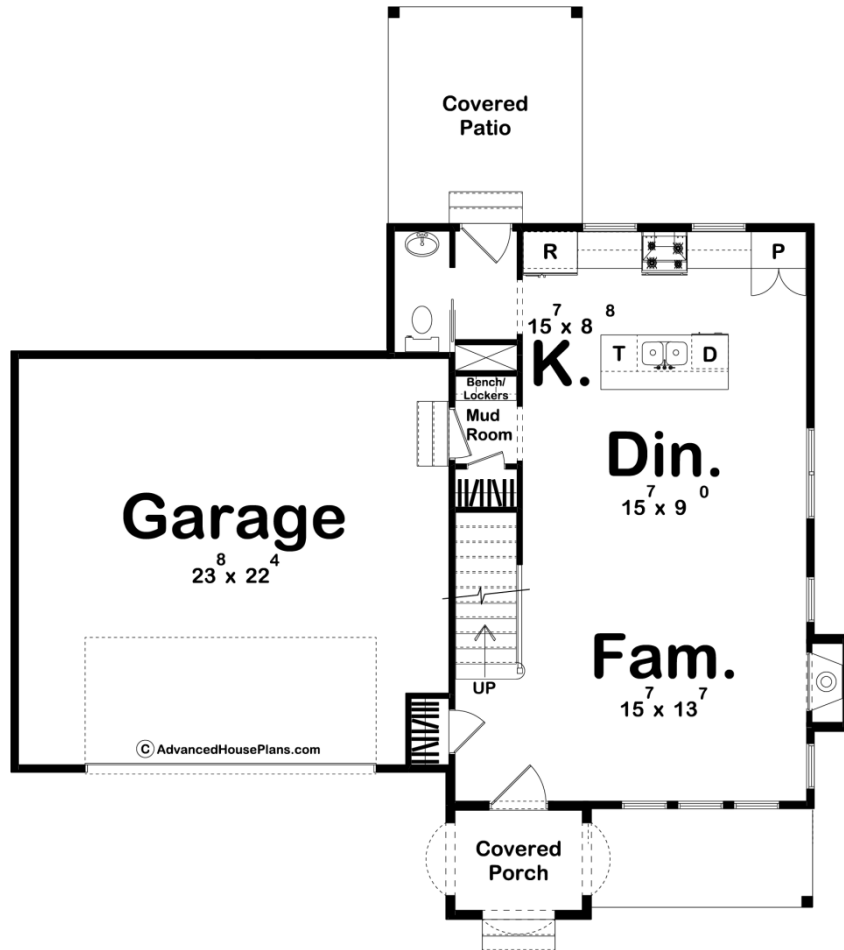
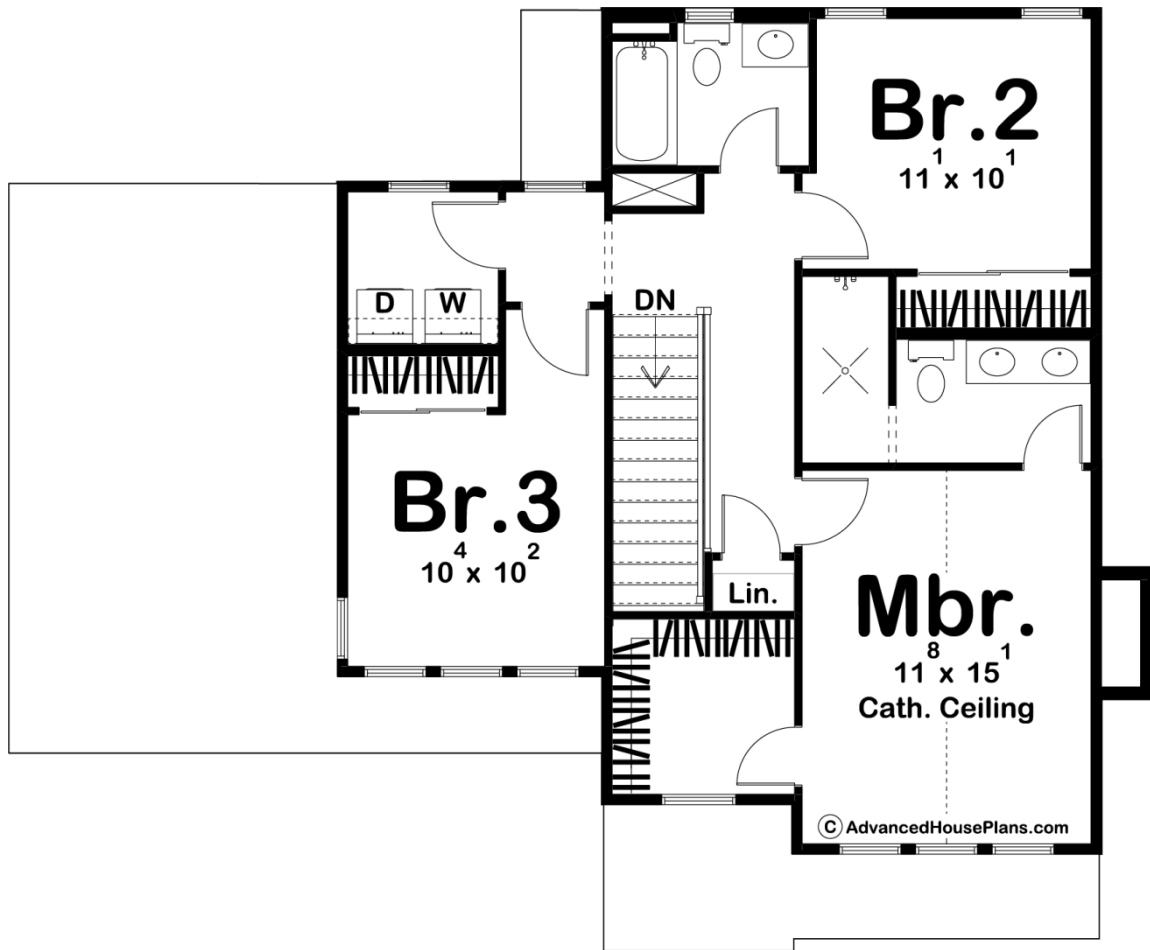




### 29834 - Sterling Heights Data Sheet

1499 SQ FT	3 BEDS	3 BATHS	2 BAYS	40' 0" WIDE	50' 0" DEEP
---------------	-----------	------------	-----------	----------------	----------------





## Construction Specs

### Layout

Bedrooms	3
Bathrooms	3
Garage Bays	2

### Square Footage

Main Level	674 Sq. Ft.
Second Level	825 Sq. Ft.
Covered Area	248 Sq. Ft.
Garage	541 Sq. Ft.
Total Finished Area	1499 Sq. Ft.

### Exterior Dimensions

Width	40' 0"
Depth	50' 0"
Ridge Height	27'
<i>Calculated from main floor line</i>	

## Default Construction Stats

*Stats are unique to the individual plan.*

Foundation Type	Crawlspace
Exterior Wall Construction	2x4
Roof Pitches	6/12 Primary, 6/12 Secondary
Main Wall Height	9'
Second Wall Height	8'

## Plan Description

The Sterling Heights plan is an efficient 2 story Modern Farmhouse style house plan. The front of the house shows fantastic curb appeal with its covered porch and contrasting siding colors. At only 1499 sq. ft., this plan is an efficient plan that lowers the cost-to-build. Inside the home, the family room, dining room, and kitchen flow seamlessly in an open layout. The family room is warmed by a fireplace and the large front windows allow in plenty of natural light. The kitchen includes a working island with a snack bar and a nice reach-in pantry. A powder bath is conveniently located off the rear of the kitchen. On the second floor, you'll find 3 bedrooms. The master suite lies under a soaring cathedral ceiling and includes a bathroom with his/her vanities and a walk-in shower. Bedrooms 2 and 3 share a centrally located hall bathroom.