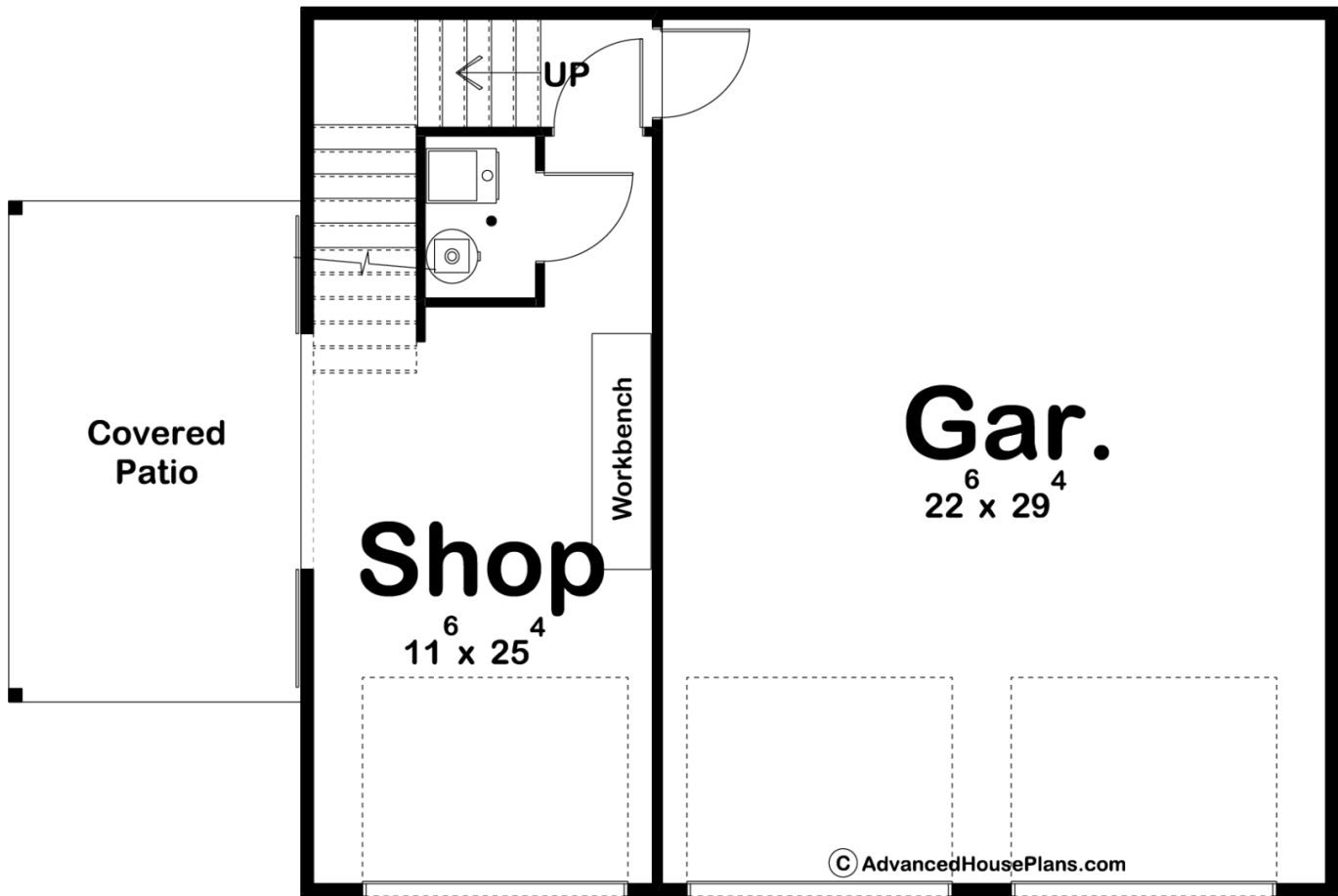
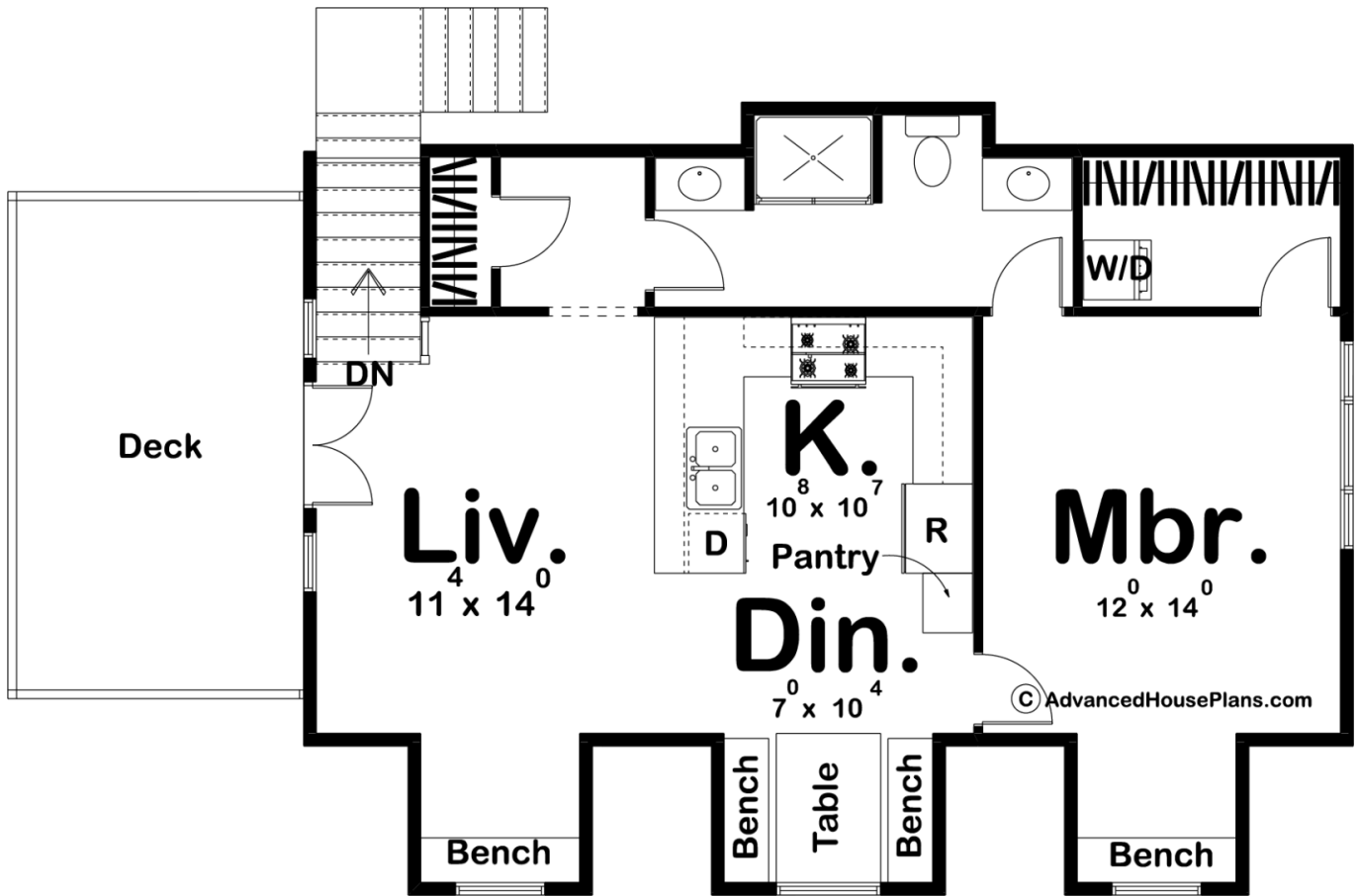




29730 - Stable View Data Sheet

774 SQ FT	1 BEDS	1 BATHS	3 BAYS	45' 0" WIDE	30' 0" DEEP
--------------	-----------	------------	-----------	----------------	----------------





Construction Specs

Layout

Bedrooms	1
Bathrooms	1
Garage Bays	3

Square Footage

Second Level	774 Sq. Ft.
Garage	1050 Sq. Ft.
Total Finished Area	774 Sq. Ft.

Exterior Dimensions

Width	45' 0"
Depth	30' 0"

Default Construction Stats

Stats are unique to the individual plan.

Foundation Type	Slab
Exterior Wall Construction	2x4

Roof Pitches	6/12 Primary, 22/12 Secondary
Main Wall Height	9'
Second Wall Height	9'

Plan Description

Whether you are looking to add guest space to your current house or you want to live where you work, the Stable View apartment garage is a great solution. A mixture of board and batten siding, sliding wood shutters, wood garage doors and a sliding barn door gives this apartment garage a unique modern farmhouse style. On the lower level, you will find a large 2 car garage and a workshop that includes an overhead door. The workshop has access to the covered patio through a sliding barn door and includes a practical workbench. In the upstairs living area, you will find an efficient open floor plan that includes a u-shaped kitchen with a breakfast bar. Just off the kitchen is a wonderful built-in table with benches in the dining area. The master suite includes access to the bathroom and a built-in window bench.