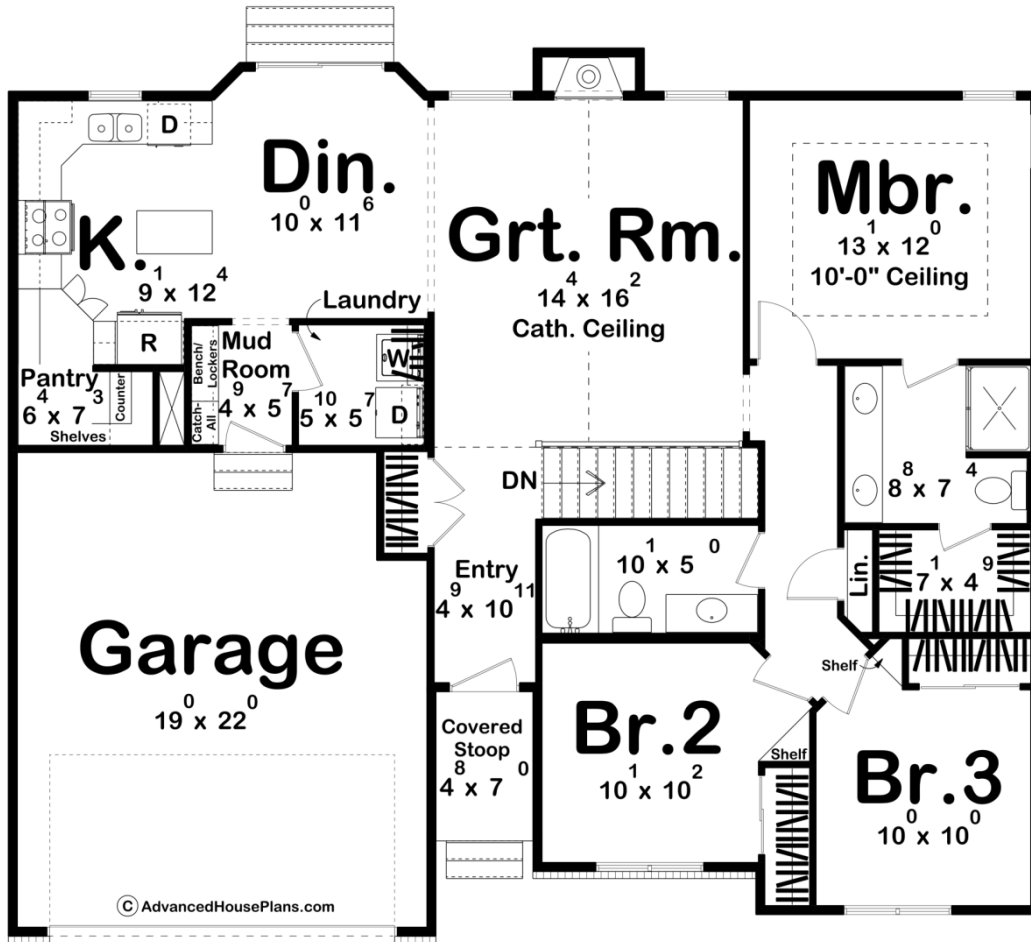




**29059 - Springhill Data Sheet**

1343 SQ FT	3 BEDS	2 BATHS	2 BAYS	47' 8" WIDE	41' 0" DEEP
---------------	-----------	------------	-----------	----------------	----------------



**Construction Specs**

Layout

Bedrooms

Bathrooms	2
Garage Bays	2

### Square Footage

Main Level	1343 Sq. Ft.
Garage	423 Sq. Ft.
Total Finished Area	1343 Sq. Ft.

### Exterior Dimensions

Width	47' 8"
Depth	41' 0"
Ridge Height <i>Calculated from main floor line</i>	22' 0"

### Default Construction Stats

*Stats are unique to the individual plan.*

Foundation Type	Basement
Exterior Wall Construction	2x4
Roof Pitches	8/12
Foundation Wall Height	9'
Main Wall Height	9'

## Plan Description

The Springhill plan maximizes its compact footprint to create a beautifully simple home. As you enter, you're greeted by a spacious great room with a soaring cathedral ceiling, filled with natural light from the backyard windows and warmed by a cozy fireplace. The open layout leads into the dining room and kitchen, featuring an island and walk-in pantry. On the right side, the master suite offers dual vanities, a walk-in shower, and a roomy walk-in closet. Bedrooms 2 and 3 share a centrally located hall bath. The home is also accessible through a mudroom with lockers, connecting to the 2-car garage. Despite its 1,343 sq. ft. size, this home feels anything but small.