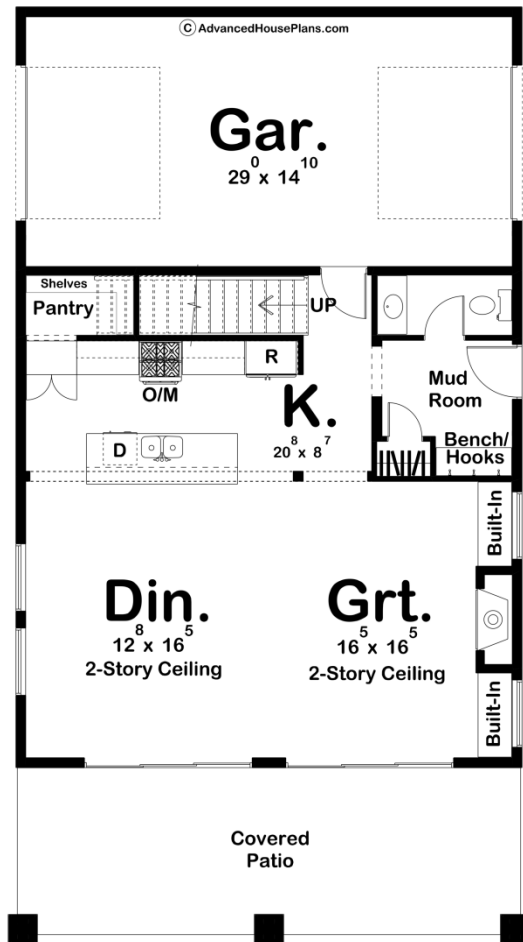
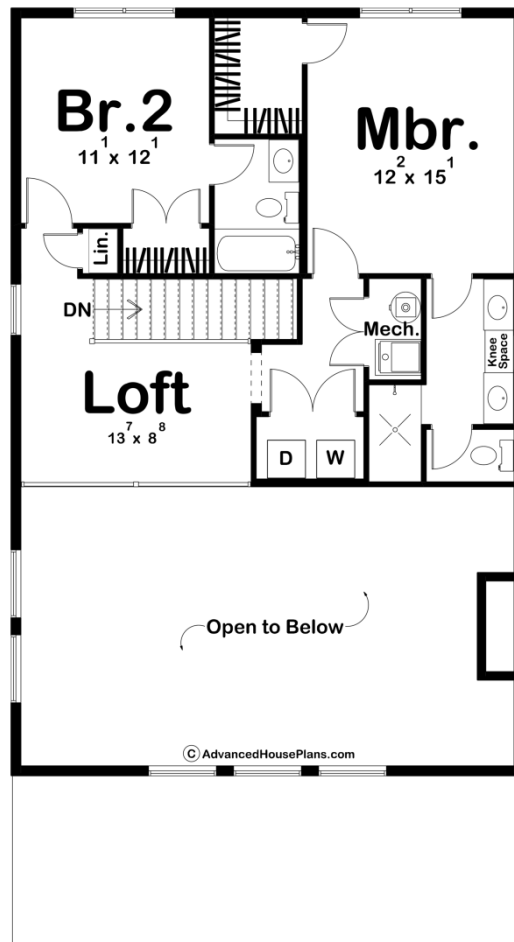




**30226 - Southaven Data Sheet**

1690 SQ FT	2 BEDS	3 BATHS	1 BAYS	30' 8" WIDE	55' 4" DEEP
---------------	-----------	------------	-----------	----------------	----------------





## Construction Specs

### Layout

Bedrooms	2
Bathrooms	3
Garage Bays	1

### Square Footage

Main Level	890 Sq. Ft.
Second Level	800 Sq. Ft.
Covered Area	300 Sq. Ft.
Garage	465 Sq. Ft.
Total Finished Area	1690 Sq. Ft.

### Exterior Dimensions

Width	30' 8"
Depth	55' 4"
Ridge Height	26' 3"
<i>Calculated from main floor line</i>	

## Default Construction Stats

*Stats are unique to the individual plan.*

Foundation Type	Slab
Exterior Wall Construction	2x6
Roof Pitches	Primary 6/12, Secondary 3/12
Main Wall Height	9'
Second Wall Height	8'

## Plan Description

This modern barndominium is a gorgeous plan that includes pieces of the barndominium, farmhouse, and modern styles all in one. With it only being 1690 square feet, the Southaven plan is relatively efficient as well as affordable. A dark exterior with large windows gives this plan a great curb appeal. Step in through the garage, or the front door that leads into a mudroom. Here, you can place items on the built-in bench, or step into the powder bath and clean up from outside. After walking through the mudroom, you are welcomed by a spacious kitchen, including a large breakfast bar and walk in pantry. The dining and great room just across the way are a great space to entertain, with 2-story ceilings and an open area for chatting with friends. Head upstairs to find the master suite as well as an additional bedroom and loft area. The master is complete with a large walk-in closet, private bath with separate toilet and shower area, as well as a double vanity. Bedroom two also has great closet space, a private bath, and is connected to a loft that looks down to the dining room.