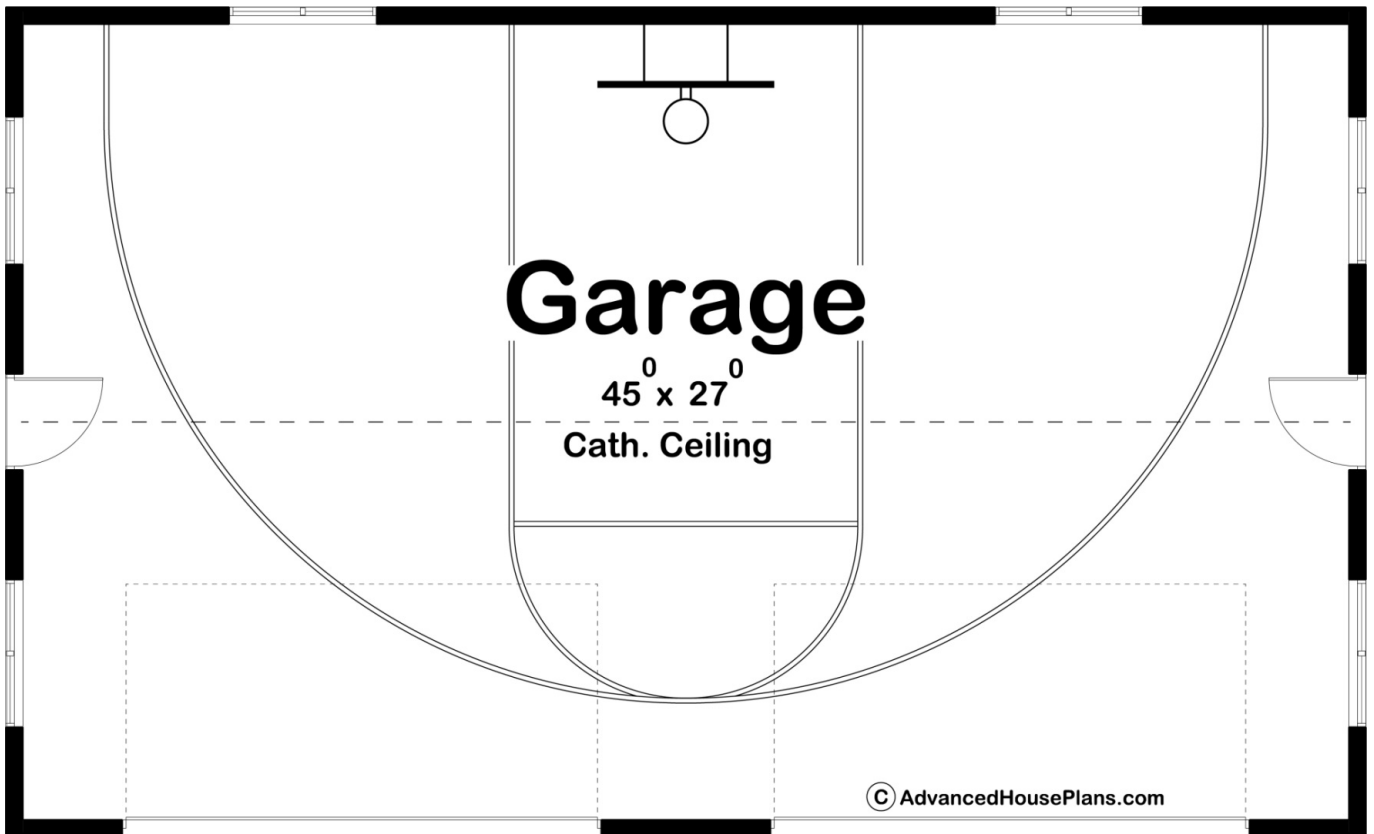




© WWW.ADVANCEDHOUSEPLANS.COM

29364 - Sooter Data Sheet

| | | | | | |
|------------|-----------|------------|-----------|----------------|----------------|
| 0 SQ FT | 0 BEDS | 0 BATHS | 4 BAYS | 46' 0" WIDE | 28' 0" DEEP |
|------------|-----------|------------|-----------|----------------|----------------|



Construction Specs

Layout

Garage Bays

Square Footage

Garage 1288 Sq. Ft.

Exterior Dimensions

Width 46' 0"

Depth 28' 0"

Ridge Height 26' 0"
Calculated from main floor line

Default Construction Stats

Stats are unique to the individual plan.

Foundation Type Slab

Exterior Wall Construction 2x6

Roof Pitches 8/12 Primary

Main Wall Height 16'

Plan Description

Sooter is a 4 car garage on slab with 16' tall walls. The space is perfect for a half-court sized basketball court but works just as well as a workshop where tall spaces are required. The plan has clerestory windows all around to let in plenty of daylight.