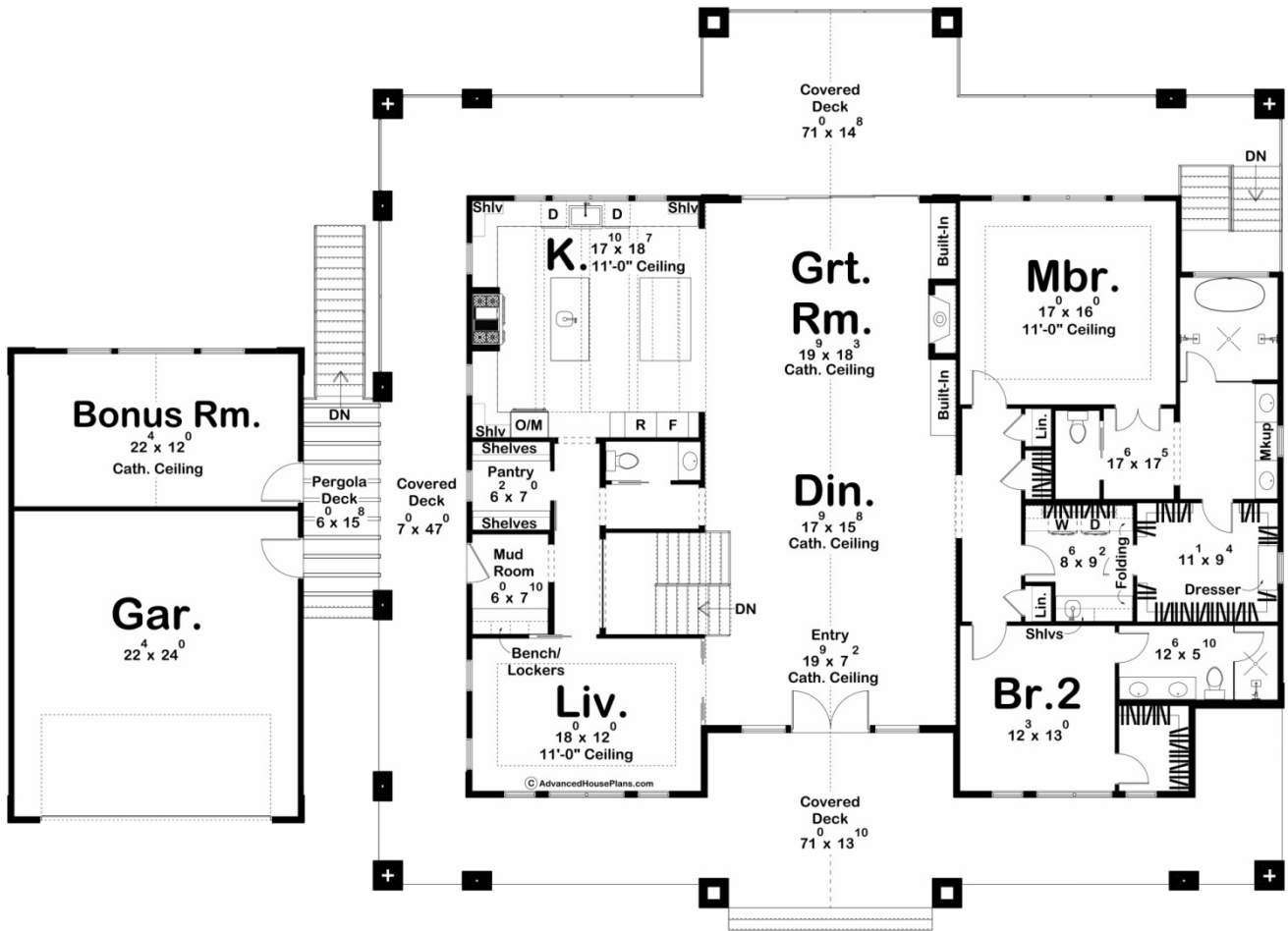
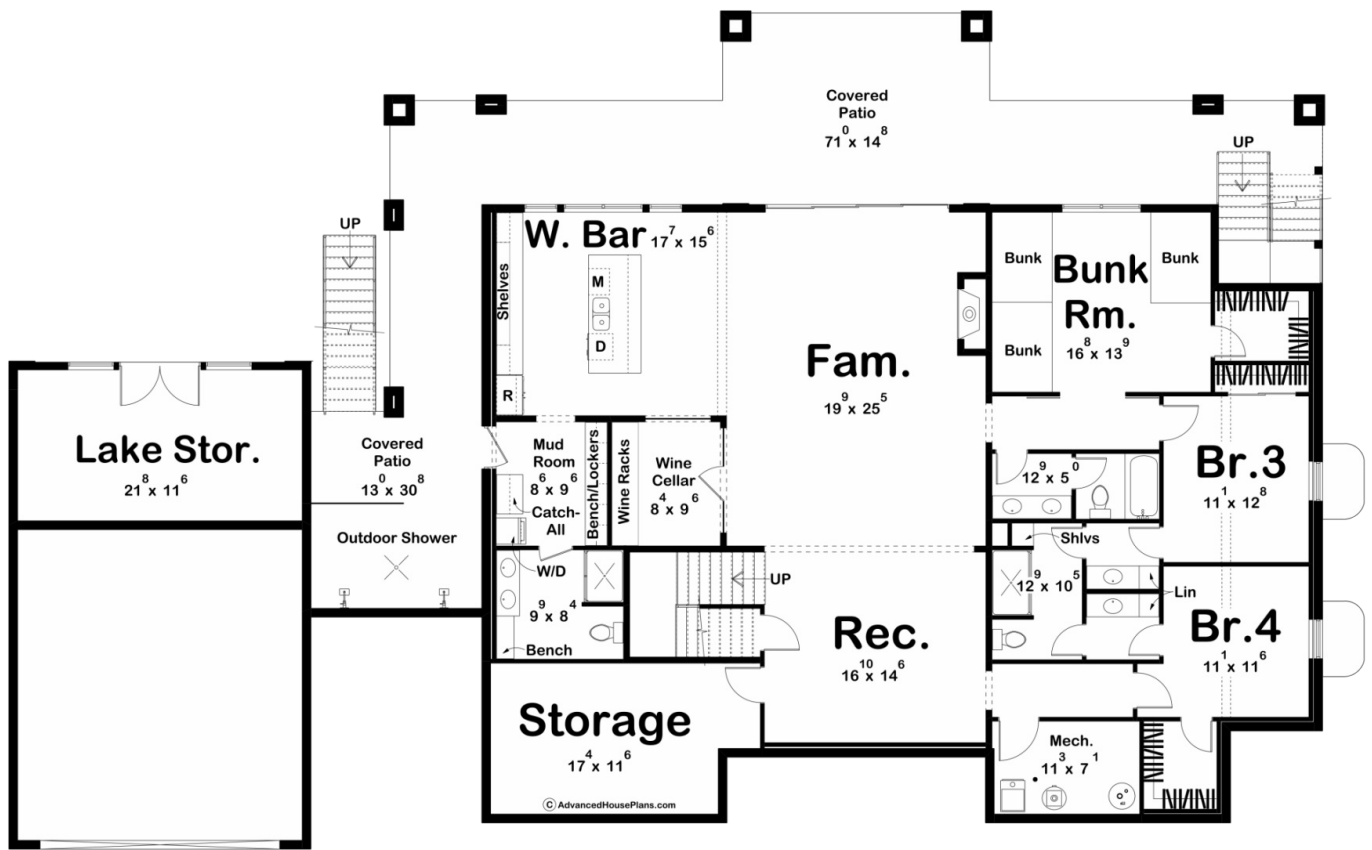




30433 - Skyline View Data Sheet

| | | | | | |
|---------------|-----------|------------|-----------|-----------------|----------------|
| 2813 SQ FT | 2 BEDS | 3 BATHS | 2 BAYS | 100' 0" WIDE | 70' 4" DEEP |
|---------------|-----------|------------|-----------|-----------------|----------------|





Construction Specs

Layout

| | |
|-------------|---|
| Bedrooms | 2 |
| Bathrooms | 3 |
| Garage Bays | 2 |

Square Footage

| | |
|---------------------|--------------|
| Main Level | 2813 Sq. Ft. |
| Covered Area | 1842 Sq. Ft. |
| Garage | 544 Sq. Ft. |
| Total Finished Area | 2813 Sq. Ft. |

Exterior Dimensions

| | |
|----------------------------------------|---------|
| Width | 100' 0" |
| Depth | 70' 4" |
| Ridge Height | 26' 4" |
| <i>Calculated from main floor line</i> | |

Default Construction Stats

Stats are unique to the individual plan.

| | |
|----------------------------|-------------------------------------------|
| Foundation Type | Walkout |
| Exterior Wall Construction | 2x4 |
| Roof Pitches | Primary 8/12, Secondary 3/12, 14/12, Flat |
| Foundation Wall Height | 10' |
| Main Wall Height | 10' |

Plan Description

Step into the ultimate mountain retreat, where luxury meets nature in perfect harmony. This exceptional mountain-style lake house is more than a home; it's a haven for those seeking tranquility, breathtaking views, and refined living. Tucked away in a private enclave, this lake house offers an unparalleled sense of seclusion. As you enter through the open-concept space, a formal living room awaits—a retreat within your sanctuary, perfect for quiet moments or intimate gatherings. The heart of this home is the expansive kitchen featuring not one but two islands. Designed for both culinary enthusiasts and entertainers, this space boasts modern appliances, ample storage, and a seamless connection to the main living area. The great room is the centerpiece, featuring a wood-burning fireplace that exudes warmth on chilly mountain evenings. The large cathedral ceiling creates an open and airy ambiance, and a wall of expansive windows provides uninterrupted views of the surrounding natural beauty. Step outside onto the covered deck, an extension of your living space, where the beauty of the outdoors seamlessly merges with your interior. Enjoy panoramic views of the lake and mountains, creating an inviting backdrop for relaxation, entertaining, and stargazing. The enclosed staircase leads you down to the lower level, enhancing the connection with nature. The walkout basement is a retreat in itself, opening onto a spacious covered patio. This versatile space offers endless possibilities for outdoor activities, gatherings, or quiet moments of contemplation. On the main level, discover two bedrooms and three bathrooms, ensuring comfort and convenience for both residents and guests. The master bedroom is a sanctuary, featuring generous proportions and large windows framing the picturesque surroundings. The master bathroom suite is a haven of luxury, including a sophisticated wet room for relaxation. The master closet seamlessly leads into the laundry room, adding a practical touch to the opulence of your private retreat. Your lake house includes a detached two-car garage, complete with a bonus space behind it. Large picture windows in the bonus space offer unparalleled views, creating an inspiring environment for work, hobbies, or simply unwinding. Below the garage, a dedicated area for lake storage ensures your recreational gear is organized and easily accessible. This mountain-style lake house isn't just a property; it's an experience—a lifestyle that celebrates the serenity of nature and the luxury of a well-designed home. Your dream retreat awaits, promising a life of comfort, elegance, and the beauty of the great outdoors.