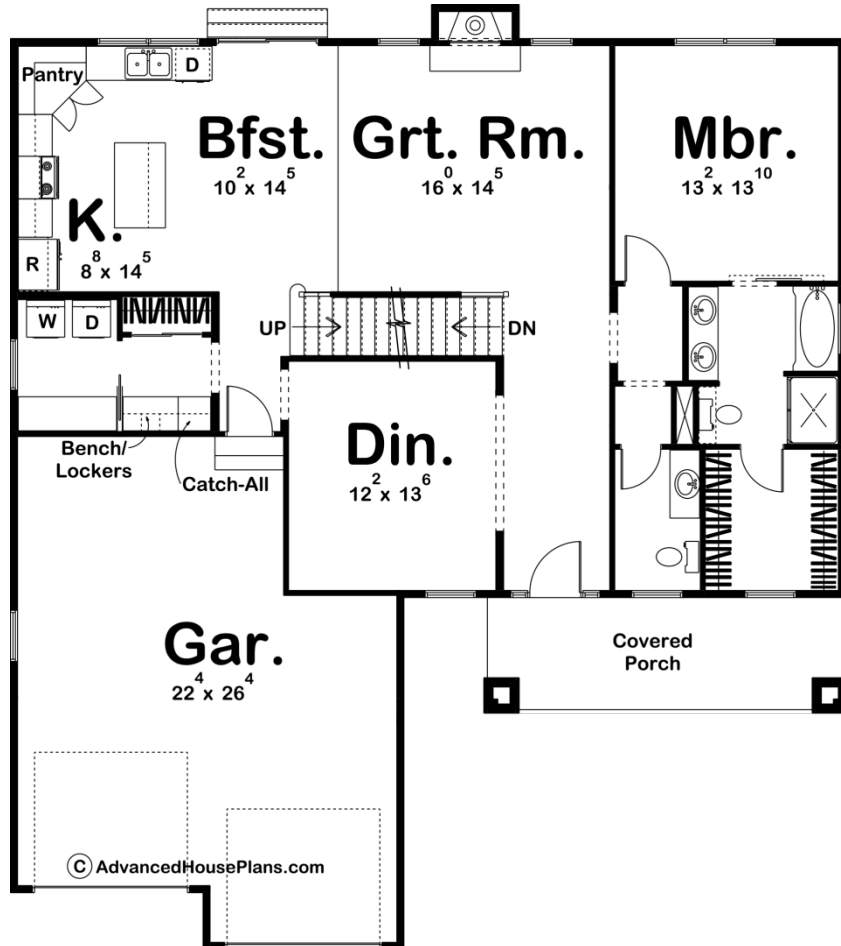


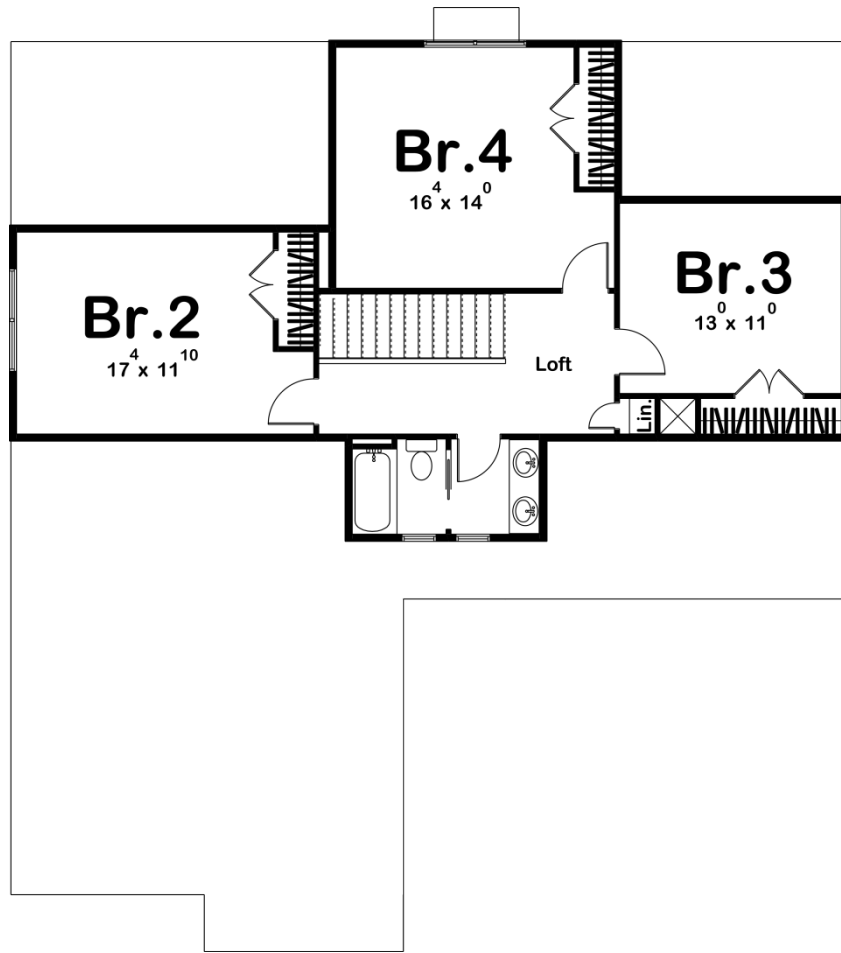


© WWW.ADVANCEDHOUSEPLANS.COM

29437 - Simpson Data Sheet

2293 SQ FT	4 BEDS	3 BATHS	2 BAYS	49' 0" WIDE	56' 0" DEEP
---------------	-----------	------------	-----------	----------------	----------------





Construction Specs

Layout

Bedrooms	4
Bathrooms	3
Garage Bays	2

Square Footage

Main Level	1451 Sq. Ft.
Second Level	842 Sq. Ft.
Garage	587 Sq. Ft.
Total Finished Area	2293 Sq. Ft.

Exterior Dimensions

Width	49' 0"
Depth	56' 0"
Ridge Height	29' 0"
<i>Calculated from main floor line</i>	

Default Construction Stats

Stats are unique to the individual plan.

Foundation Type	Basement
Exterior Wall Construction	2x4
Roof Pitches	12/12 Primary, 8/12 Secondary
Foundation Wall Height	9'
Main Wall Height	9'
Second Wall Height	8'

Plan Description

Featuring a craftsman elevation style, the Simpson is a classy 1.5 story house plan with a great floor plan to match! This 4 bedroom home has an open floor plan perfect for entertaining. Upon entering the home from the large front porch you are greeted with a multi-functional flex room that leads to the kitchen or large great room with feature fireplace. The master suite has a tub and a shower and an expansive walk-in closet. Opposite side of the home, cooking will be a breeze with a large island in the kitchen and spacious walk-in pantry to keep things organized. Upstairs, the house plan has 3 large bedrooms with a shared bath. As always any Advanced House Plans home plan can be customized to fit your needs with our alteration department. Whether you need to add another garage stall, change the front elevation, stretch the home larger or just make the home plan more affordable for your budget we can do that and more for you at Ahp.