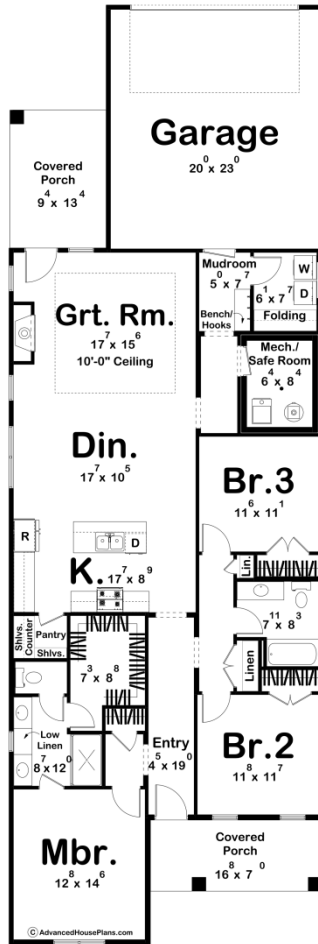




### 30553 - Silverbridge Data Sheet

1729 SQ FT	3 BEDS	2 BATHS	2 BAYS	30' 0" WIDE	90' 0" DEEP
---------------	-----------	------------	-----------	----------------	----------------



### Construction Specs

Layout

Bedrooms

Bathrooms	2
Garage Bays	2
<b>Square Footage</b>	
Main Level	1729 Sq. Ft.
Covered Area	241 Sq. Ft.
Garage	482 Sq. Ft.
Total Finished Area	1729 Sq. Ft.
<b>Exterior Dimensions</b>	
Width	30' 0"
Depth	90' 0"
<b>Default Construction Stats</b> <i>Stats are unique to the individual plan.</i>	
Foundation Type	Slab
Exterior Wall Construction	2x4
Roof Pitches	Primary 10/12, Secondary 6/12
Main Wall Height	9'

## Plan Description

Imagine a charming modern farmhouse with a mix of board and batten siding, natural stone accents, and a welcoming covered porch on the front elevation. Large windows and a glass front door adorn the exterior, flooding the interior with natural light. The simple yet elegant gable roof adds to the cozy aesthetic of the Silverbridge. Upon entering, a spacious foyer greets you, leading into the open concept main area. The great room, bright and airy with a cozy fireplace, seamlessly flows into the kitchen and dining areas, creating an ideal space for both entertaining and daily living. The modern, functional kitchen boasts a large island doubling as a breakfast bar and a walk-in pantry. Adjacent to the kitchen, the dining area offers ample space for a large dining table. The master suite serves as a spacious retreat with a large bedroom overlooking the front yard. The en-suite bathroom includes dual vanities, a walk-in shower, and a walk-in closet. Two additional bedrooms provide flexibility for use as guest rooms, children's rooms, or even a home office. A shared bathroom, conveniently located between the secondary bedrooms, features a tub/shower combo and a single vanity. The 2-car rear garage preserves the curb appeal of the front elevation. This home also includes a mudroom space connecting to the main living area. Ideal for those with a narrow lot, the Silverbridge perfectly balances style, comfort, and functionality, making it an ideal choice for modern living.