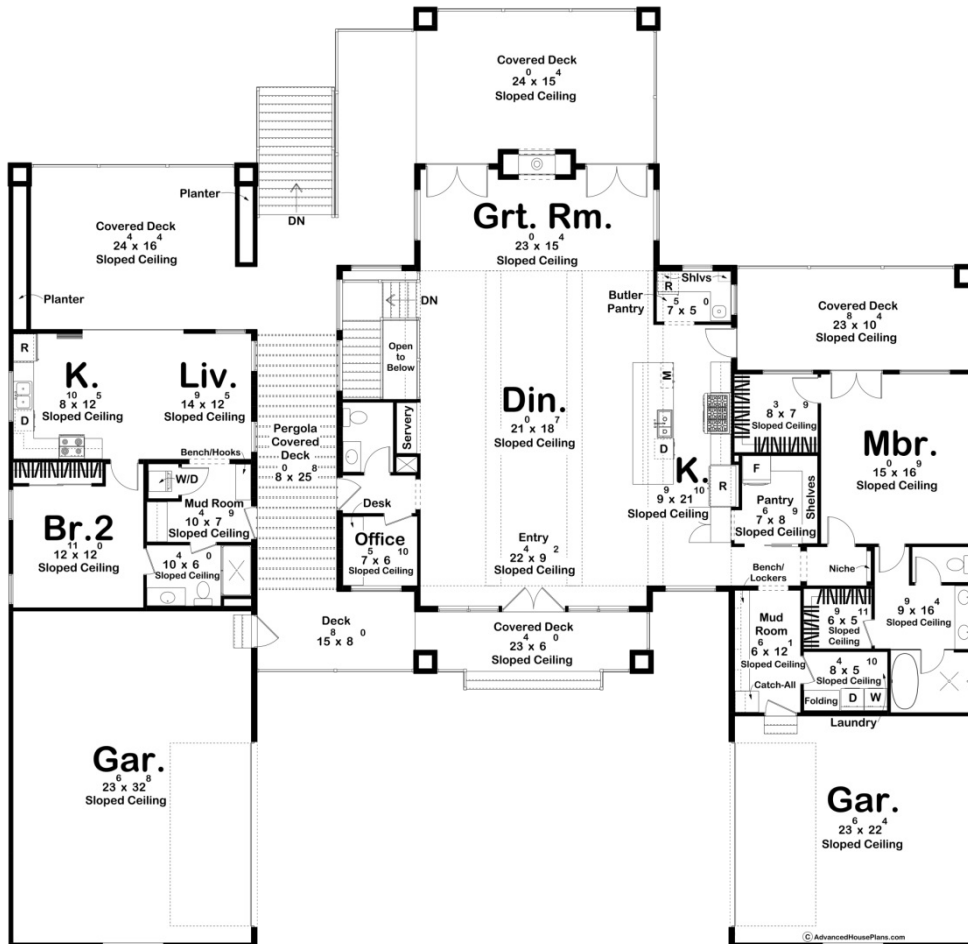
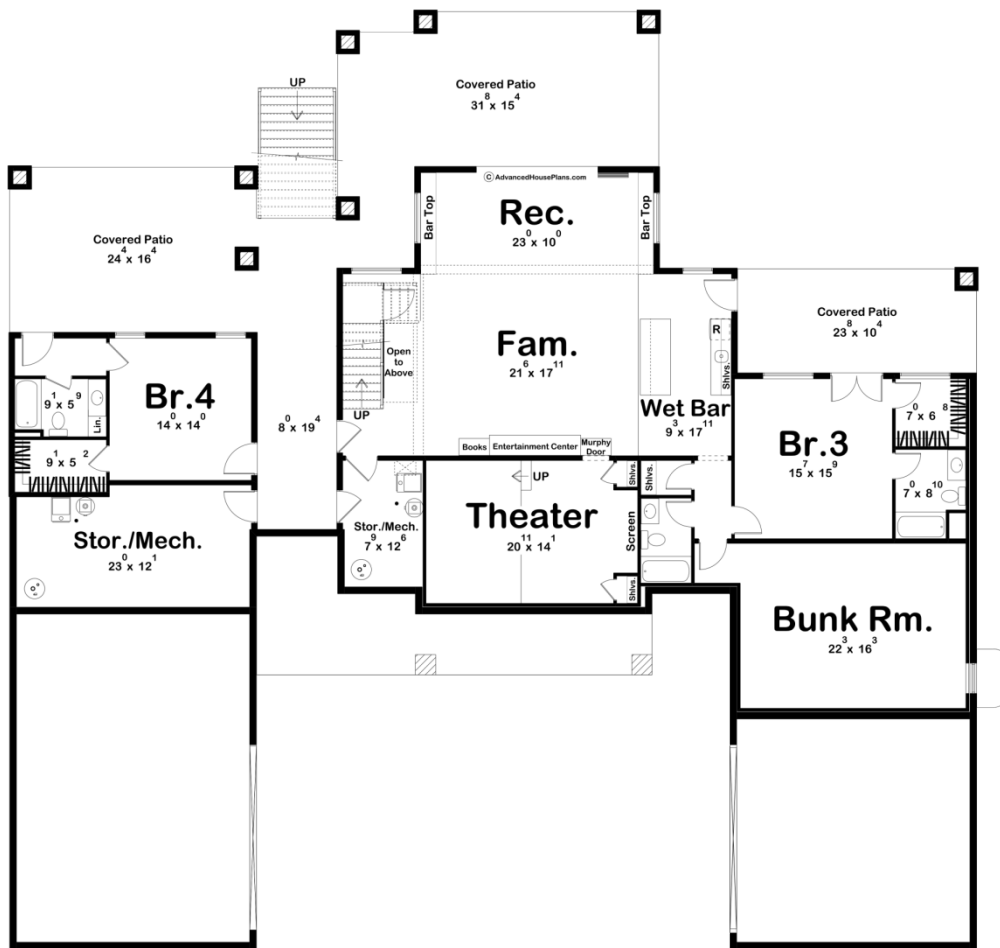




30434 - Sequoia Data Sheet

2921 SQ FT	2 BEDS	3 BATHS	4 BAYS	95' 4" WIDE	92' 4" DEEP
---------------	-----------	------------	-----------	----------------	----------------





Construction Specs

Layout

Bedrooms	2
Bathrooms	3
Garage Bays	4

Square Footage

Main Level	2921 Sq. Ft.
Covered Area	1001 Sq. Ft.
Garage	1355 Sq. Ft.
Total Finished Area	2921 Sq. Ft.

Exterior Dimensions

Width	95' 4"
Depth	92' 4"
Ridge Height	20' 3"
<i>Calculated from main floor line</i>	

Default Construction Stats

Stats are unique to the individual plan.

Foundation Type	Walkout
Exterior Wall Construction	2x4
Roof Pitches	Primary 2/12
Foundation Wall Height	9'
Main Wall Height	10'

Plan Description

Nestled amid the picturesque embrace of nature, this one-story modern mountain lake house is a harmonious blend of contemporary design and rustic charm. As you approach, the exterior showcases a distinctive single-sloped roof that gracefully slopes down, creating a dynamic and modern silhouette against the backdrop of towering trees and serene lake views. The entrance welcomes you with a sense of openness, as the wide front door leads into a dining room that seamlessly connects to the heart of the home. The interior boasts a sprawling open floor plan, characterized by airy spaces, large windows, and carefully chosen natural materials that bring the outdoors in. The main living area, featuring a cozy fireplace and panoramic views of the surrounding landscape, serves as the central gathering point for family and friends. The master suite is a sanctuary of tranquility, featuring large windows that frame the natural beauty outside. A luxurious en-suite bathroom and two walk-in closets complete this private retreat. A thoughtfully designed guest suite offers comfort and privacy for visitors, ensuring a welcoming experience. This modern mountain lake house caters to the practical needs of its residents with two separate garages, providing ample space for vehicles and storage. The backyard oasis is a haven of relaxation, featuring a carefully landscaped garden, a fire pit for cozy evenings, and a pathway leading to the private lakefront. Whether it's enjoying a morning coffee on the deck, hosting a barbecue with friends, or simply unwinding by the water's edge, this home offers an idyllic retreat where modern luxury and natural beauty coalesce.