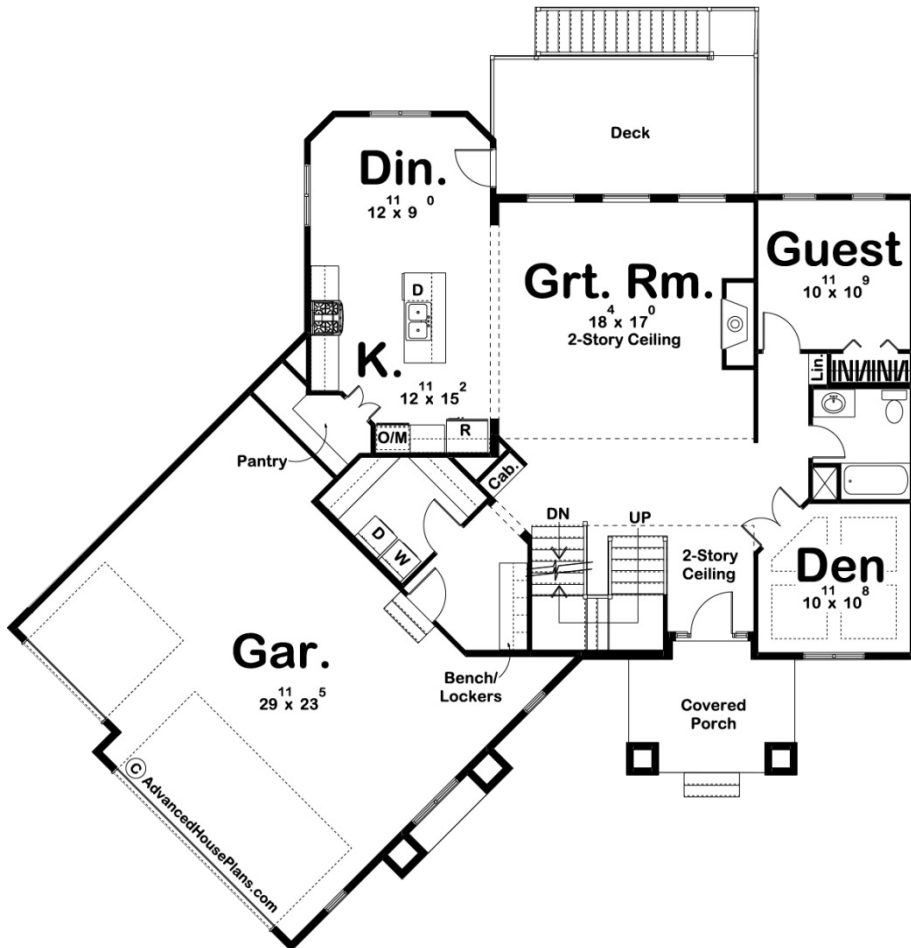
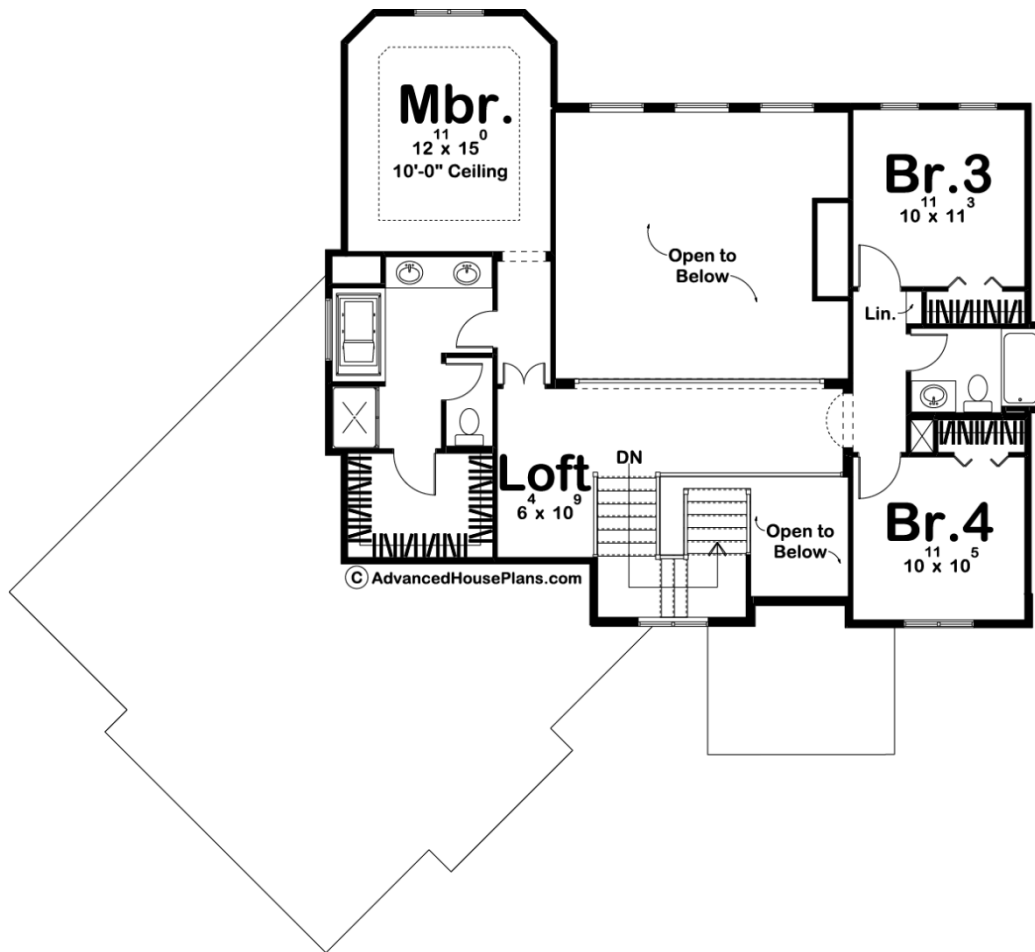




29041 - Sedona Data Sheet

2502 SQ FT	4 BEDS	3 BATHS	3 BAYS	66' 0" WIDE	61' 0" DEEP
---------------	-----------	------------	-----------	----------------	----------------





Construction Specs

Layout

Bedrooms	4
Bathrooms	3
Garage Bays	3

Square Footage

Main Level	1466 Sq. Ft.
Second Level	1036 Sq. Ft.
Garage	745 Sq. Ft.
Total Finished Area	2502 Sq. Ft.

Exterior Dimensions

Width	66' 0"
Depth	61' 0"
Ridge Height	30' 0"
<i>Calculated from main floor line</i>	

Default Construction Stats

Stats are unique to the individual plan.

Foundation Type	Basement
Exterior Wall Construction	2x4
Roof Pitches	6/12
Foundation Wall Height	9'
Main Wall Height	9'
Second Wall Height	9'

Plan Description

A tasteful array of Mediterranean-style details defines the look of this spacious 2-story house plan. An angled 3 car garage and classic, arched covered porch, grants passage to the impressive 2-story entry area. Under the 2 story catwalk, a great room with fireplace welcomes guests. Entertaining is easy with the open arrangement of the kitchen and dining area with access to a deck. Practicality continues in the mudroom with its built-in bench, lockers and adjoining laundry room. Opposite on the main floor plan you will see the guest suite with a walk-up closet and it shares the hall bath. The second floor offers the master suite which includes a bath with dual vanities, walk-in shower, compartmented toilet and walk-in closet. On the opposite side after you cross over the 2 story catwalk which offers expansive views of the great room and entry is the other bedrooms. Bedrooms 3 and 4 include walk-up closets and share a hall bath