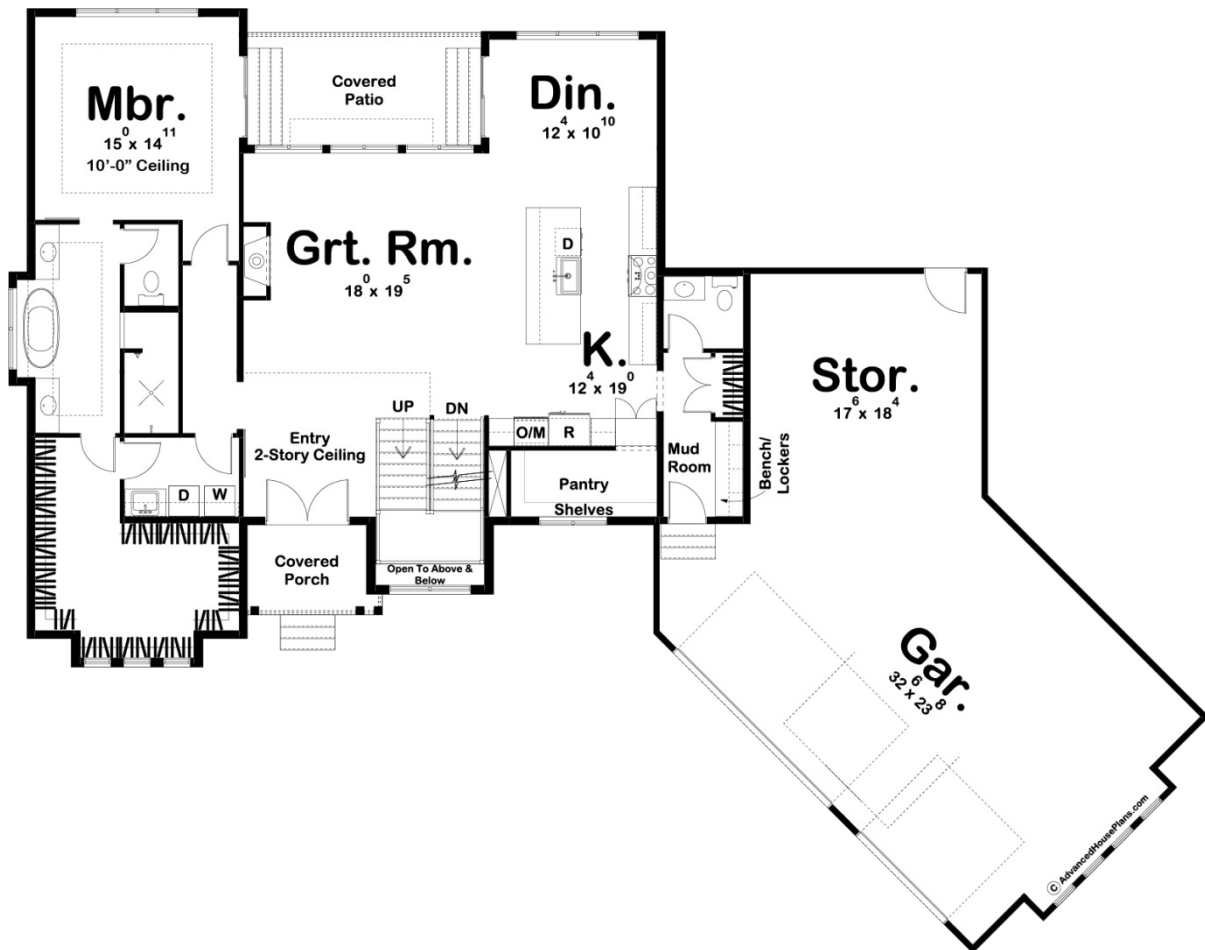


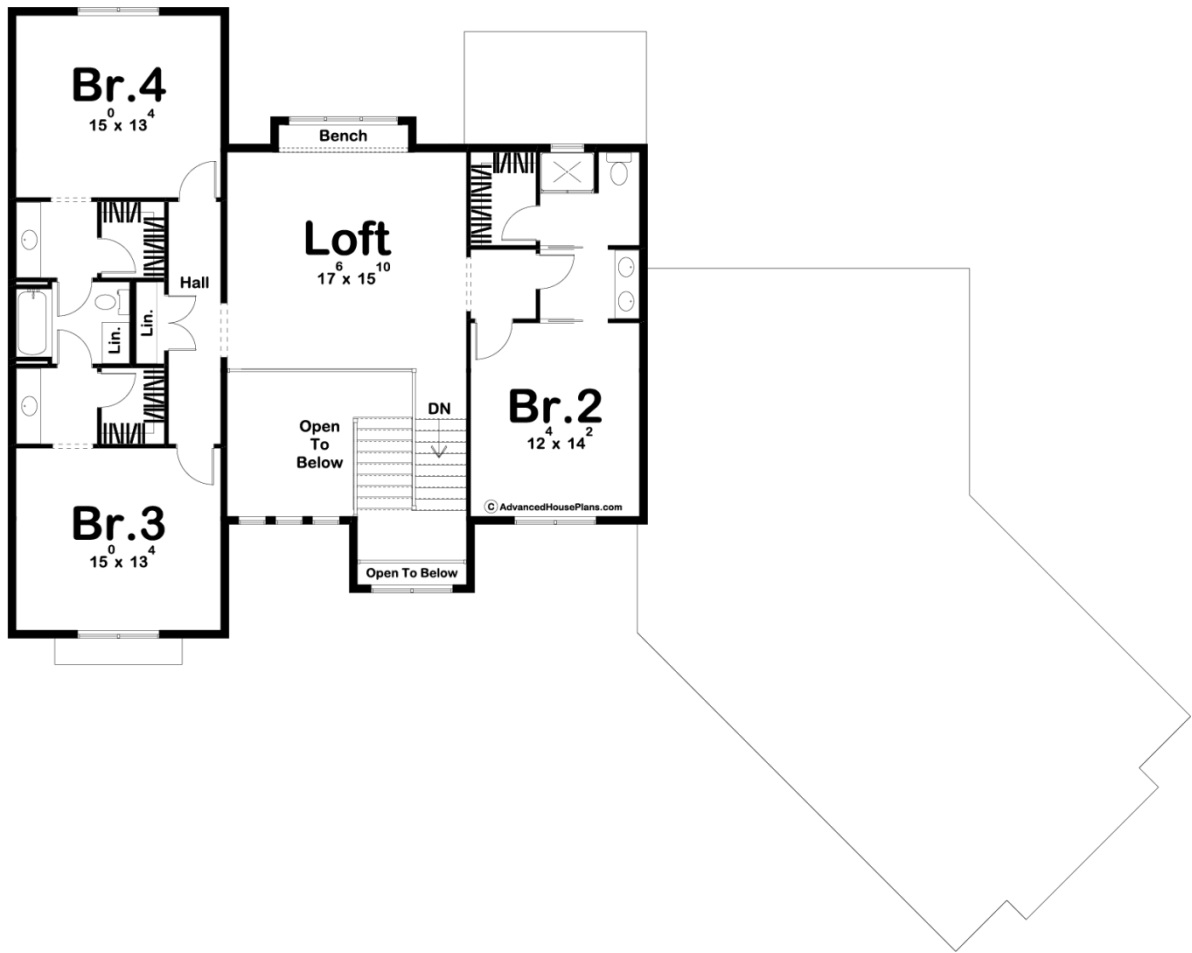


**29775 - Savannah Falls Data Sheet**

3292 SQ FT	4 BEDS	4 BATHS	3 BAYS	87' 11" WIDE	69' 0" DEEP
---------------	-----------	------------	-----------	-----------------	----------------



© advancedhouseplans.com



## Construction Specs

### Layout

Bedrooms	4
Bathrooms	4
Garage Bays	3

### Square Footage

Main Level	1888 Sq. Ft.
Second Level	1404 Sq. Ft.
Garage	1103 Sq. Ft.
Total Finished Area	3292 Sq. Ft.

### Exterior Dimensions

Width	87' 11"
Depth	69' 0"

### Default Construction Stats

*Stats are unique to the individual plan.*

Foundation Type	Basement
-----------------	----------

Exterior Wall Construction	2x4
Roof Pitches	8/12 Primary, 6/12 10/12 Secondary
Foundation Wall Height	9'
Main Wall Height	10'
Second Wall Height	9'

## Plan Description

The Savannah Falls plan is a Modern Farmhouse masterpiece. The exterior of this home combines board and batten siding, metal roofing, and stone to give this home the timeless modern farmhouse look. The large angled 3 car garage with storage provides a great place to store your cars and your toys. Once you walk in through the covered porch, you'll find yourself in a grand 2 story entry. The great room is warmed by a fireplace and lets in tons of natural light through the large windows that look out to the covered patio. This home has a wonderful kitchen that includes a massive walk-in pantry and a large island with a snack bar. The master suite on this home is conveniently located on the main level and includes a massive walk-in closet that has access to the laundry room as well as a soaking tub, his/her vanities, a walk-in shower, and an enclosed toilet. Just up the stairs, you will find 3 bedrooms and a wonderful loft space with a built-in bench. Bedroom 2 has access to its own bathroom with dual vanities and a walk-in closet. Bedrooms 3 and 4 share an amazing jack and jill bathroom and each has its own walk-in closet.