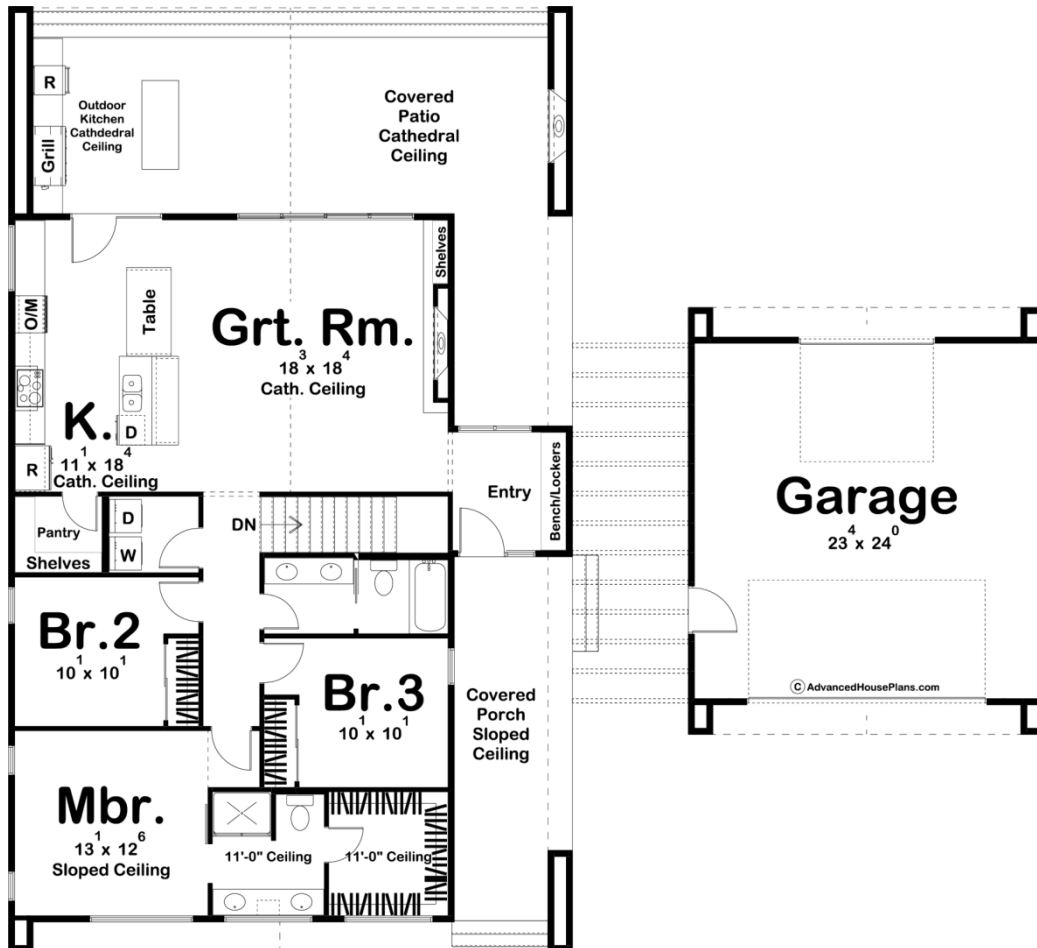




**29955 - Santa Cruz Data Sheet**

1499 SQ FT	3 BEDS	2 BATHS	2 BAYS	70' 0" WIDE	64' 0" DEEP
---------------	-----------	------------	-----------	----------------	----------------



**Construction Specs**

Layout

Bedrooms

Bathrooms	2
-----------	---

Garage Bays	2
-------------	---

### Square Footage

Main Level	1499 Sq. Ft.
------------	--------------

Covered Area	777 Sq. Ft.
--------------	-------------

Garage	592 Sq. Ft.
--------	-------------

Total Finished Area	1499 Sq. Ft.
---------------------	--------------

### Exterior Dimensions

Width	70' 0"
-------	--------

Depth	64' 0"
-------	--------

Ridge Height	24' 0"
<i>Calculated from main floor line</i>	

### Default Construction Stats

*Stats are unique to the individual plan.*

Foundation Type	Basement
-----------------	----------

Exterior Wall Construction	2x4
----------------------------	-----

Roof Pitches	8/12 Primary
--------------	--------------

Foundation Wall Height	9'
------------------------	----

Main Wall Height	9'
------------------	----

## Plan Description

The Santa Cruz plan is a beautiful ultra-modern style house plan. The exterior combines white stucco and large overhangs with a modern covered porch. Just inside the covered front porch, you'll notice a wide-open floor plan. The kitchen, and great room flow seamlessly together. The kitchen includes a wonderful island with a built-in dining room table and a walk-in pantry. The great room is warmed by a fireplace that is flanked by built-in bookshelves and lies under a soaring cathedral ceiling. Large sliding glass doors lead to a large covered patio with an amazing outdoor kitchen. On the main floor, you'll find 3 bedrooms including the master suite. The master bathroom includes his/her vanities, a walk-in shower, and a walk-in closet. Bedrooms 2 and 3 share a centrally located hall bathroom with double vanities. The home's pull through 2 car garage accesses the home through a convenient mudroom.