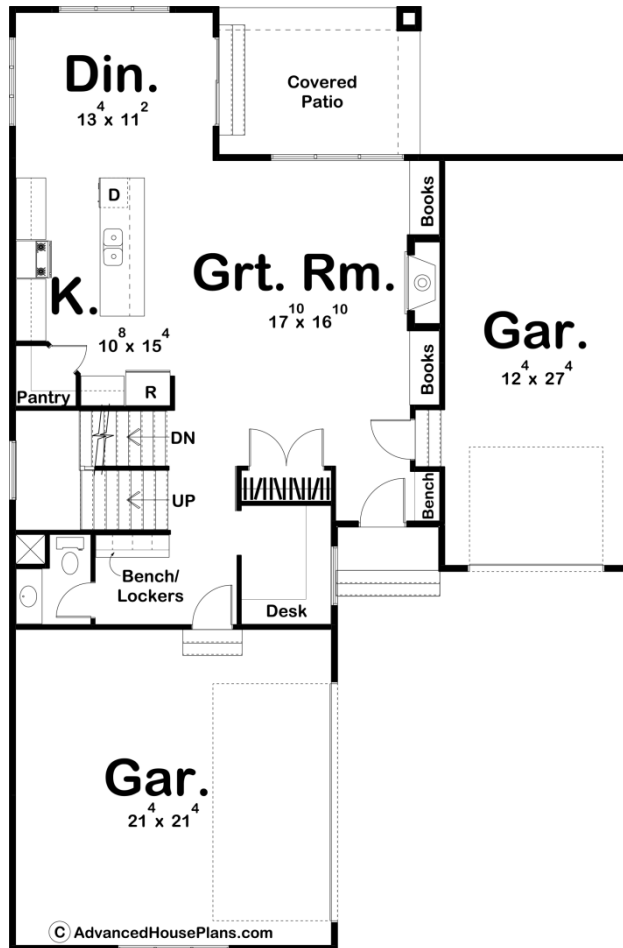
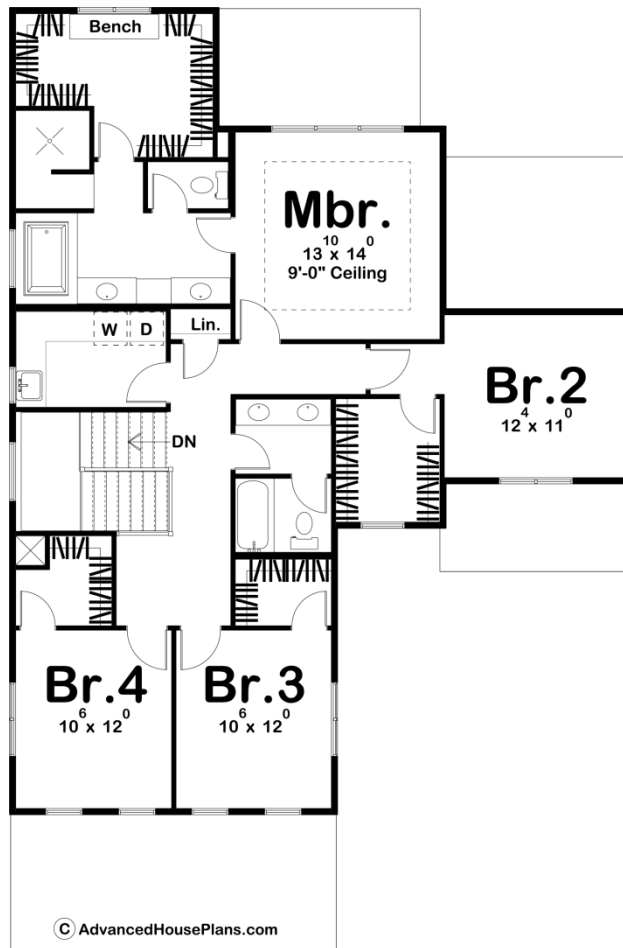




29650 - Saguaro Data Sheet

2417 SQ FT	4 BEDS	3 BATHS	3 BAYS	42' 0" WIDE	64' 0" DEEP
---------------	-----------	------------	-----------	----------------	----------------





Construction Specs

Layout

Bedrooms	4
Bathrooms	3
Garage Bays	3

Square Footage

Main Level	1023 Sq. Ft.
Second Level	1394 Sq. Ft.
Garage	839 Sq. Ft.
Total Finished Area	2417 Sq. Ft.

Exterior Dimensions

Width	42' 0"
Depth	64' 0"
Ridge Height	26' 0"
<i>Calculated from main floor line</i>	

Default Construction Stats

Stats are unique to the individual plan.

Foundation Type	Basement
Exterior Wall Construction	2x4
Roof Pitches	4/12 Primary
Foundation Wall Height	9'
Main Wall Height	9'
Second Wall Height	8'

Plan Description

Gracefully arched details are repeated throughout the exterior of this 2,417 sq. ft., Mediterranean-style, 2 Story house plan. The sense of open space makes an immediate impression upon entering the home. The large great room is warmed by a fireplace that is flanked by built-in bookshelves. In the kitchen, you will find an island work area with breakfast bar and a large walk-in pantry. Just off the kitchen is a large dining room that leads to the covered patio. Upstairs you will find the large master suite that includes a luxurious bathroom that has his/her vanities, a soaking tub, a walk-in shower and a large walk-in closet with a bench. Just outside the master suite is a functional laundry area with a soaking sink and folding counter. Bedrooms 2, 3 and 4 each have their own walk-in closet and share a conveniently located bathroom.