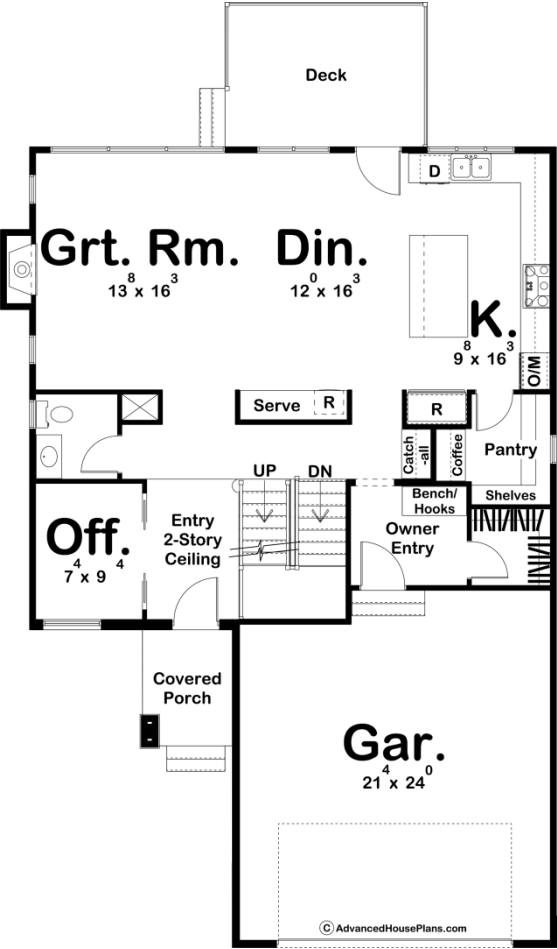
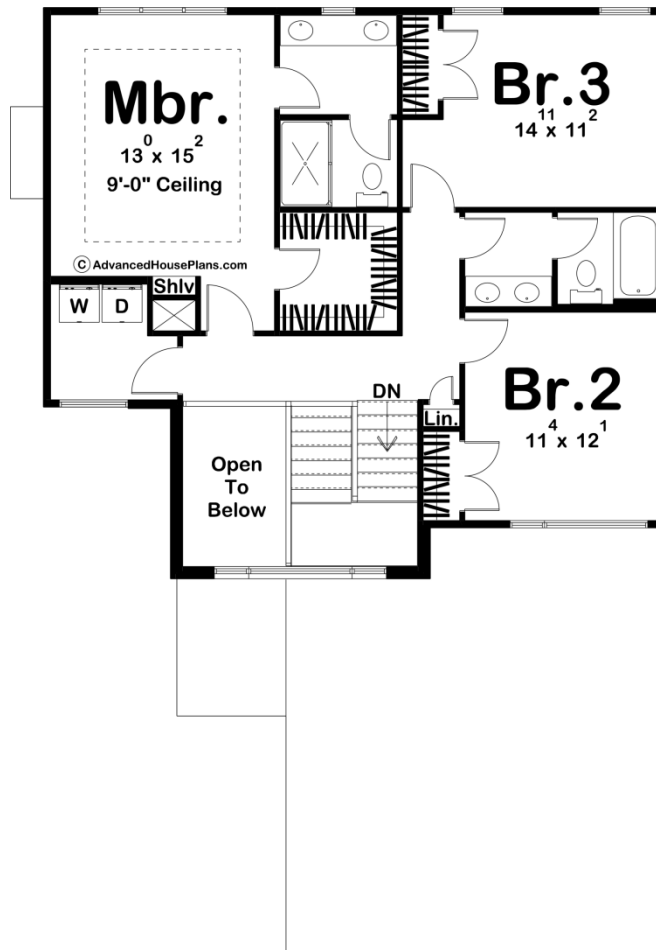




29884 - Russell Data Sheet

2077 SQ FT	3 BEDS	3 BATHS	2 BAYS	38' 0" WIDE	55' 0" DEEP
---------------	-----------	------------	-----------	----------------	----------------





Construction Specs

Layout

Bedrooms	3
Bathrooms	3
Garage Bays	2

Square Footage

Main Level	1143 Sq. Ft.
Second Level	934 Sq. Ft.
Garage	517 Sq. Ft.
Total Finished Area	2077 Sq. Ft.

Exterior Dimensions

Width	38' 0"
Depth	55' 0"

Default Construction Stats

Stats are unique to the individual plan.

Foundation Type	Basement
-----------------	----------

Exterior Wall Construction	2x4
Roof Pitches	4/12 Primary
Foundation Wall Height	9'
Main Wall Height	9'
Second Wall Height	8'

Plan Description

The Russell plan is an elegant Modern Prairie style house plan. The exterior is highlighted by a combination of stone, brick, stucco, and cedar that create a wonderful facade. Inside the home, a pocket office is situated right off of the 2 story entry. Further, into the home, the great room, dining room, and kitchen are arranged in a wonderful open floor plan. The kitchen includes a large kitchen island and a walk-in pantry with a coffee bar. A deck is accessed off the rear of the home for your outdoor entertainment. The second floor includes 3 bedrooms including the master suite that features a walk-in closet and his/her vanities.