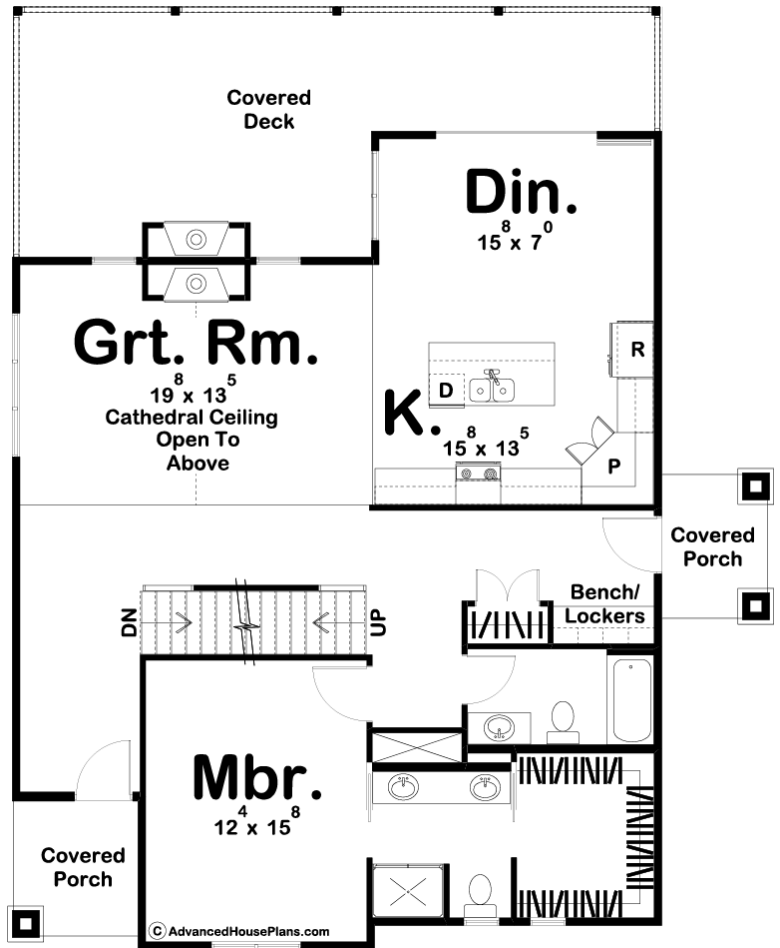
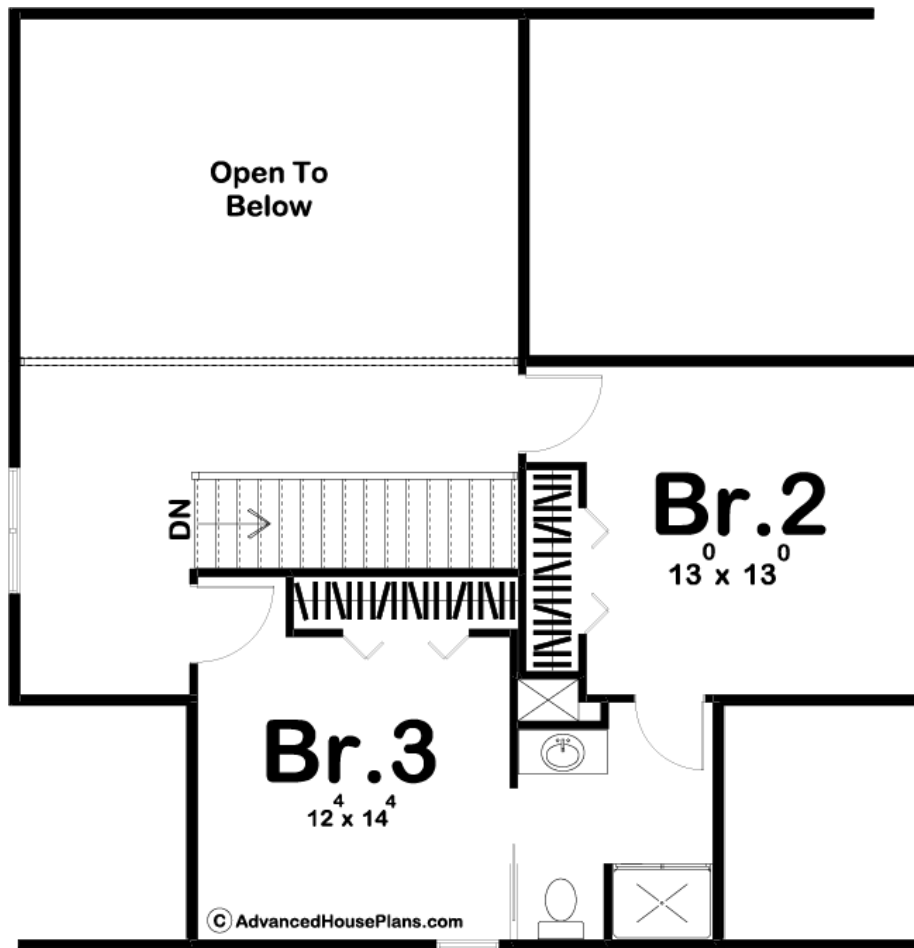




**29280 - Richmond Creek Data Sheet**

|               |           |            |           |                |                |
|---------------|-----------|------------|-----------|----------------|----------------|
| 2062<br>SQ FT | 3<br>BEDS | 3<br>BATHS | 0<br>BAYS | 42' 0"<br>WIDE | 53' 0"<br>DEEP |
|---------------|-----------|------------|-----------|----------------|----------------|





## Construction Specs

### Layout

|           |   |
|-----------|---|
| Bedrooms  | 3 |
| Bathrooms | 3 |

### Square Footage

|                     |              |
|---------------------|--------------|
| Main Level          | 1412 Sq. Ft. |
| Second Level        | 650 Sq. Ft.  |
| Total Finished Area | 2062 Sq. Ft. |

### Exterior Dimensions

|  |        |
|--|--------|
| Width  | 42' 0" |
| Depth  | 53' 0" |
| Ridge Height<br><i>Calculated from main floor line</i> | 30'    |

### Default Construction Stats

*Stats are unique to the individual plan.*

|                 |          |
|-----------------|----------|
| Foundation Type | Basement |
|-----------------|----------|

|                            |                               |
|----------------------------|-------------------------------|
| Exterior Wall Construction | 2x4                           |
| Roof Pitches               | 12/12 Primary, 4/12 Secondary |
| Foundation Wall Height     | 9'                            |
| Main Wall Height           | 9'                            |
| Second Wall Height         | 8'                            |

## Plan Description

Featuring a classic craftsman exterior facade, Richmond Creek is a stunning 1.5 story house plan with a great floor plan to match! The exterior features board and batten siding and thinset stone veneer. This 3 bedroom home plan has a unique open floor plan perfect for entertaining. A covered deck with a fireplace makes a nice place to nestle in with your morning coffee. On the main floor, the master suite has his/her vanities and roomy closet. Cooking will be a breeze with a large island in the kitchen and spacious walk-in pantry to keep things organized. The large great room is warmed by a fireplace and has a 2 story cathedral ceiling. Upstairs bedrooms 2 and 3 share a bathroom. As always any Advanced House Plans home plan can be customized to fit your needs with our alteration department. Whether you need to add another garage stall, change the front elevation, stretch the home larger or just make the home plan more affordable for your budget we can do that and more for you at Ahp.