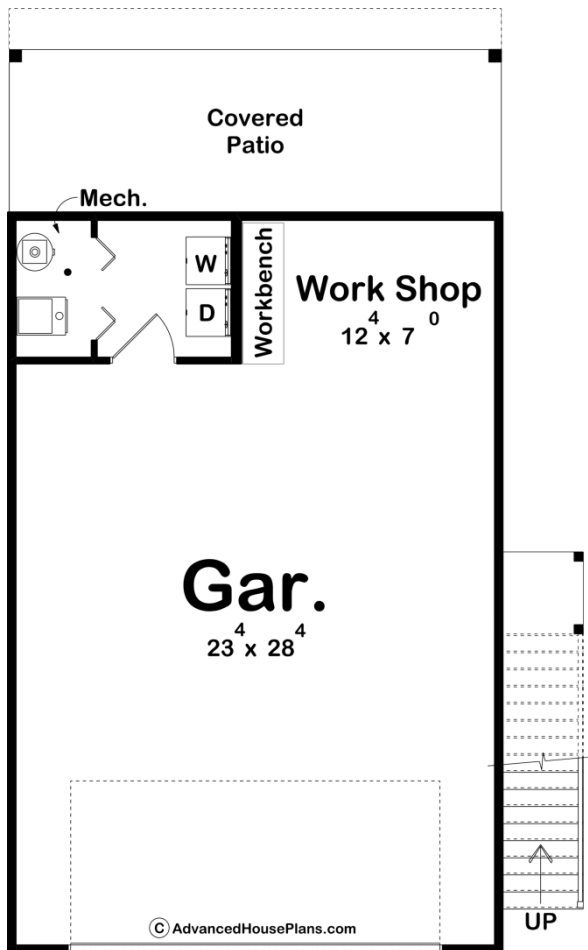
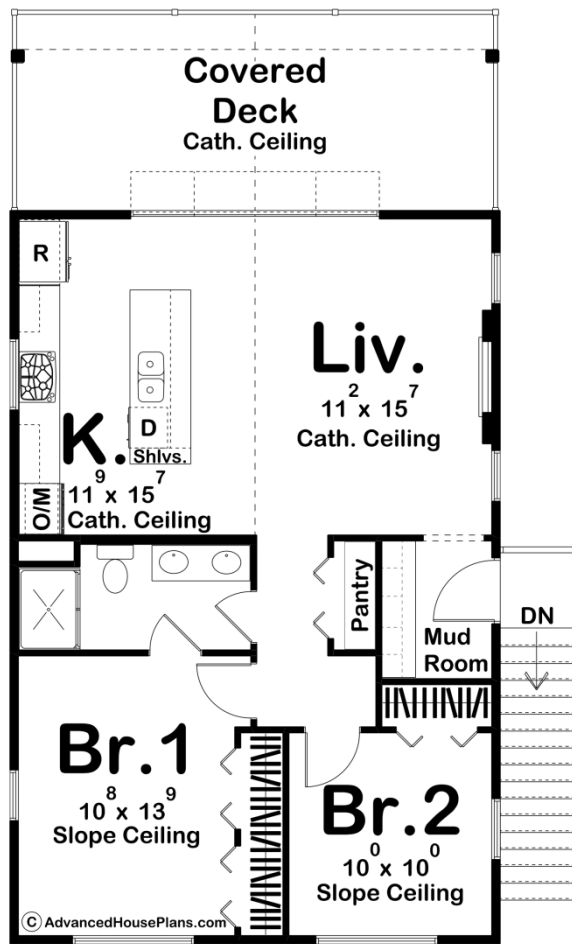




### 30107 - Reed Point Data Sheet

915 SQ FT	2 BEDS	1 BATHS	2 BAYS	28' 0" WIDE	46' 0" DEEP
--------------	-----------	------------	-----------	----------------	----------------





## Construction Specs

### Layout

Bedrooms	2
Bathrooms	1
Garage Bays	2

### Square Footage

Main Level	52 Sq. Ft.
Second Level	863 Sq. Ft.
Garage	781 Sq. Ft.
Total Finished Area	915 Sq. Ft.

### Exterior Dimensions

Width	28' 0"
Depth	46' 0"

### Default Construction Stats

*Stats are unique to the individual plan.*

Foundation Type	Slab
-----------------	------

Exterior Wall Construction	2x4
Roof Pitches	6/12 Primary
Main Wall Height	9'
Second Wall Height	8'

## Plan Description

If you are looking for an apartment garage that will give you a unique blend of textures, look no further than the Reed Point plan. A mixture of stone, siding, and wood gives this garage a modern rustic feel. On the main level, you find a 2 car garage that includes a workshop with a built-in workbench. Upstairs you'll find a wonderfully efficient 2 bedroom apartment. The apartments open floor plan makes great use of the space. The kitchen includes a large island with a snack bar. Both bedrooms share a bathroom with a double vanity.