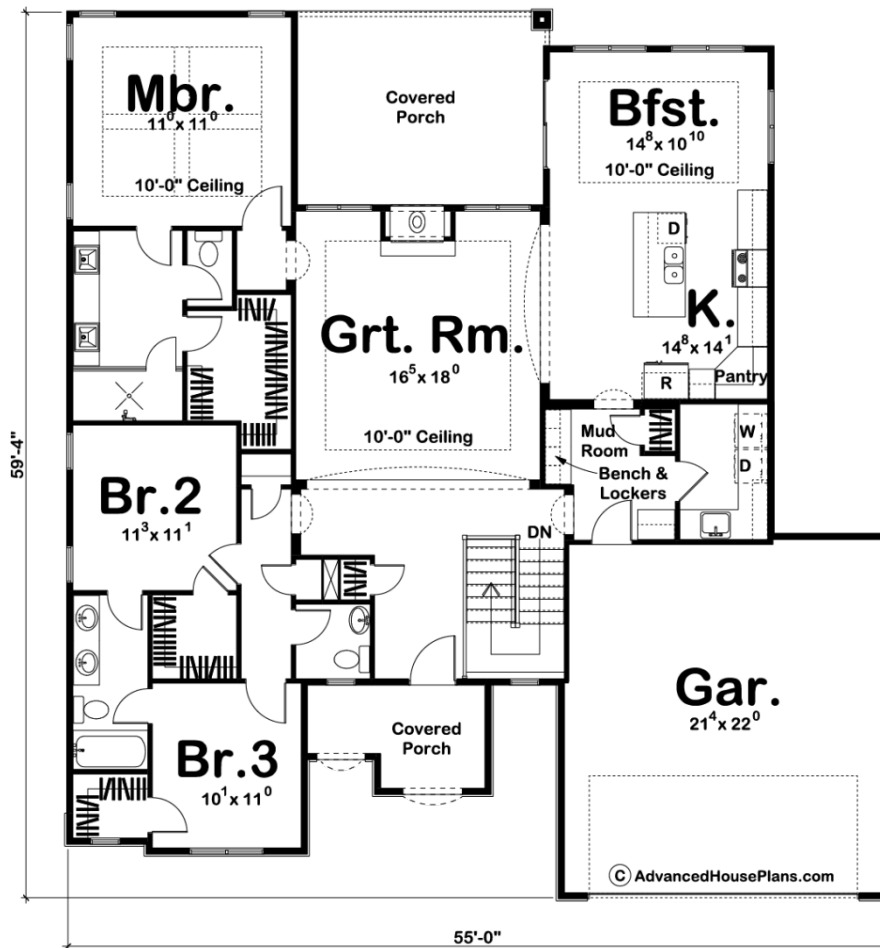




**29323 - Puckett Data Sheet**

1927 SQ FT	3 BEDS	3 BATHS	2 BAYS	55' 0" WIDE	60' 0" DEEP
---------------	-----------	------------	-----------	----------------	----------------



**Construction Specs**

Layout

Bedrooms

Bathrooms	3
Garage Bays	2
<b>Square Footage</b>	
Main Level	1927 Sq. Ft.
Garage	522 Sq. Ft.
Total Finished Area	1927 Sq. Ft.
<b>Exterior Dimensions</b>	
Width	55' 0"
Depth	60' 0"
Ridge Height <i>Calculated from main floor line</i>	23' 0"
<b>Default Construction Stats</b> <i>Stats are unique to the individual plan.</i>	
Foundation Type	Basement
Exterior Wall Construction	2x4
Roof Pitches	6/12
Foundation Wall Height	9'
Main Wall Height	9'

## Plan Description

Mediterranean-style details harmonize with a tasteful blend of textures on this 1,928 sq. ft., 1-story house plan. The front door is sheltered from the elements by a deep front porch. Upon entering the home, guests are treated to long views toward the great room's fireplace and spacious rear covered porch beyond. A wide arched opening connects the great room with the kitchen and breakfast area, which accesses the rear covered porch to expand entertaining options. Just off the kitchen, a utility area includes a laundry with soaking sink, and an adjoining mudroom complete with coat closet, bench, and lockers. The mudroom intercepts clutter and messes that might otherwise be tracked in from the 2-car garage. Sleeping quarters all reside on one side of the home, with the master suite positioned for privacy at the rear. The suite's bath includes his and her vanities, walk-in shower, compartmented toilet and a walk-in closet. Bedrooms 2 and 3 also have walk-in closets and share a Jack-n-Jill bath.