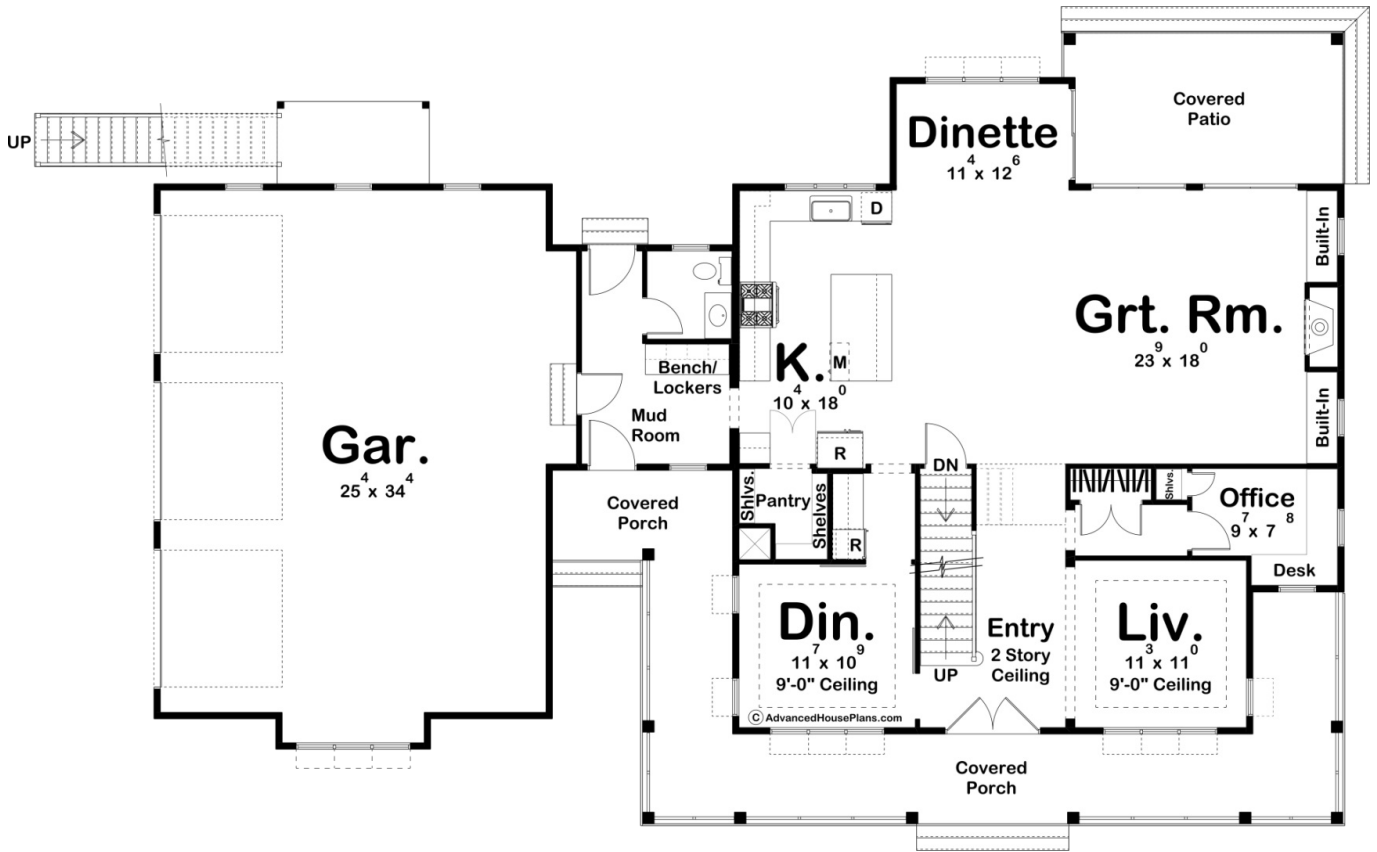
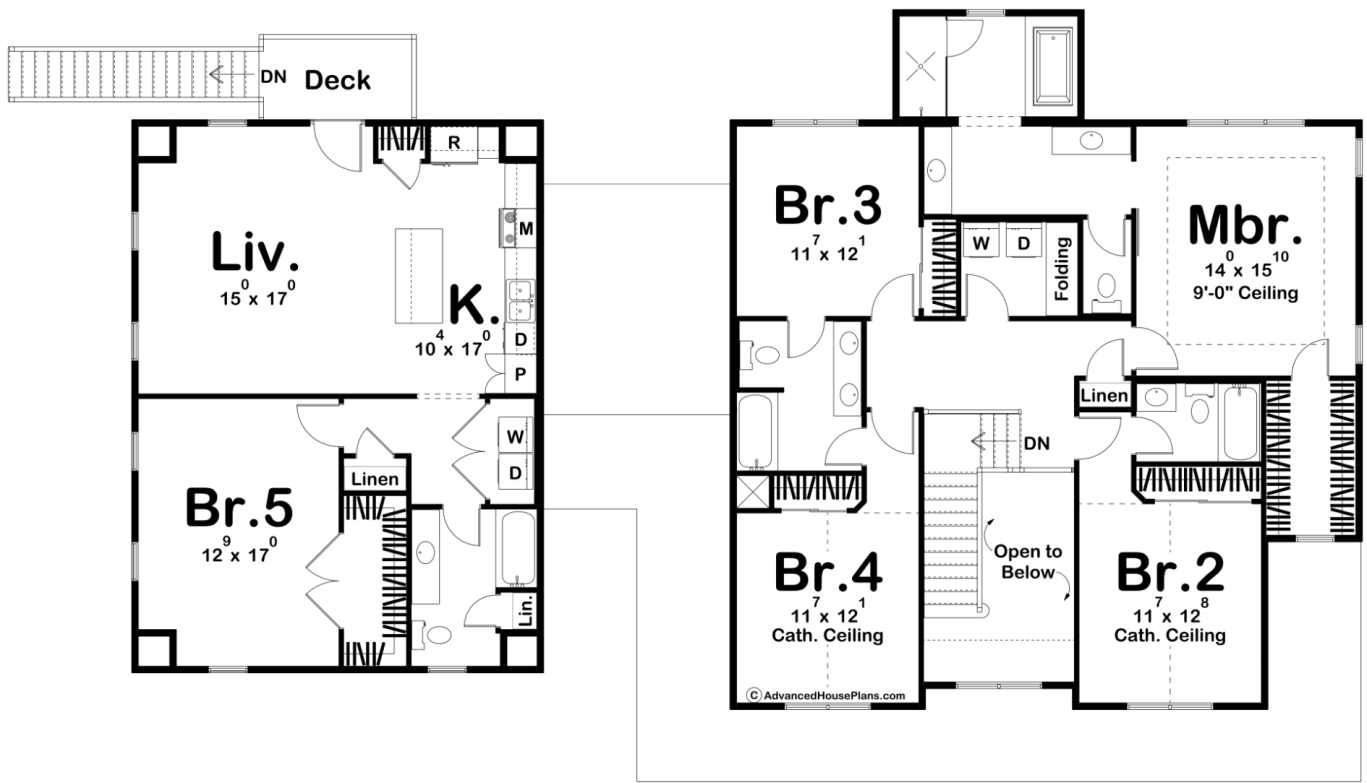




**30104 - Pine Ridge Data Sheet**

3880 SQ FT	5 BEDS	5 BATHS	3 BAYS	78' 0" WIDE	52' 0" DEEP
---------------	-----------	------------	-----------	----------------	----------------





## Construction Specs

### Layout

Bedrooms	5
Bathrooms	5
Garage Bays	3

### Square Footage

Main Level	1620 Sq. Ft.
Second Level	2260 Sq. Ft.
Covered Area	618 Sq. Ft.
Garage	954 Sq. Ft.
Total Finished Area	3880 Sq. Ft.

### Exterior Dimensions

Width	78' 0"
Depth	52' 0"
Ridge Height	31'
<i>Calculated from main floor line</i>	

## Default Construction Stats

*Stats are unique to the individual plan.*

Foundation Type	Basement
Exterior Wall Construction	2x4
Roof Pitches	8/12 Primary, 4/12 6/12 Secondary
Foundation Wall Height	9'
Main Wall Height	9'
Second Wall Height	8'

## Plan Description

If you are looking for curb appeal, look no further than the Pine Ridge plan. The exterior screams modern farmhouse with its wrap-around porch and attached side-load garage. Inside, the entryway is flanked by both the dining room and living room and has a 2 story ceiling. Further, into the home, an open kitchen and great room provide a great space for entertaining guests. The kitchen includes a farm sink, an island with a flush snack bar, and a walk-in pantry. The great room is warmed by a beautiful brick fireplace that is flanked by built-in cabinets. A wonderful dinette leads to a covered patio that is perfect for outdoor entertainment. On the upper level of this 2 story house, you will find 4 amazing bedrooms. The master suite includes a beautiful master bathroom complete with a walk-in shower, his/her vanities, and a whirlpool tub. Bedroom 2 has its own bathroom while bedrooms 3 and 4 share a convenient Jack and Jill bath. Back on the main level, the absolutely beautiful 3-car garage includes ample space. It accesses the home through a mudroom, complete with bench, lockers and a coat closet. A full 1 bedroom apartment can be found above the garage. The apartment includes a living area, a full kitchen with an island, a laundry room, a full bathroom, and a walk-in closet.