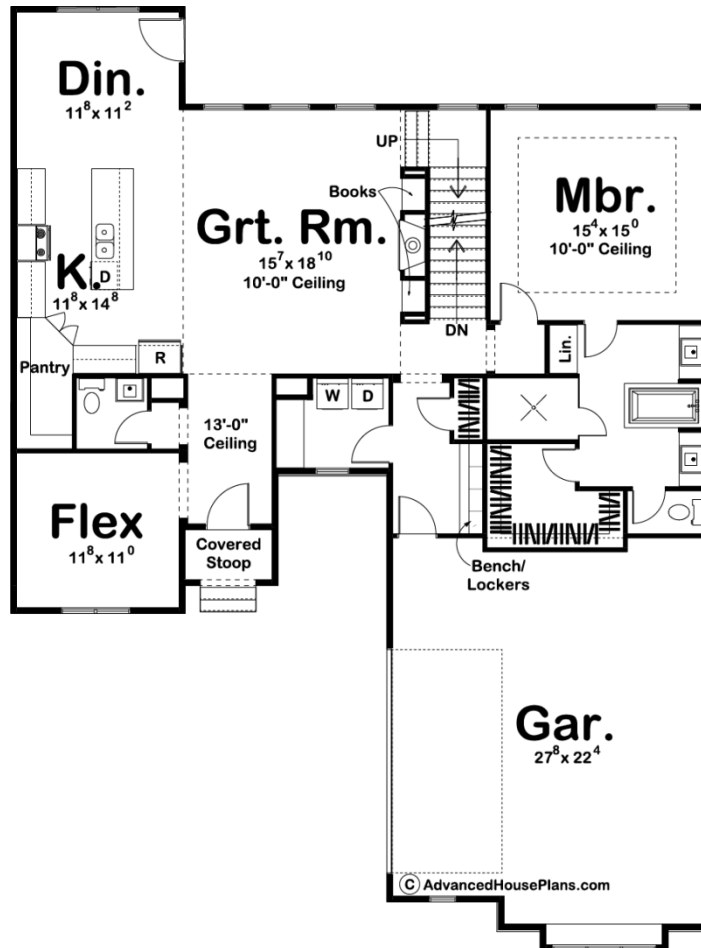


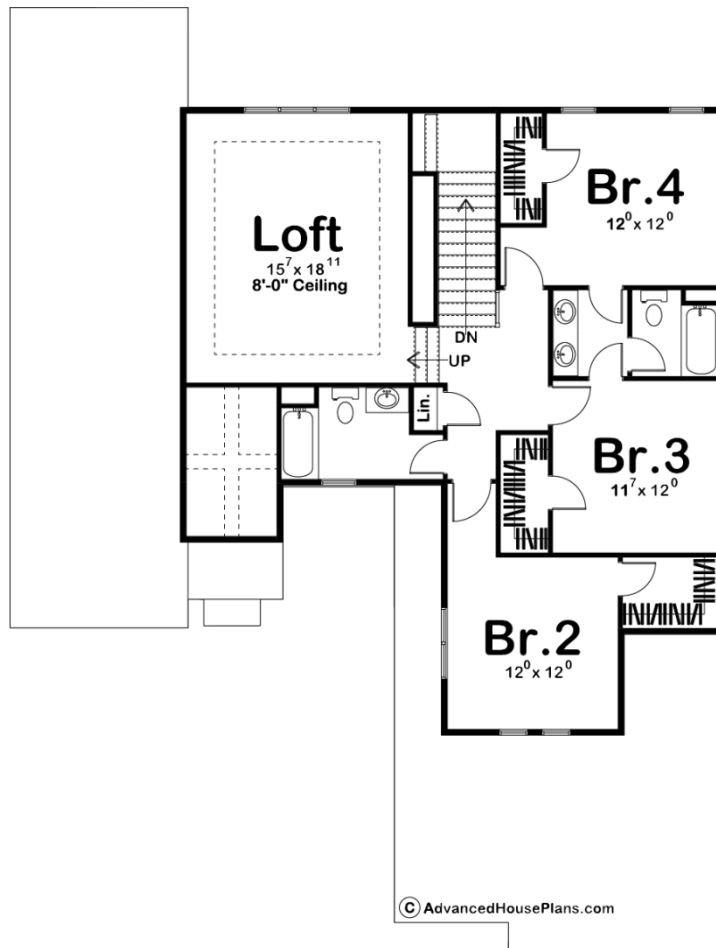


© WWW.ADVANCEDHOUSEPLANS.COM

**29342 - Pearson Data Sheet**

2831 SQ FT	4 BEDS	4 BATHS	2 BAYS	50' 0" WIDE	68' 0" DEEP
---------------	-----------	------------	-----------	----------------	----------------





## Construction Specs

### Layout

Bedrooms	4
Bathrooms	4
Garage Bays	2

### Square Footage

Main Level	1671 Sq. Ft.
Second Level	1160 Sq. Ft.
Garage	611 Sq. Ft.
Total Finished Area	2831 Sq. Ft.

### Exterior Dimensions

Width	50' 0"
Depth	68' 0"
Ridge Height	27' 0"
<i>Calculated from main floor line</i>	

## Default Construction Stats

*Stats are unique to the individual plan.*

Foundation Type	Basement
Exterior Wall Construction	2x4
Roof Pitches	Primary 6/12
Foundation Wall Height	9'
Main Wall Height	9'
Second Wall Height	8'

## Plan Description

The Pearson is a Mediterranean 1½ Story home with a sleek exterior and comfortable interior. Simple, yet very sophisticated, this plan is sure to impress as much as it is cost-effective to build. The plan features an impressive master suite with his and her vanity, full-sized tub, a large walk-in tile shower, and a spacious walk-in closet. Each of the additional 3 bedrooms has generous walk-in closets. Step up into the raised loft space for cozy entertaining, or just let the kids have the oversized room to call their own. This room adds a classy architectural element to this home with lots of surprises.