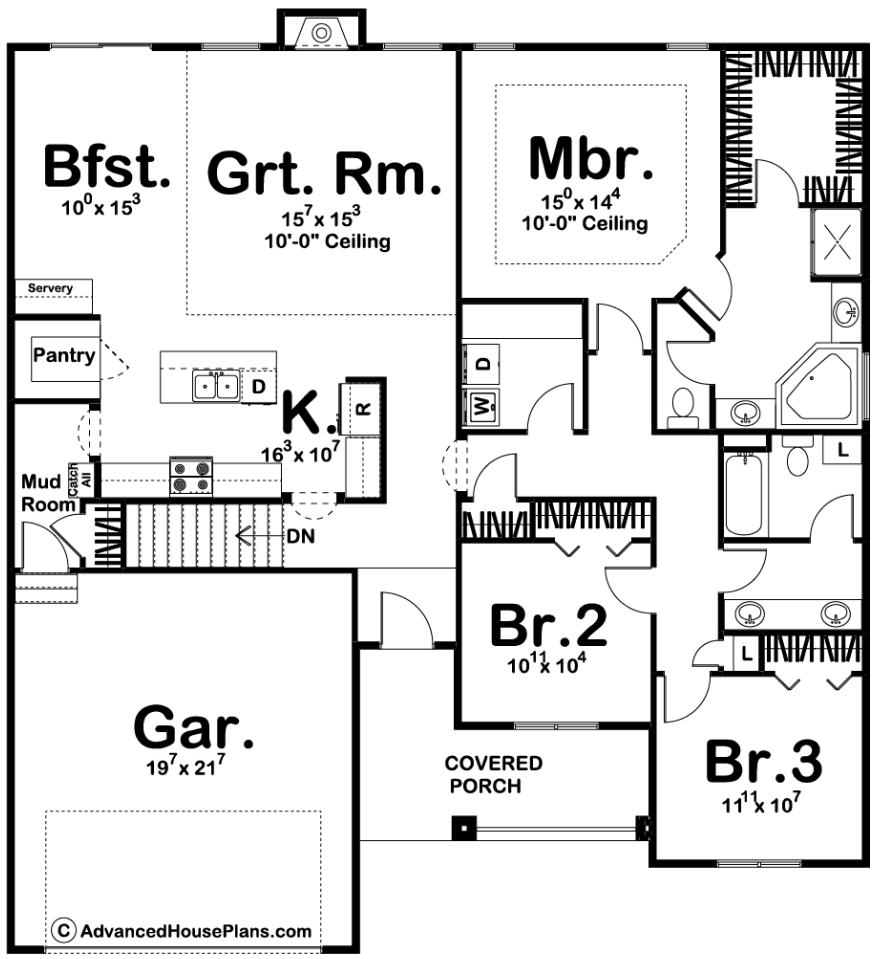




**29294 - Overwood Data Sheet**

1877 SQ FT	3 BEDS	2 BATHS	2 BAYS	50' 0" WIDE	53' 0" DEEP
---------------	-----------	------------	-----------	----------------	----------------



**Construction Specs**

Layout

Bedrooms

Bathrooms	2
Garage Bays	2

### Square Footage

Main Level	1877 Sq. Ft.
Garage	446 Sq. Ft.
Total Finished Area	1877 Sq. Ft.

### Exterior Dimensions

Width	50' 0"
Depth	53' 0"
Ridge Height <i>Calculated from main floor line</i>	25'

### Default Construction Stats

*Stats are unique to the individual plan.*

Foundation Type	Basement
Exterior Wall Construction	2x4
Roof Pitches	8/12 F-B, 12/12 S-S
Foundation Wall Height	9'
Main Wall Height	9'

## Plan Description

A covered front porch and a pair of gables establish a sense of comfort on this 1,877 sq. ft., 1-story house plan. Inside, a few steps bring guests into the great room, with its fireplace, views to the rear and boundary-defining 10-foot-high ceiling. The kitchen and breakfast area lie open to the great room for comfortable entertaining. The kitchen itself is well-appointed, with an island work station, generous counter space, and a walk-in pantry. The breakfast area, which accesses the outside through sliding doors, features a handy servery counter. Just off the kitchen, a mud room with coat closet accesses the home's 2-car, front-load garage. All sleeping quarters reside on the other side of the home, where the master suite is tucked away for privacy. Its bath area -- offering amenities usually found in much larger homes -- includes his-and-her vanities, a corner soaking tub, compartmented toilet and a sizeable walk-in closet. Bedrooms 2 and 3 are separated from the master suite for privacy. Both secondary bedrooms share a central hall bath that features a double sink vanity that lies outside the bath area.