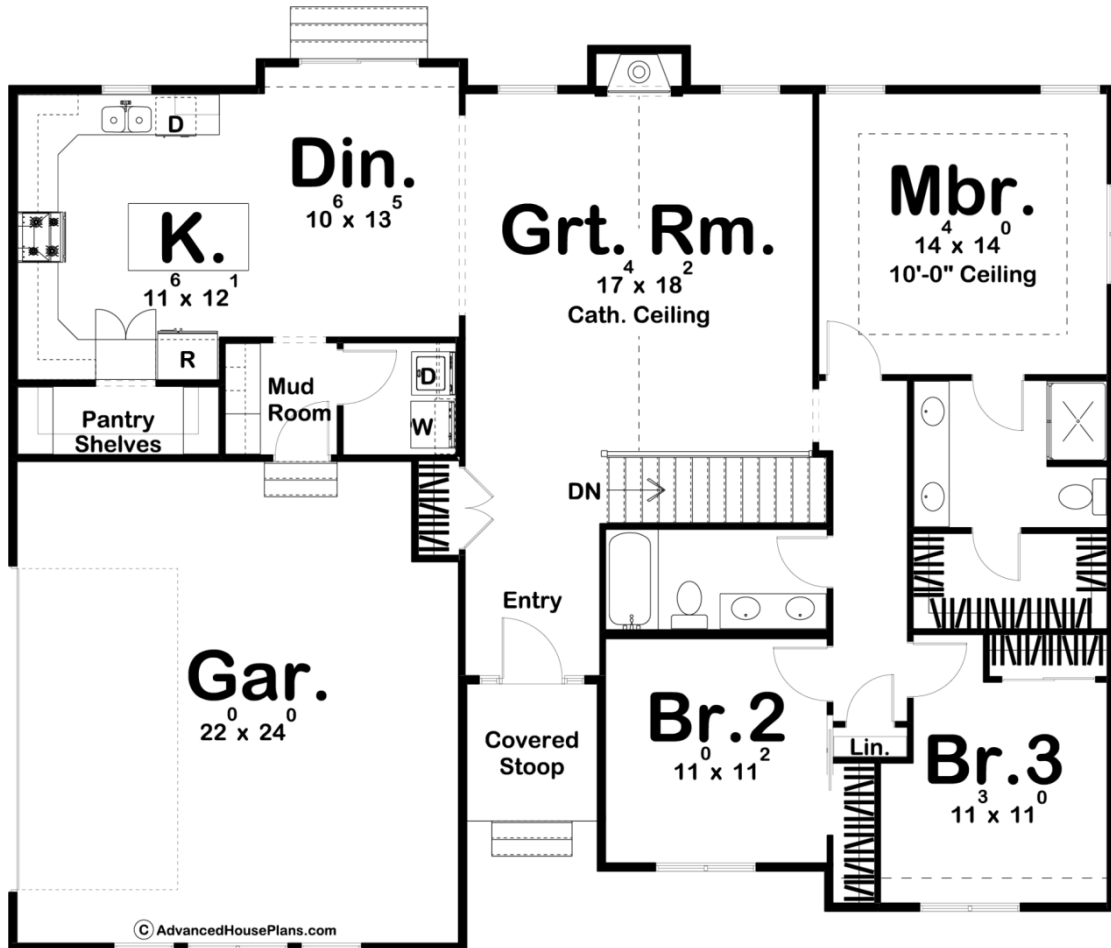




29864 - Oakdale Data Sheet

1678 SQ FT	3 BEDS	2 BATHS	2 BAYS	55' 0" WIDE	45' 0" DEEP
---------------	-----------	------------	-----------	----------------	----------------



Construction Specs

Layout

Bedrooms

Bathrooms	2
-----------	---

Garage Bays	2
-------------	---

Square Footage

Main Level	1678 Sq. Ft.
------------	--------------

Garage	535 Sq. Ft.
--------	-------------

Total Finished Area	1678 Sq. Ft.
---------------------	--------------

Exterior Dimensions

Width	55' 0"
-------	--------

Depth	45' 0"
-------	--------

Default Construction Stats

Stats are unique to the individual plan.

Foundation Type	Basement
-----------------	----------

Exterior Wall Construction	2x4
----------------------------	-----

Roof Pitches	8/12 Primary, 4/12 Secondary
--------------	------------------------------

Foundation Wall Height	9'
------------------------	----

Main Wall Height	9'
------------------	----

Plan Description

The Oakdale plan makes great use of its efficient space to create a fantastic simple modern farmhouse. The exterior features a side-load garage and board and batten siding. As you walk through the entryway, you will see a large great room with a soaring cathedral ceiling. The great room is warmed by a fireplace and lets in a lot of natural light with windows to the back yard. The dining room flows into a beautiful u-shaped kitchen with a large prep island and a walk-in pantry. On the right side of the home, you will find a wonderful master suite complete with his/her vanities, a walk-in shower, and a walk-in closet. Bedrooms 2 and 3 share a centrally located hall bathroom. The house is also accessible from the side load 2 car garage through a simple and practical mudroom with lockers. This house is sure to impress at its small 1678 sq. ft. footprint.