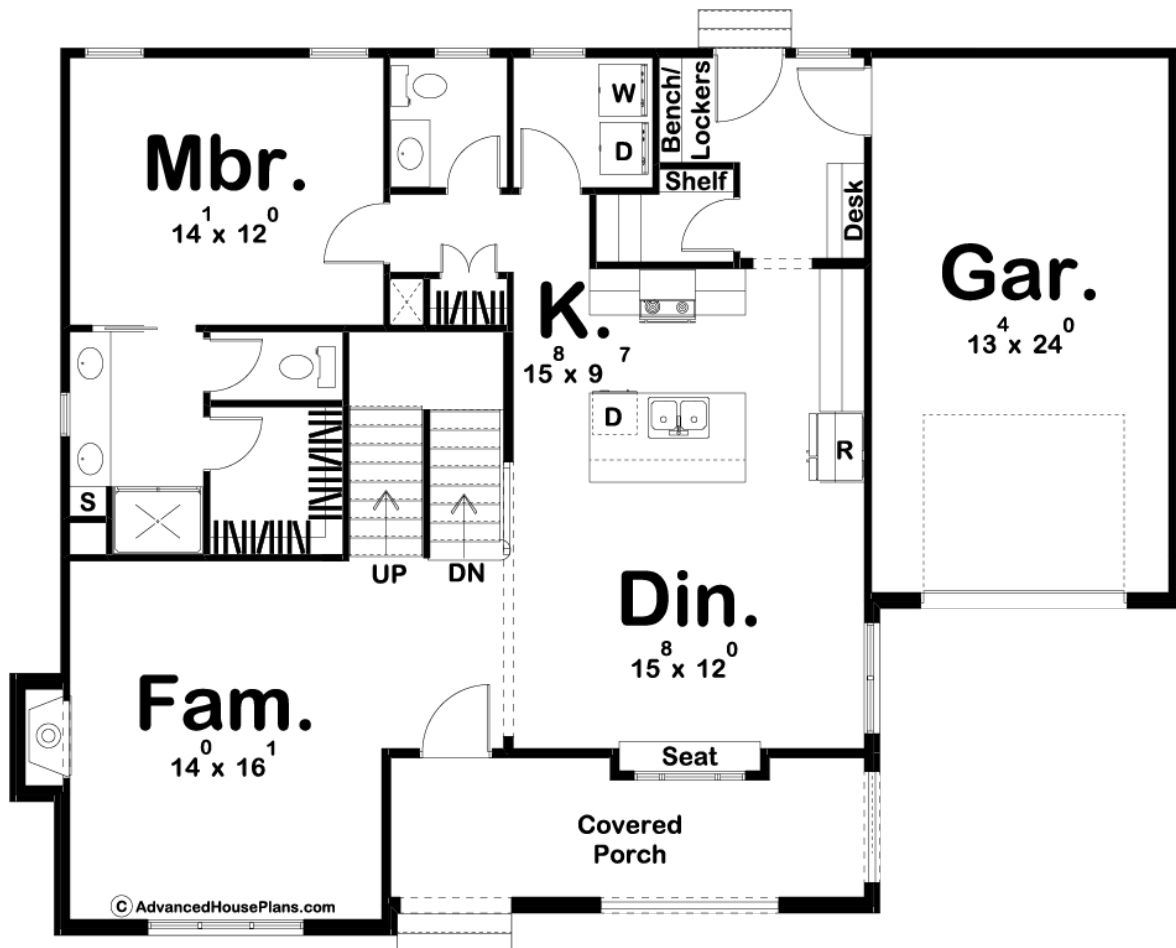


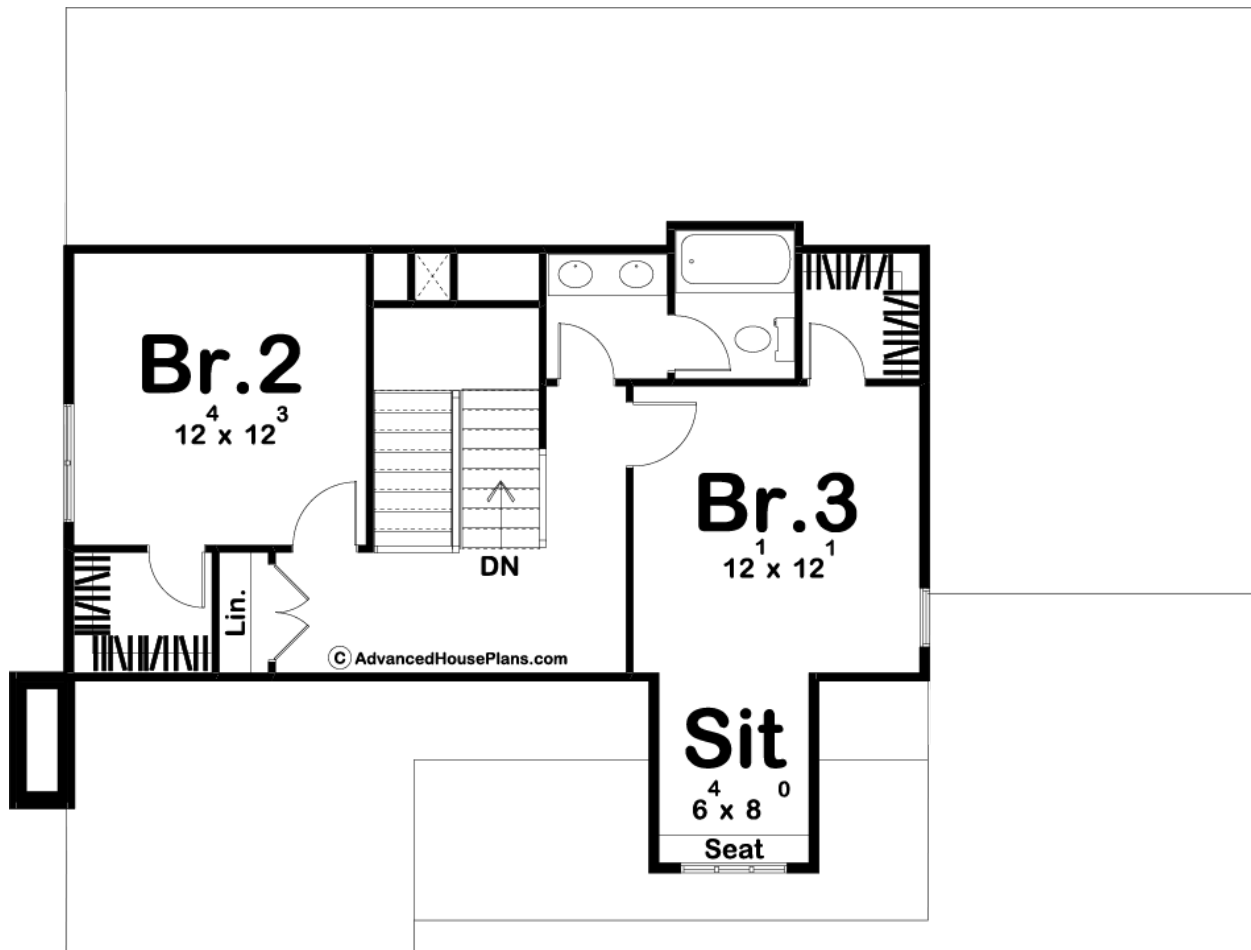
ADVANCED
HOUSE PLANS



29741 - Northridge Data Sheet

1912 SQ FT	3 BEDS	3 BATHS	1 BAYS	53' 0" WIDE	40' 0" DEEP
---------------	-----------	------------	-----------	----------------	----------------





Construction Specs

Layout

Bedrooms	3
Bathrooms	3
Garage Bays	1

Square Footage

Main Level	1280 Sq. Ft.
Second Level	632 Sq. Ft.
Garage	337 Sq. Ft.
Total Finished Area	1912 Sq. Ft.

Exterior Dimensions

Width	53' 0"
Depth	40' 0"

Default Construction Stats

Stats are unique to the individual plan.

Foundation Type	Basement
-----------------	----------

Exterior Wall Construction	2x4
Roof Pitches	12/12 Primary, 6/12 4/12 Secondary
Foundation Wall Height	9'
Main Wall Height	9'
Second Wall Height	8'

Plan Description

This charming modern cottage plan has excellent curb appeal with its brick facade. A covered front porch creates an inviting entry to the home. Inside the house, you'll find a family room that is warmed by a wonderful fireplace. The dining room flows perfectly into the kitchen and has a built-in window seat. The kitchen includes an island with a snack bar and a walk-in pantry. The main floor also includes a master suite that includes a bathroom with his/her vanities, an enclosed toilet area, and a walk-in closet. On the upper floor, you'll find 2 bedrooms. Bedrooms 2 and 3 share a conveniently located hall bathroom that has dual vanities. Each bedroom has its own walk-in closet. Bedroom 3 includes a wonderful sitting area with a built-in window seat. Back on the main floor, the home's 1 car garage accesses the home through a wonderful mudroom that includes a bench, lockers, and a built-in desk.