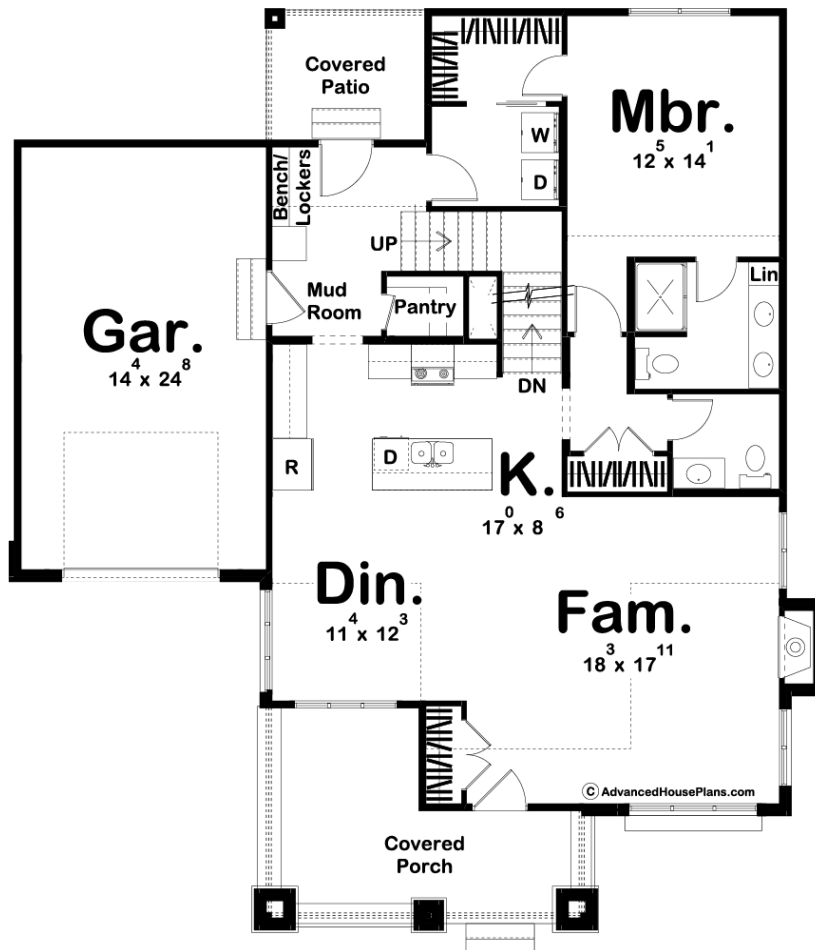
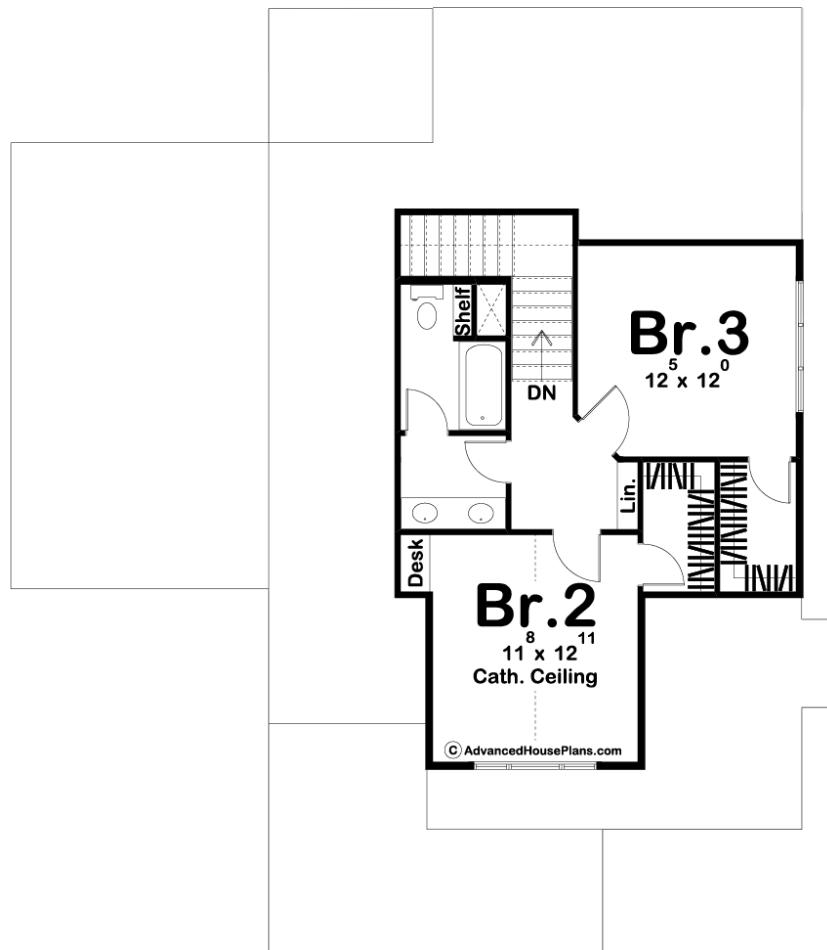




**29740 - Martin Court Data Sheet**

1836 SQ FT	3 BEDS	3 BATHS	1 BAYS	47' 0" WIDE	53' 4" DEEP
---------------	-----------	------------	-----------	----------------	----------------





## Construction Specs

### Layout

Bedrooms	3
Bathrooms	3
Garage Bays	1

### Square Footage

Main Level	1290 Sq. Ft.
Second Level	546 Sq. Ft.
Garage	372 Sq. Ft.
Total Finished Area	1836 Sq. Ft.

### Exterior Dimensions

Width	47' 0"
Depth	53' 4"
Ridge Height	26' 0"
<i>Calculated from main floor line</i>	

## Default Construction Stats

*Stats are unique to the individual plan.*

Foundation Type	Basement
Exterior Wall Construction	2x4
Roof Pitches	8/12 Primary, 6/12 2/12 Secondary
Foundation Wall Height	9'
Main Wall Height	9'
Second Wall Height	8'

## Plan Description

The Martin Court plan gives off a cozy and inviting Craftsman cottage look and mixes in plenty of modern amenities. This house has wonderful curb appeal. Inside the home, the floorplan feels larger than it is with its open concept. The family room, dinette, and kitchen flow seamlessly together. The family room is warmed by a fireplace. The kitchen includes a large island with a flush snack bar. The Master suite is conveniently located on the main floor and includes his/her vanities, a walk-in shower and a walk-in closet with access to the laundry room. Upstairs, you will find 2 bedrooms, bedrooms 2 and 3 share a conveniently located hall bathroom and each has its own walk-in closet. Back on the main floor, the 1 car garage accesses the home through a convenient mudroom.