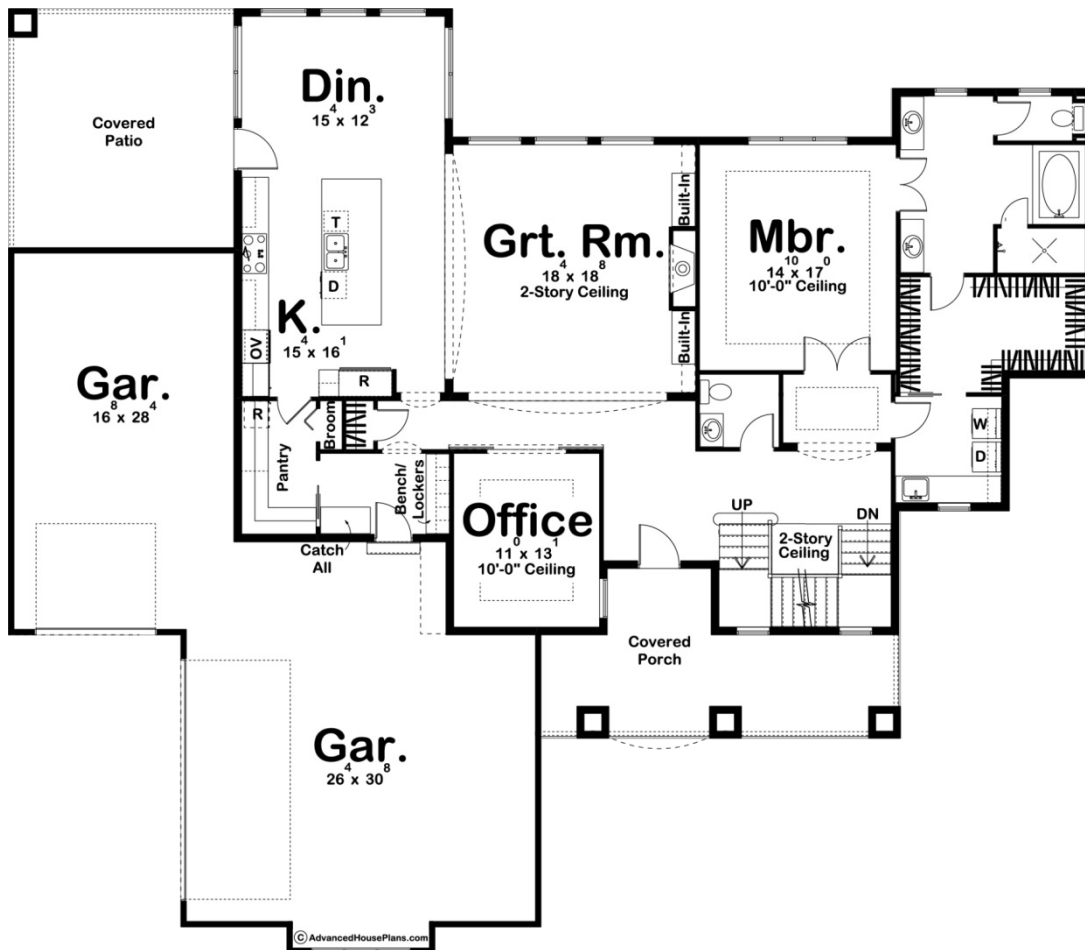
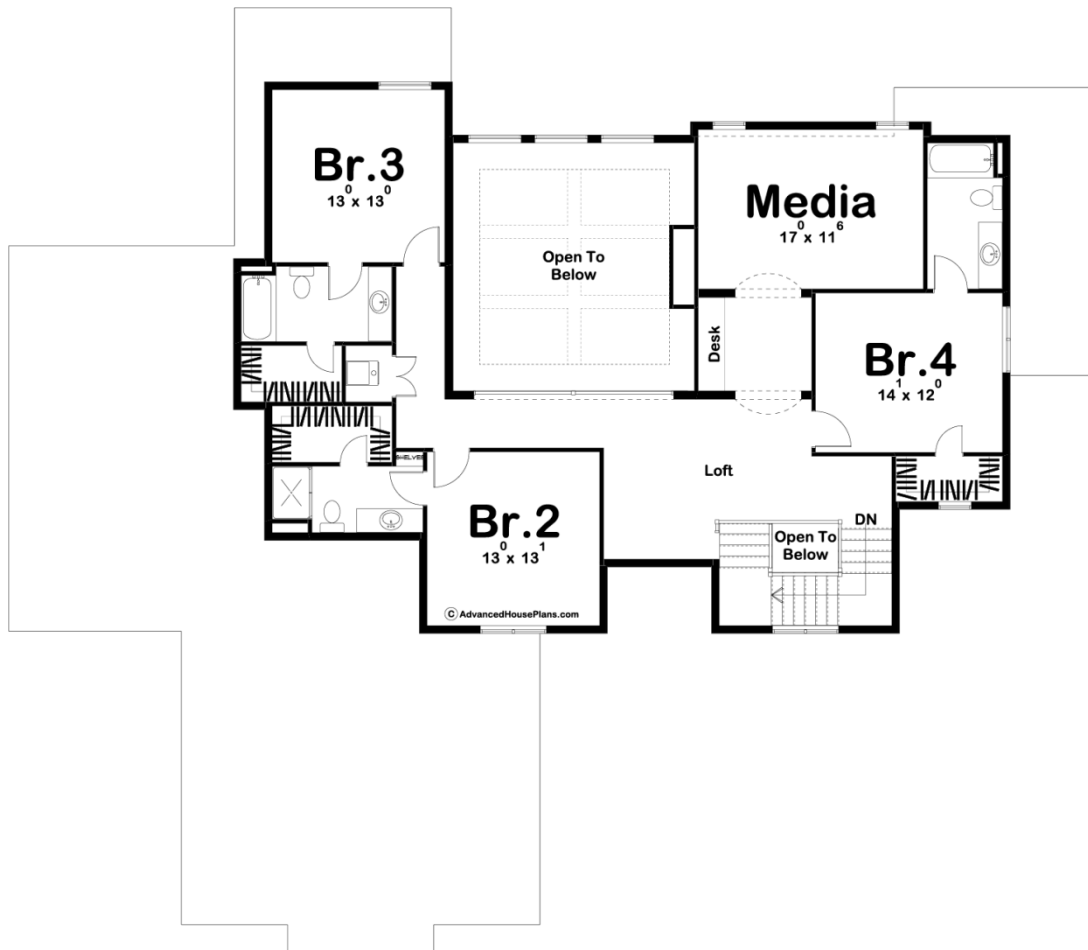




**29500 - Malone Data Sheet**

3808 SQ FT	4 BEDS	5 BATHS	3 BAYS	81' 8" WIDE	71' 0" DEEP
---------------	-----------	------------	-----------	----------------	----------------





## Construction Specs

### Layout

Bedrooms	4
Bathrooms	5
Garage Bays	3

### Square Footage

Main Level	2275 Sq. Ft.
Second Level	1533 Sq. Ft.
Garage	1221 Sq. Ft.
Total Finished Area	3808 Sq. Ft.

### Exterior Dimensions

Width	81' 8"
Depth	71' 0"
Ridge Height	31' 0"
<i>Calculated from main floor line</i>	

### Default Construction Stats

*Stats are unique to the individual plan.*

Foundation Type	Basement
Exterior Wall Construction	2x4
Roof Pitches	Primary 6/12, Secondary 10/12   4/12
Foundation Wall Height	9'
Main Wall Height	10'
Second Wall Height	8'

## Plan Description

A seemingly endless array of enticing amenities are found in this 1 1/2 story, Craftsman-style house plan. A covered front porch greets guests, who upon entering the home, are treated to views of the great room with arched entryways. The great room captivates its occupants with a soaring two-story-high ceiling and a beautiful fireplace. Adjacent to the great room is a large open kitchen with island workspace and walk-in pantry. A covered patio is accessed from the dining area for outdoor dining or simply relaxing. The main floor Master Suite features a large bathroom with his and her vanities and a massive walk-in closet with access to the laundry room. On the second level, each bedroom has its own bathroom and walk-in closet. You will also find a wonderful media room upstairs. A loft area overlooks the 2 story great room that lies under exposed beams. Back on the main level, the Malone's 3 car garage accesses the home through a convenient utility area that includes a catch-all and bench/lockers.