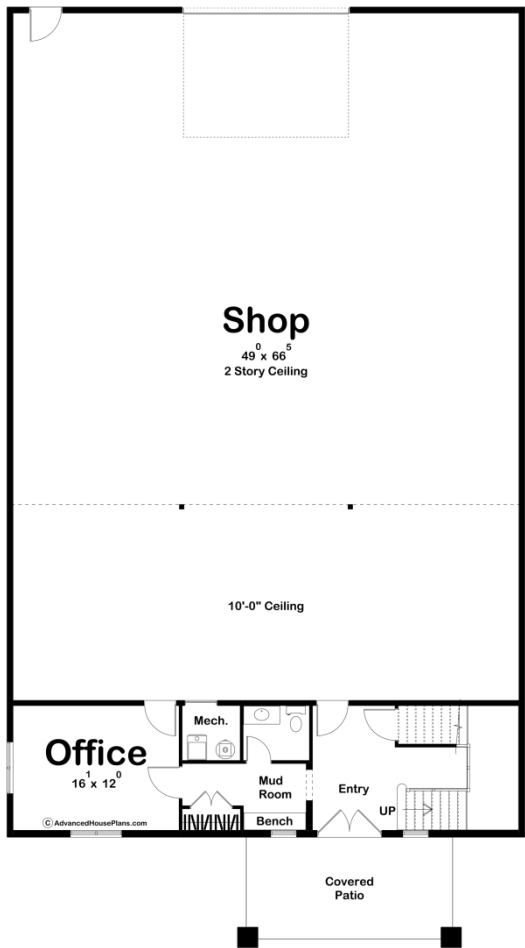
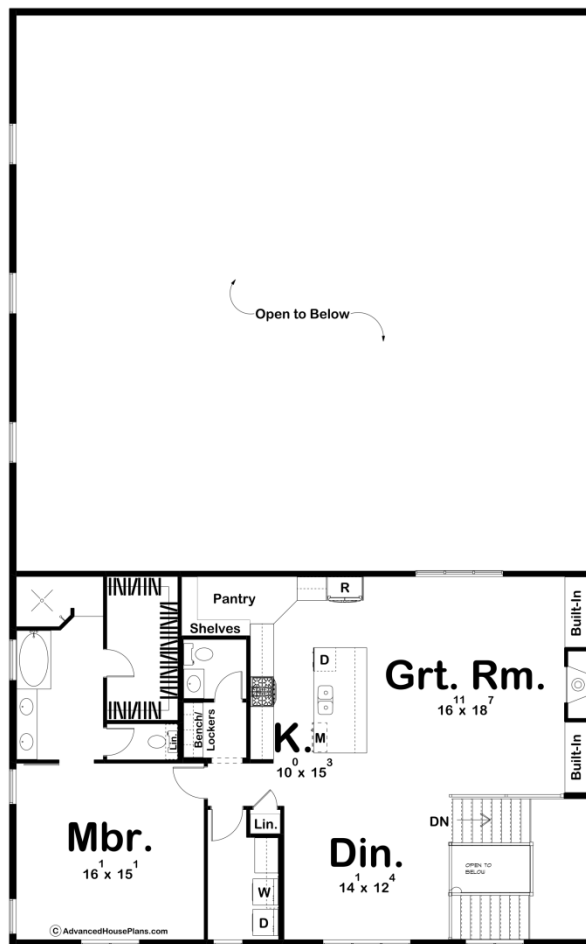




30088 - Lockwood Data Sheet

2057 SQ FT	1 BEDS	3 BATHS	6 BAYS	50' 0" WIDE	90' 0" DEEP
---------------	-----------	------------	-----------	----------------	----------------





Construction Specs

Layout

Bedrooms	1
Bathrooms	3
Garage Bays	6

Square Footage

Main Level	620 Sq. Ft.
Second Level	1437 Sq. Ft.
Garage	3385 Sq. Ft.
Total Finished Area	2057 Sq. Ft.

Exterior Dimensions

Width	50' 0"
Depth	90' 0"

Default Construction Stats

Stats are unique to the individual plan.

Foundation Type	Slab
-----------------	------

Exterior Wall Construction	2x6
Roof Pitches	6/12 Primary
Main Wall Height	10'
Second Wall Height	9'

Plan Description

If you've ever wondered what a "Shouse" is....it's this plan. A Shouse is a shop and a house under one roof. The Lockwood plan is a massive shop with fully functional living quarters on the second floor. The shop area comes in at over 3000 sq. ft. and is a great place for any hobbyist or anyone who works in their garage daily. An office is just off the Barndominium shop area and provides a great space to run your business from. On the Barndominium's second floor, you'll find an absolutely amazing 1 bedroom apartment. The great room is warmed by a fireplace that is flanked by built-in bookshelves. The full kitchen includes a large island and a deep walk-in pantry. The master bedroom includes a walk-in shower, dual vanity, a soaking tub, and a large walk-in closet.