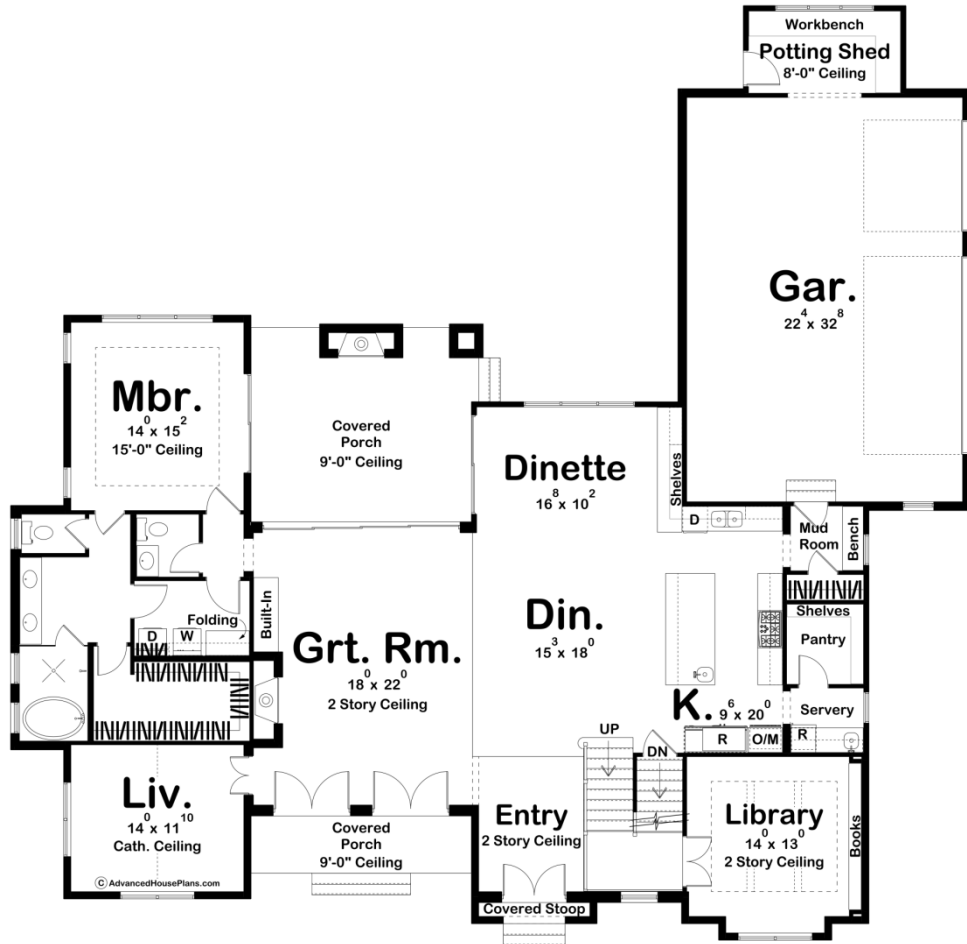
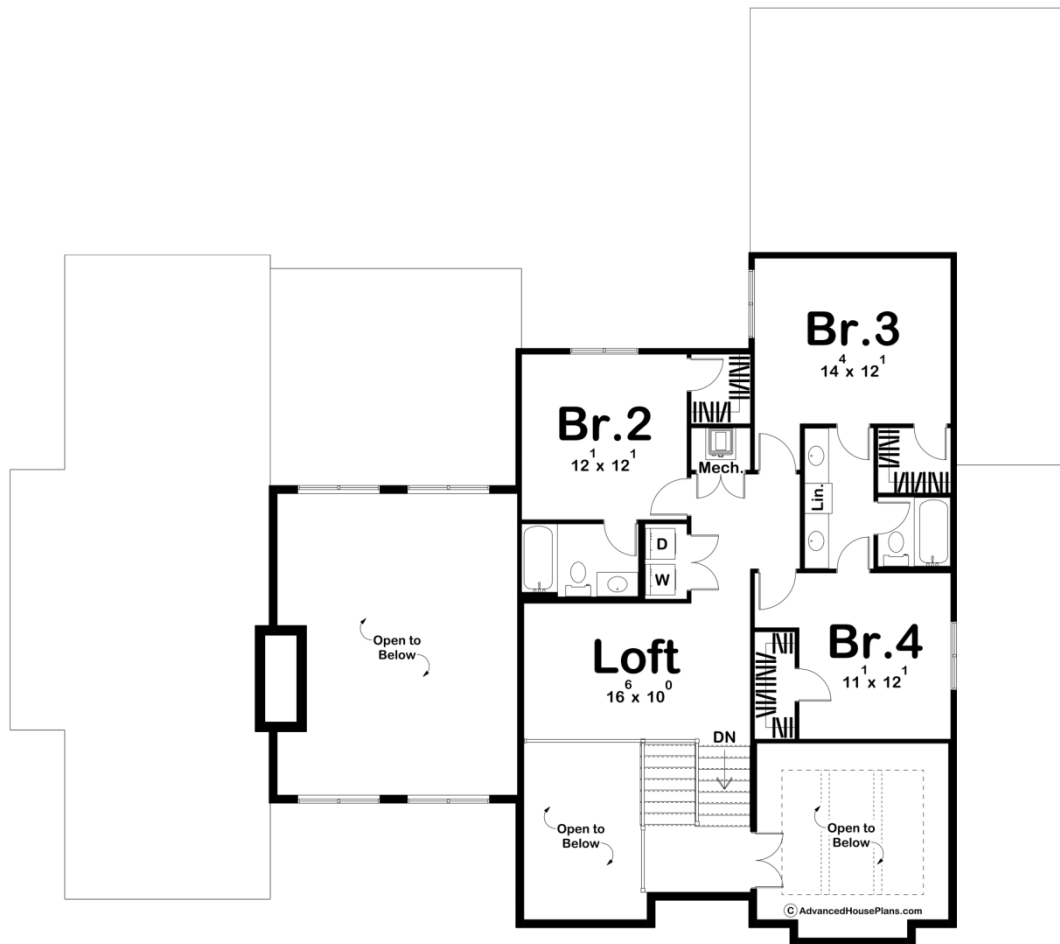




30175 - Laredo Data Sheet

3422 SQ FT	4 BEDS	4 BATHS	3 BAYS	77' 0" WIDE	75' 4" DEEP
---------------	-----------	------------	-----------	----------------	----------------





Construction Specs

Layout

Bedrooms	4
Bathrooms	4
Garage Bays	3

Square Footage

Main Level	2400 Sq. Ft.
Second Level	1022 Sq. Ft.
Covered Area	397 Sq. Ft.
Garage	858 Sq. Ft.
Total Finished Area	3422 Sq. Ft.

Exterior Dimensions

Width	77' 0"
Depth	75' 4"
Ridge Height	32' 0"
<i>Calculated from main floor line</i>	

Default Construction Stats

Stats are unique to the individual plan.

Foundation Type	Basement
Exterior Wall Construction	2x4
Roof Pitches	8/12 Primary, 12/12, 6/12, 10/12 Secondaries
Foundation Wall Height	9'
Main Wall Height	10'
Second Wall Height	8'

Plan Description

The Laredo plan is a stunning 1.5 Story Modern Cottage style house plan. The home showcases excellent curb appeal with its exterior that combines stucco, brick, and metal accents. Immediately inside the front doors, you'll find yourself in the 2 story entry way. Dual sets of French doors also lead you into the large great room. The great room lies under a high 2-story ceiling and is warmed by a fireplace that features a built-in bookshelf. The great room opens up to the rear covered porch through a large quad sliding glass door. The dining room and kitchen are wide open to the home's floor plan. The kitchen includes tons of counter space, a walk-in pantry, a large island, and an oversized refrigerator. On the left side of the home you'll find the amazing master suite. The master bedroom lies under a soaring 15' trayed ceiling and has its own door to the rear covered patio. The impressive master bathroom includes an enclosed toilet area, his/her vanities, a wet room with a soaking tub, and a large walk-in closet. As you head upstairs, the landing leads into a cozy library with built-in bookshelves. The second floor features 3 additional bedrooms and a loft. Each bedroom has its own walk-in closet. Bedroom 2 has access to its own bathroom while bedrooms 3 and 4 share a Jack-and-Jill bath. Back on the main level, the home features a large side load 3-car garage with a potting shed. The garage enters the home through a convenient mudroom with a bench and a coat closet.