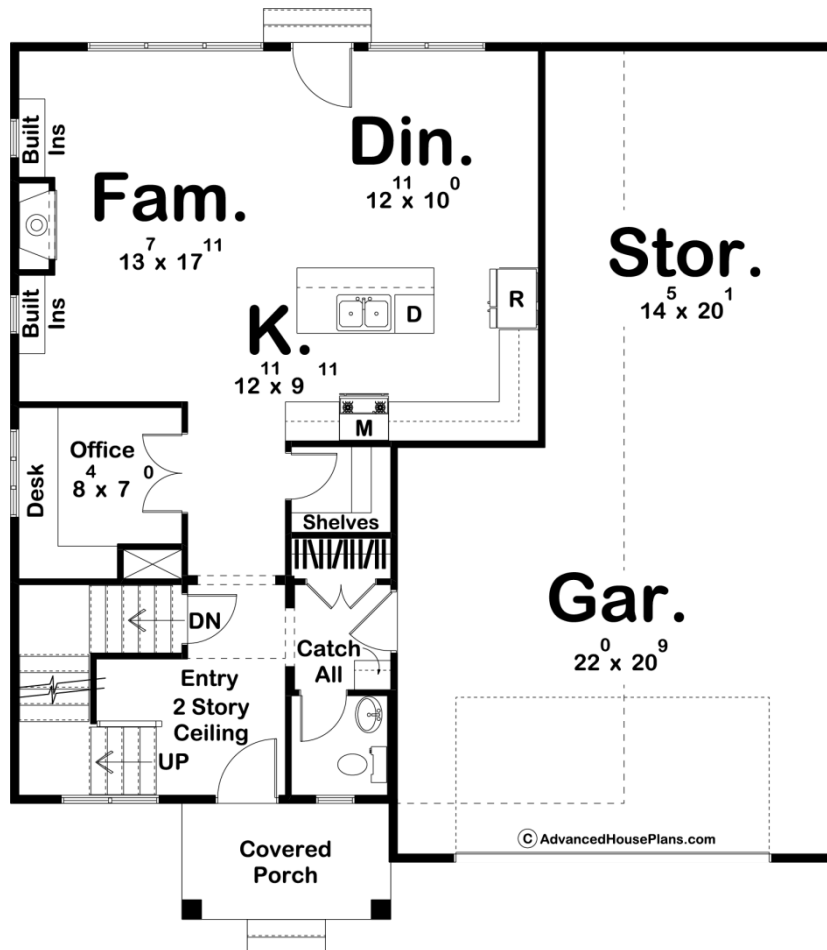
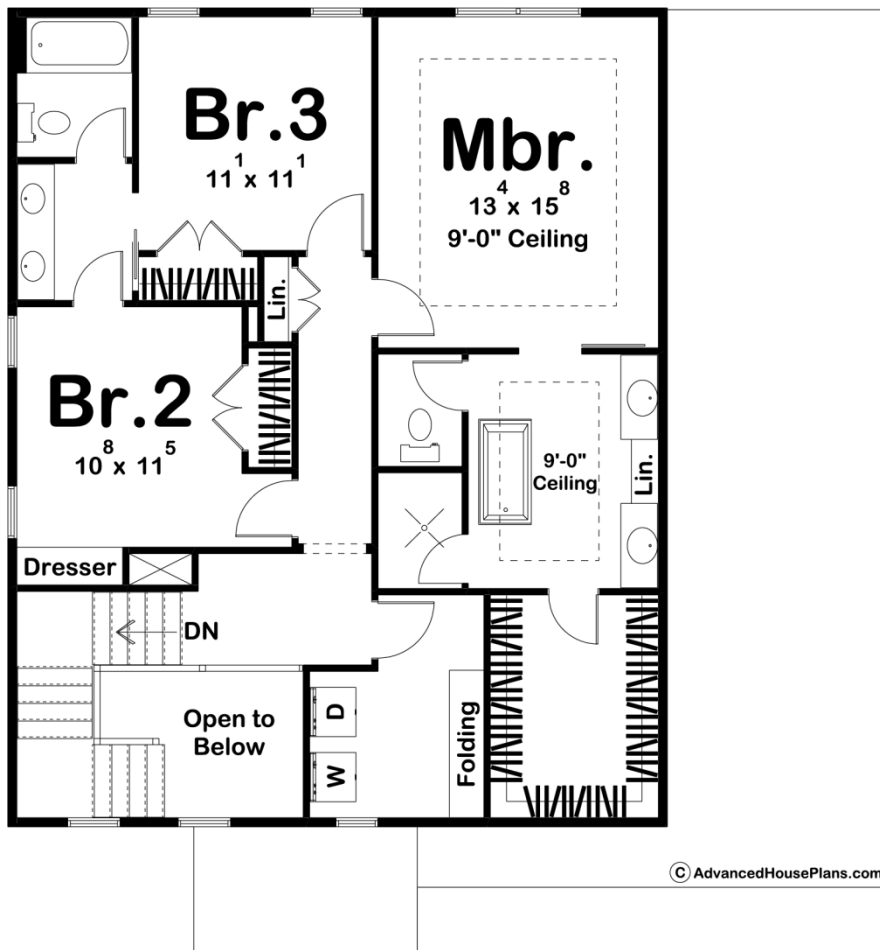




**29895 - Laramie Data Sheet**

1990 SQ FT	3 BEDS	3 BATHS	2 BAYS	42' 0" WIDE	44' 8" DEEP
---------------	-----------	------------	-----------	----------------	----------------





## Construction Specs

### Layout

Bedrooms	3
Bathrooms	3
Garage Bays	2

### Square Footage

Main Level	916 Sq. Ft.
Second Level	1074 Sq. Ft.
Covered Area	62 Sq. Ft.
Garage	776 Sq. Ft.
Total Finished Area	1990 Sq. Ft.

### Exterior Dimensions

Width	42' 0"
Depth	44' 8"

### Default Construction Stats

*Stats are unique to the individual plan.*

Foundation Type	Basement
Exterior Wall Construction	2x4
Roof Pitches	6/12 Primary, 12/12 4/12 Secondary
Foundation Wall Height	9'
Main Wall Height	9'
Second Wall Height	8'

## Plan Description

The Laramie plan is a charming modern farmhouse that features a ton of amenities in a small footprint. At only 42 feet wide and just under 45 feet deep, this house is designed to fit on most lots. The exterior combines board and batten siding with wood columns and a decorative garage door to give the home the Modern Farmhouse curb appeal. One step through the front door and you'll find yourself in a beautiful 2 story entry. The main living area, including the kitchen, family room, and dining room, is laid out in a seamless open concept. The kitchen includes a walk-in pantry and a large island with a snack bar. The family room is warmed by a fireplace that is flanked by beautiful built-in bookshelves. Just off the main living area, you'll find a convenient office with a built-in desk. The second floor includes 3 bedrooms. The master suite lies under a trayed ceiling and includes a gorgeous master bathroom. The master bathroom includes a soaking tub, his/her vanities, and a large walk-in closet. Bedrooms 2 and 3 share a jack and jill bathroom for convenience. Back on the main level, the home's 2 car garage includes a large storage or workshop area and accesses the home through a convenient mudroom with a coat closet and catch-all.