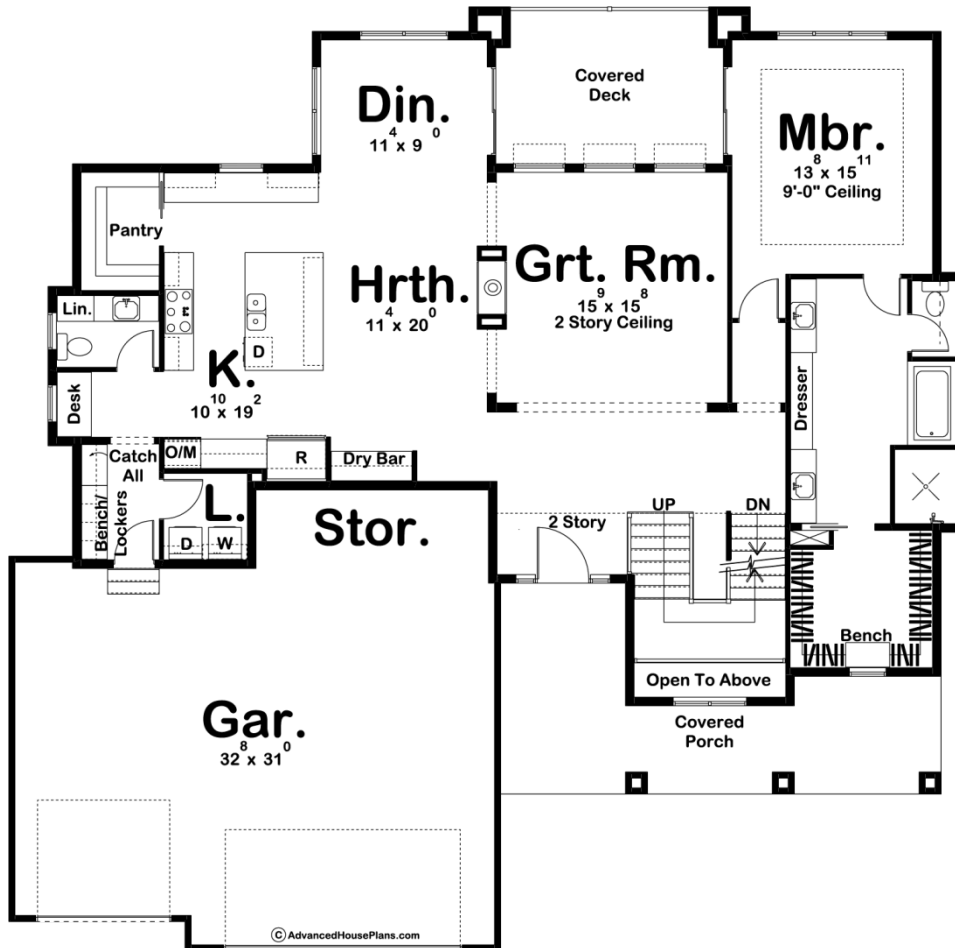
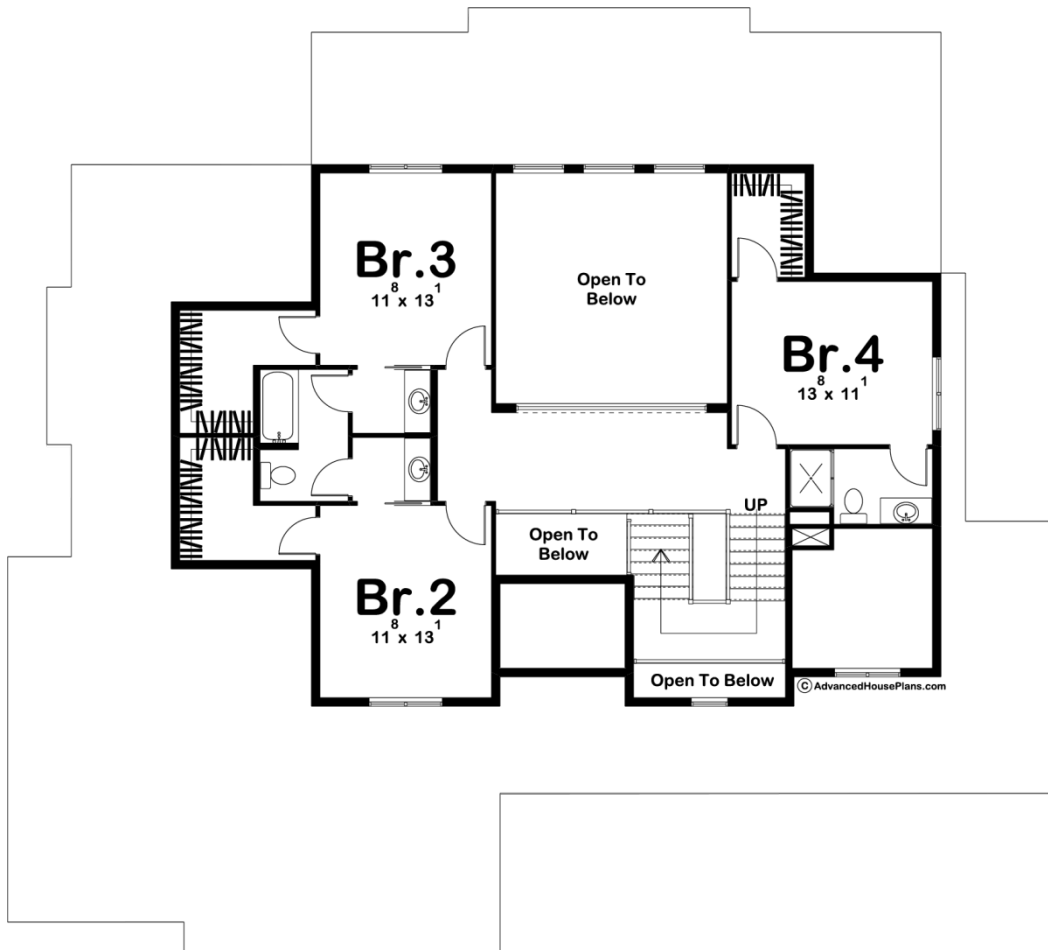




**29525 - Kingston Data Sheet**

3042 SQ FT	4 BEDS	4 BATHS	3 BAYS	65' 0" WIDE	62' 0" DEEP
---------------	-----------	------------	-----------	----------------	----------------





## Construction Specs

### Layout

Bedrooms	4
Bathrooms	4
Garage Bays	3

### Square Footage

Main Level	2005 Sq. Ft.
Second Level	1037 Sq. Ft.
Garage	930 Sq. Ft.
Total Finished Area	3042 Sq. Ft.

### Exterior Dimensions

Width	65' 0"
Depth	62' 0"
Ridge Height	30'
<i>Calculated from main floor line</i>	

### Default Construction Stats

*Stats are unique to the individual plan.*

Foundation Type	Basement
Exterior Wall Construction	2x4
Roof Pitches	6/12
Foundation Wall Height	9'
Main Wall Height	9'
Second Wall Height	8'

## Plan Description

A seemingly endless array of enticing amenities are found in this 1 1/2 story, Craftsman-style house plan. A deep, covered front porch greets guests, who upon entering the home, are treated to views of the great room. The great room captivates its occupants with a soaring two-story-high ceiling and a double sided fireplace that is viewable from the great room and the hearth room. A covered deck is accessed from the dining area for outdoor dining or simply relaxing. The kitchen, with island workspace and walk-in pantry, accesses a fabulously practical utility area that includes a mudroom with bench and lockers and a laundry room. The master suite includes a master bath with his and her vanities and a walk-in closet with built-in bench. On the second level, bedroom 4 has its own bathroom and walk-in closet. As you walk across the catwalk, you see views below to the great room and entrance. Bedroom 2 and 3 each have their own walk-in closet and share a Hollywood bathroom.