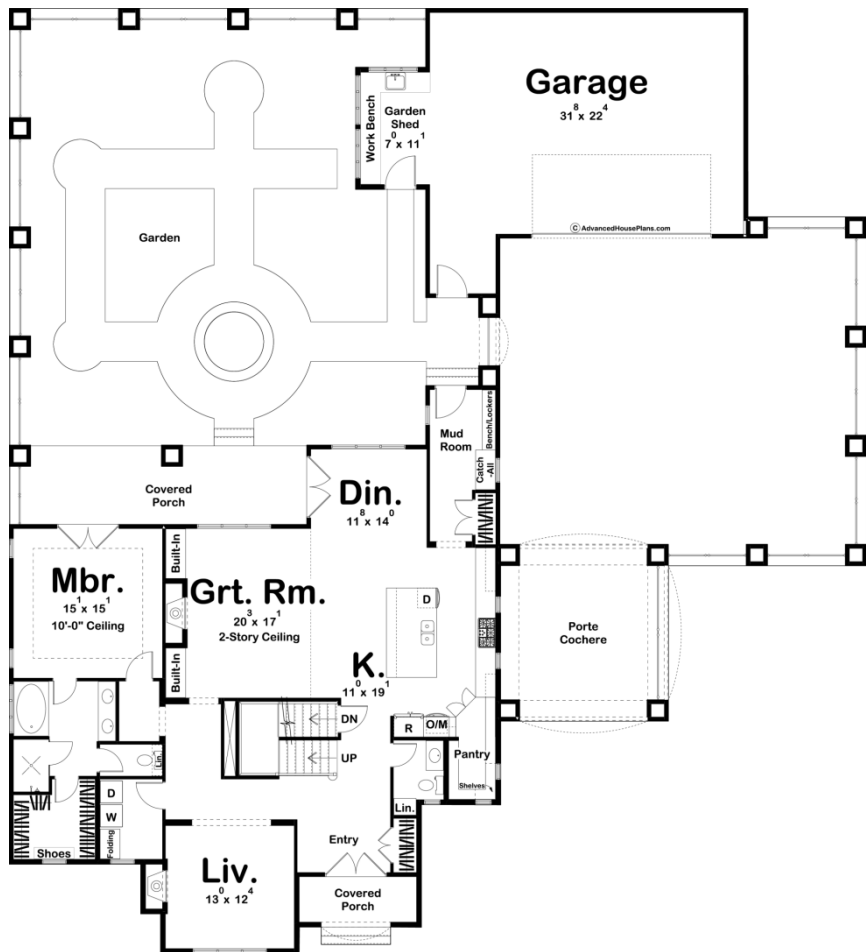
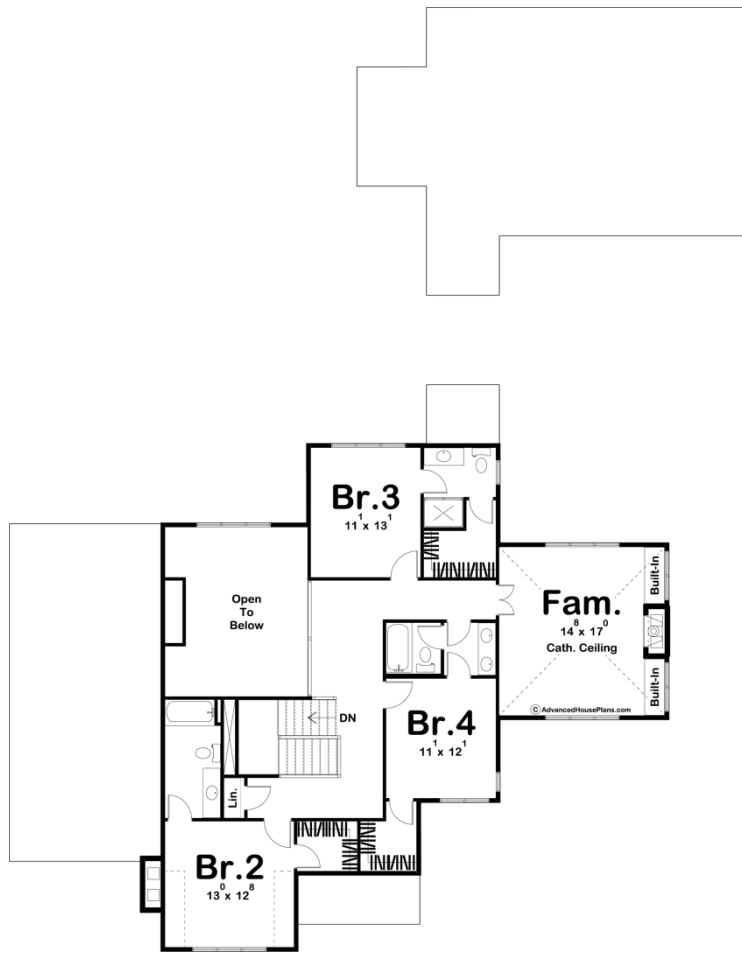




**30117 - Kinborough Heights Data Sheet**

3406 SQ FT	4 BEDS	5 BATHS	2 BAYS	74' 4" WIDE	95' 0" DEEP
---------------	-----------	------------	-----------	----------------	----------------





## Construction Specs

### Layout

Bedrooms	4
Bathrooms	5
Garage Bays	2

### Square Footage

Main Level	1969 Sq. Ft.
Second Level	1437 Sq. Ft.
Garage	788 Sq. Ft.
Total Finished Area	3406 Sq. Ft.

### Exterior Dimensions

Width	74' 4"
Depth	95' 0"

### Default Construction Stats

*Stats are unique to the individual plan.*

Foundation Type	Basement
-----------------	----------

Exterior Wall Construction	2x4
Roof Pitches	10/12 Primary, 16/12 4/12 Secondary
Foundation Wall Height	9'
Main Wall Height	9'
Second Wall Height	8'

## Plan Description

The Kinborough Heights plan wraps an amazing well thought out floor plan in the elegance of the French Country style. The exterior showcases a gated porte cochere and steep gables. Inside, you'll find a formal living room that is warmed by a fireplace to the left of the entry. Further into the home, the kitchen, great room, and dining room are arranged in an open layout. The kitchen includes a walk-in pantry and a large island with a snack ledge. The great room lies under a soaring 2 story ceiling and is warmed by a fireplace that is flanked by built-in bookshelves. The master suite is situated on the main floor and features a bathroom with a soaking tub, his/her vanities, an enclosed toilet, and a walk-in closet. The rear covered porch can be accessed from the dining room and the master suite. The real showcase of the home is the stunning garden off the rear of the home. Upstairs, you'll find 3 bedrooms and a family room. Bedrooms 2 and 3 have access to their own bathrooms while bedroom 4 shares a bathroom with the family room. Back on the main level, the homes amazing 2 car garage includes a large garden shed.