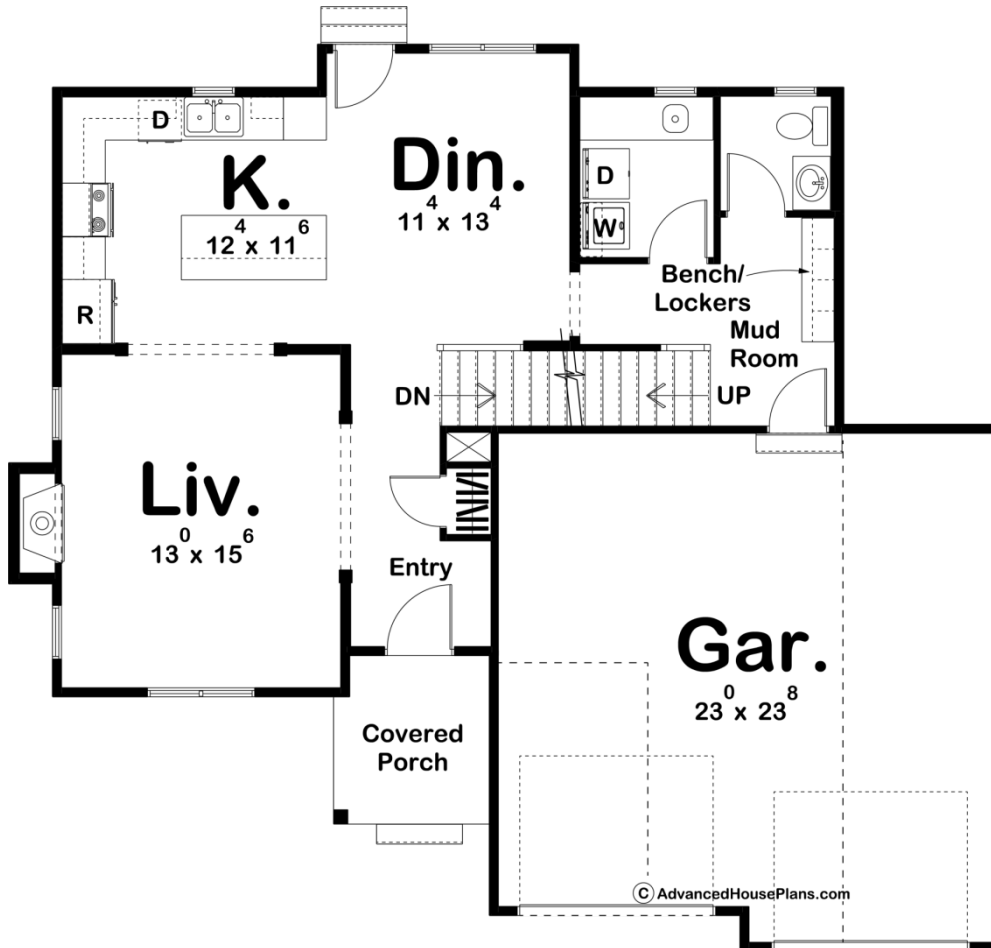
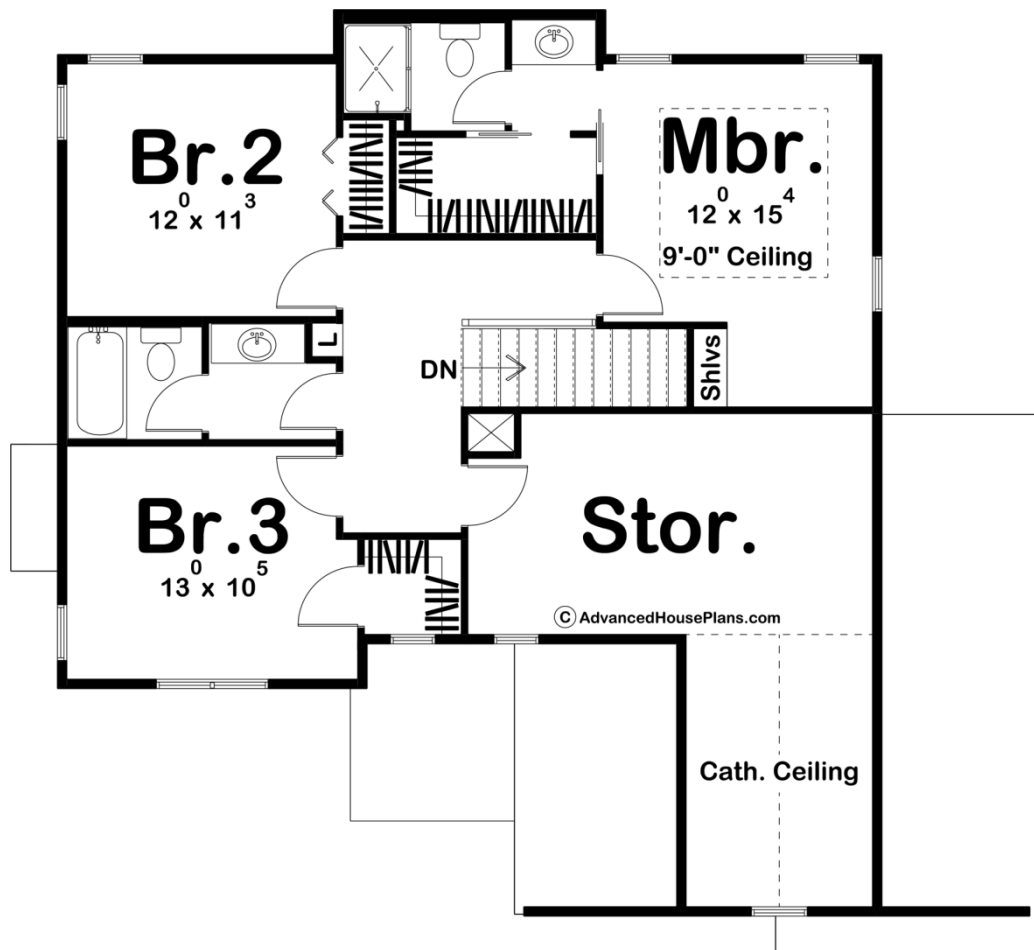




29144 - Kemper Data Sheet

1641 SQ FT	3 BEDS	3 BATHS	2 BAYS	44' 0" WIDE	42' 0" DEEP
---------------	-----------	------------	-----------	----------------	----------------





Construction Specs

Layout

Bedrooms	3
Bathrooms	3
Garage Bays	2

Square Footage

Main Level	854 Sq. Ft.
Second Level	787 Sq. Ft.
Garage	547 Sq. Ft.
Total Finished Area	1641 Sq. Ft.

Exterior Dimensions

Width	44' 0"
Depth	42' 0"
Ridge Height	26'
<i>Calculated from main floor line</i>	

Default Construction Stats

Stats are unique to the individual plan.

Foundation Type	Basement
Exterior Wall Construction	2x4
Roof Pitches	6/12 Primary, 10/12 Secondary
Foundation Wall Height	9'
Main Wall Height	9'
Second Wall Height	8'

Plan Description

The appearance of this family-friendly, Traditional-style, 2-story house plan imparts a sense of solidity and simpler times. Inside from the covered front porch, guests are received into the openly defined living room with its warming fireplace. A few steps farther in reveal the island kitchen and adjacent dining area with access to the outdoors. A utility area hosts the staircase to the upper level, and includes a laundry room, powder bath and mud room with built-in bench -- which accesses the 2-car garage. Upstairs, the master suite is separated from the secondary bedrooms for privacy. The master bath includes a compartmented toilet and shower, along with a sizeable walk-in closet. Bedrooms 2 and 3 share a central hall bath. Across from bedroom 2, an unfinished storage area adds the potential of 310 sq. ft. of usable space, where the possibilities are endless.