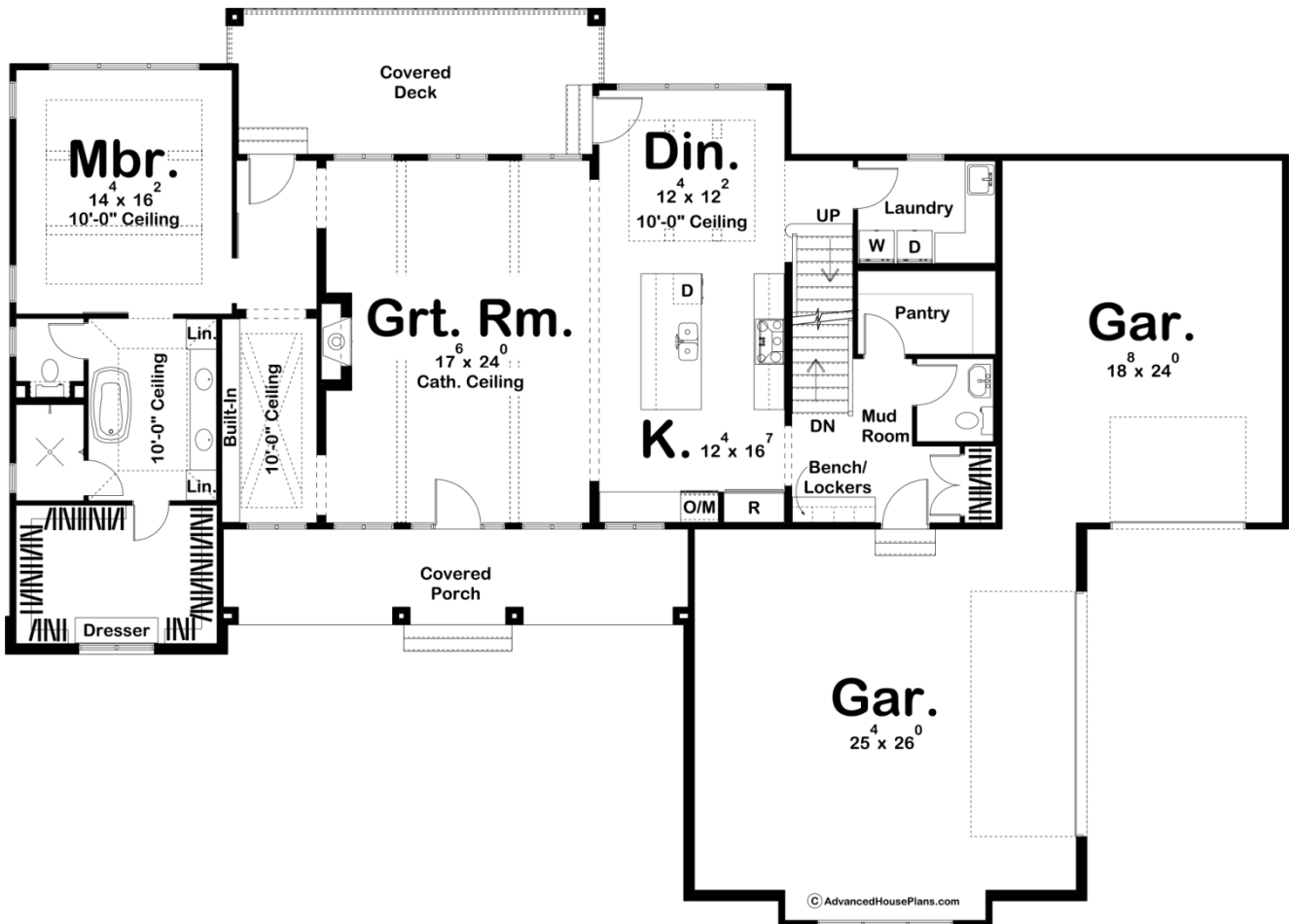
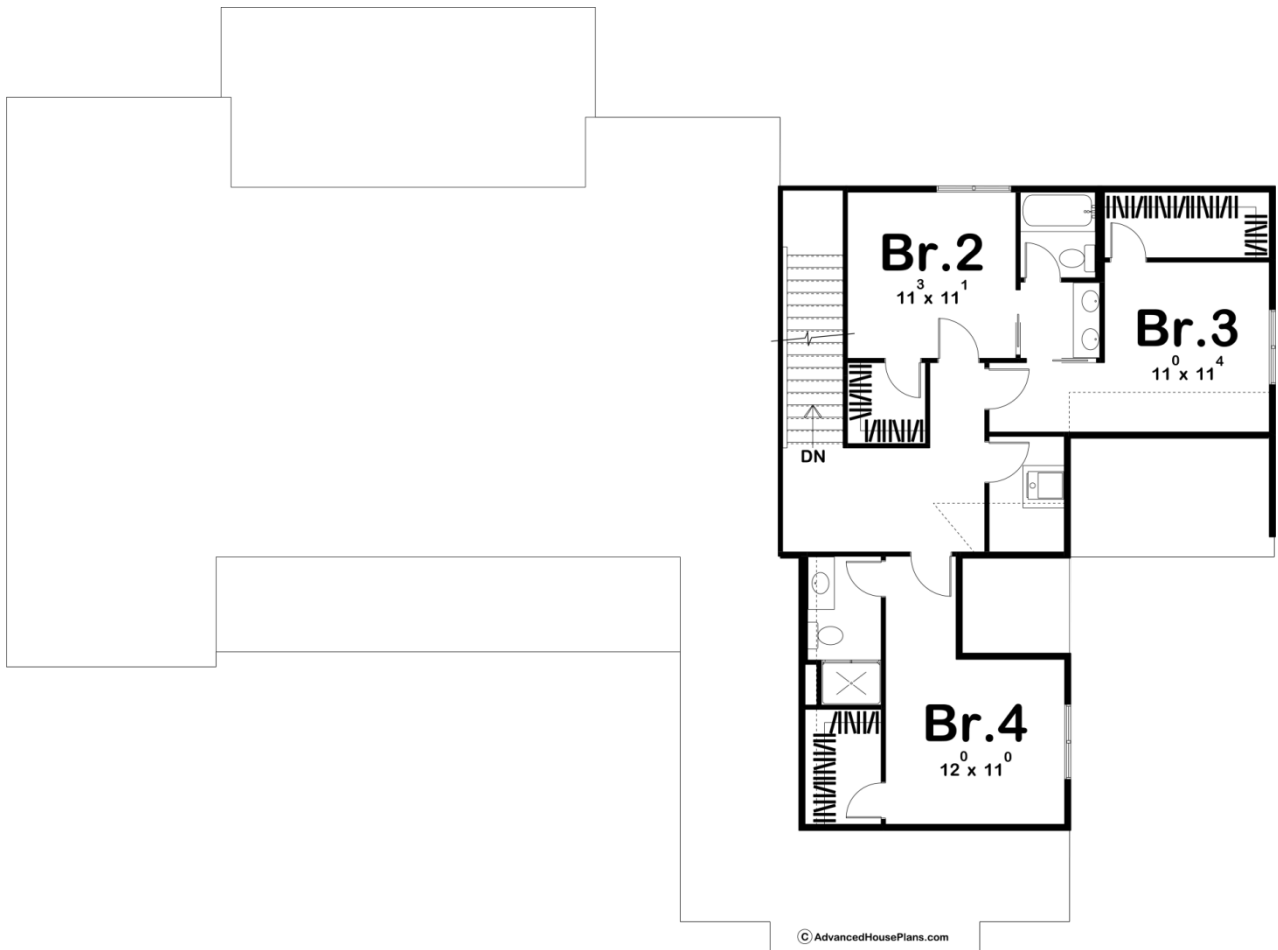




29694 - Keegan Data Sheet

| | | | | | |
|---------------|-----------|------------|-----------|----------------|----------------|
| 2736 SQ FT | 4 BEDS | 4 BATHS | 3 BAYS | 85' 0" WIDE | 61' 0" DEEP |
|---------------|-----------|------------|-----------|----------------|----------------|





Construction Specs

Layout

| | |
|-------------|---|
| Bedrooms | 4 |
| Bathrooms | 4 |
| Garage Bays | 3 |

Square Footage

| | |
|---------------------|--------------|
| Main Level | 1882 Sq. Ft. |
| Second Level | 854 Sq. Ft. |
| Garage | 1129 Sq. Ft. |
| Total Finished Area | 2736 Sq. Ft. |

Exterior Dimensions

| | |
|-------|--------|
| Width | 85' 0" |
| Depth | 61' 0" |

Default Construction Stats

Stats are unique to the individual plan.

| | |
|-----------------|----------|
| Foundation Type | Basement |
|-----------------|----------|

| | |
|----------------------------|------------------------------------|
| Exterior Wall Construction | 2x4 |
| Roof Pitches | 12/12 Primary, 8/12 6/12 Secondary |
| Foundation Wall Height | 9' |
| Main Wall Height | 9' |
| Second Wall Height | 8' |

Plan Description

This 1.5-story plan defines Modern Farmhouse style with its mixture of exterior textures including board and batten siding, white brick, and metal roofing. Inside, immediate impressions are made by a soaring wood-beamed cathedral ceiling in the great room. An abundance of windows floods the great room with natural light. The kitchen, with an expansive work island, is open to the dining area. Away from the living areas, the main floor's master suite features a large walk-in closet, and his and her vanities in the bath. Upstairs, bedroom 2 and 3 share a Jack-n-Jill bath while bedroom 4 has its own private bathroom. Back on the main level, the generously proportioned 3-car garage includes ample space. It accesses the home through a mudroom, complete with bench, lockers and a coat closet.